

Dated: 21-12-2020 22:04

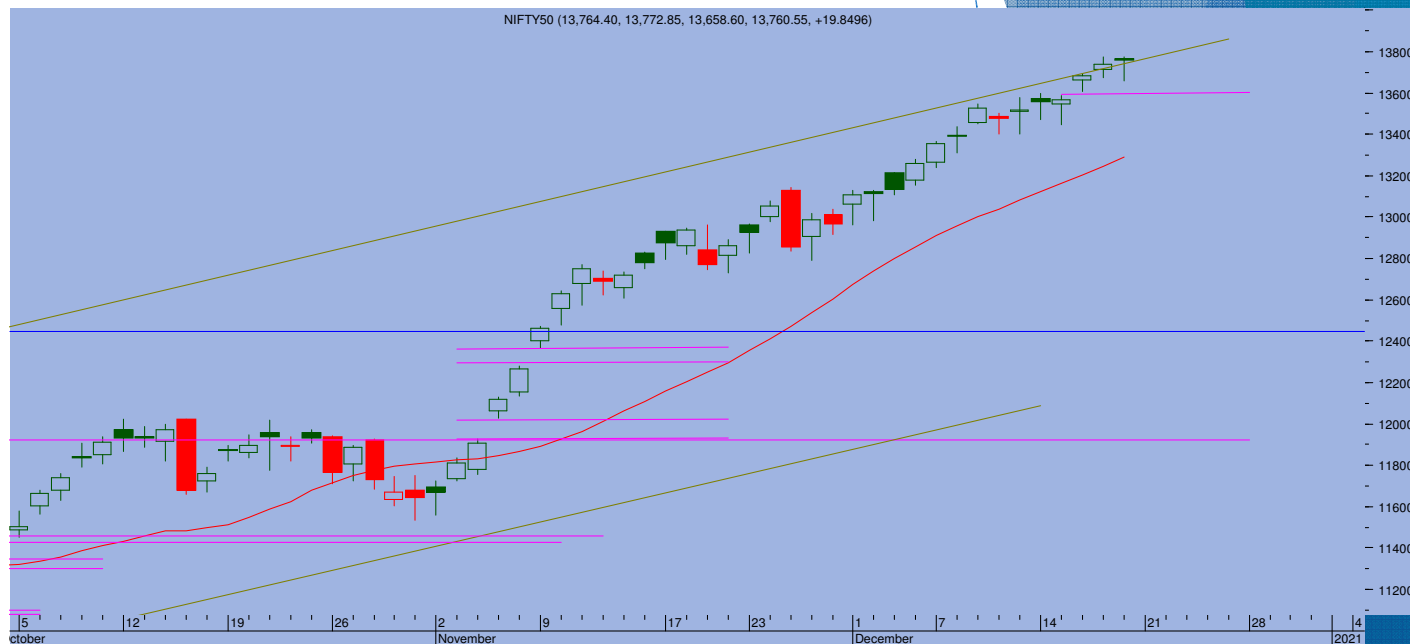
Top Trade

NIFTY - 13328

Sup 13270-13150 Res 13400-13460

BANKNIFTY - 29456

Sup 29300-29000 Res 29750-30000



- More mutant Corona Virus strain found in UK sparked a world wide correction. Nifty at one point of time collapsed to a low 13131 but managed to recover and end at 13328, losing 432 points
- The signs were there, the levels were there, market was only looking for a trigger to correct. After an extended rally and Friday's Hanging Man pattern formation, markets had opened to some weakness and towards later half collapsed to wipe off major part of the gains made over last few days. This brings in a much needed corrective action. However, after this much fall, it seems that markets could find its feet around current lows and adopt a steady approach for next few days.
- 13400-13460 acts as near term resistance on the immediate upside. On the lower side, 13270-13150 act as strong support levels.

TRADE WHIZARD4504

Scrip	B/S	Rate	S/L	Tgt1	Tgt2	Remarks
Reliance Ind1 fut	Buy	1940	1920	1965	1980	1 Day
Hdfc Bank1 Fut	Sell	1380	1395	1360	1355	1 Day

PIVOT POINTS

Security Name	CMP	Pivot	S1	S2	S3	R1	R2	R3	OI %
*BANKNIFTY 1	29418	29746	28894	28370	27518	30270	31122	31646	15.70
*NIFTY1 1	13330	13423	13062	12794	12433	13691	14053	14320	-12.78
AXISBANK 1	583	589	569	555	535	603	623	636	-2.61
BHARTIARTL 1	490	495	478	465	448	508	525	537	-5.55
BPCL 1	367	373	352	337	317	388	408	423	-4.36
HDFC 1	2414	2424	2368	2321	2264	2471	2528	2575	-1.20
HDFC BANK - 1	1377	1391	1357	1337	1303	1411	1445	1464	-0.89
HPCL 1	209	213	202	194	184	220	231	238	-7.78
ICICI BANK - 1	495	500	484	474	459	510	526	536	-3.83
INDUSINDBK 1	843	856	804	764	712	895	947	987	-9.51
INFY1 1	1178	1181	1150	1122	1092	1209	1239	1267	-6.98
KOTAKBANK 1	1917	1927	1896	1875	1845	1948	1978	1999	-4.03
LT 1	1237	1244	1149	1060	965	1333	1428	1517	3.94
MARUTI - 1	7379	7430	7247	7115	6931	7562	7745	7877	-3.30
REL INDS 1	1940	1940	1855	1771	1686	2025	2109	2194	-10.00
SBI 1	255	259	248	241	231	266	276	283	-0.39
TATASTEEL 1	597	605	580	564	539	621	646	662	-2.01
TCS - 1	2824	2835	2778	2733	2676	2880	2937	2983	-8.07



Prepared by:
Nirav Vakharia, Head Research
Share India Securities Limited
14, Dayanand Vihar, 1 Kakardooma Metro Station, Delhi-110092
Email: research@shareindia.co.in
SEBI Research Analyst Reg no. INH100005011

Disclosure:

We, research team at Share India Securities Ltd. (SISL), authors and the names subscribed to this report, hereby certify that all of the views expressed in this research report accurately reflect our views about the subject issuer(s) or securities. SISL has no material adverse disciplinary history as on the date of publication of this report. We also certify that no part of our compensation was, is, or will be directly or indirectly related to the specific recommendation(s) or view(s) in this report.

Research Analyst or his/her relative or SISL may have any financial interest in the subject company. Also Research Analyst or his relative or SISL or its Associate may have beneficial ownership of 1% or more in the subject company at the end of the immediately preceding the date of publication of the Research Report. Further Research Analyst or his relative or SISL or its associate does not have any material conflict of interest.

SISL is a SEBI Registered Research Analyst having registration no. INH100005011.

Disclaimer:

This report has been prepared by SISL and is meant for sole use by the recipient and not for circulation. The information and opinions contained herein have been compiled or arrived at, based upon information obtained in good faith from sources believed to be reliable. Such information has not been independently verified and no guaranty, representation of warranty, express or implied, is made as to its accuracy, completeness or correctness. All such information and opinions are subject to change without notice. This document is for information purposes only. Descriptions of any company or companies or their securities mentioned herein are not intended to be complete and this document is not, and should not be construed as an offer or solicitation of an offer, to buy or sell any securities or other financial instruments.

This report is not directed to, or intended for display, downloading, printing, reproducing or for distribution to or use by, any person or entity who is a citizen or resident or located in any locality, state, country or other jurisdiction where such distribution, publication, reproduction, availability or use would be contrary to law or regulation or what would subject SISL or its affiliates to any registration or licensing requirement within such jurisdiction.

If this report is inadvertently sent or has reached any individual in such country, especially, USA, the same may be ignored and brought to the attention of the sender. This document may not be reproduced, distributed or published for any purposes without prior written approval of SISL.

Foreign currencies denominated securities, wherever mentioned, are subject to exchange rate fluctuations, which could have an adverse effect on their value or price, or the income derived from them. In addition, investors in securities such as ADRs, the values of which are influenced by foreign currencies effectively assume currency risk.

It should not be considered to be taken as an offer to sell or a solicitation to buy any security. SISL may from time to time solicit from, or perform broking, or other services for, any company mentioned in this mail and/or its attachments.

SISL and its affiliated company(ies), their directors and employees may; (a) from time to time, have a long or short position in, and buy or sell the securities of the company(ies) mentioned herein or (b) be engaged in any other transaction involving such securities and earn brokerage or other compensation or act as a market maker in the financial instruments of the company(ies) discussed herein or act as an advisor or lender/borrower to such company(ies) or may have any other potential conflict of interests with respect to any recommendation and other related information and opinions.

SISL, its directors, analysts or employees do not take any responsibility, financial or otherwise, of the losses or the damages sustained due to the investments made or any action taken on basis of this report, including but not restricted to, fluctuation in the prices of shares and bonds, changes in the currency rates, diminution in the NAVs, reduction in the dividend or income, etc.

SISL and other group companies, its directors, associates, employees may have various positions in any of the stocks, securities and financial instruments dealt in the report, or may make sell or purchase or other deals in these securities from time to time or may deal in other securities of the companies / organizations described in this report.

SISL or its associates might have managed or co-managed public offering of securities for the subject company or might have been mandated by the subject company for any other assignment in the past twelvemonths.

SISL or its associates might have received any compensation from the companies mentioned in the report during the period preceding twelve months from t date of this report for services in respect of managing orco-managing public offerings, corporate finance, investment banking or merchant banking, brokerage services or other advisory service in a merger or specific transaction in the normal course of business.

SISL or its analysts did not receive any compensation or other benefits from the companies mentioned in the report or third party in connection with preparation of the research report. Accordingly, neither SISL nor Research Analysts have any material conflict of interest at the time of publication of this report. Compensation of our Research Analysts is not based on any specific merchant banking, investment banking or brokerage service transactions. SISL may have issued other reports that are inconsistent with and reach different conclusion from the information presented in this report.