

Dated: 17-12-2020 21:17

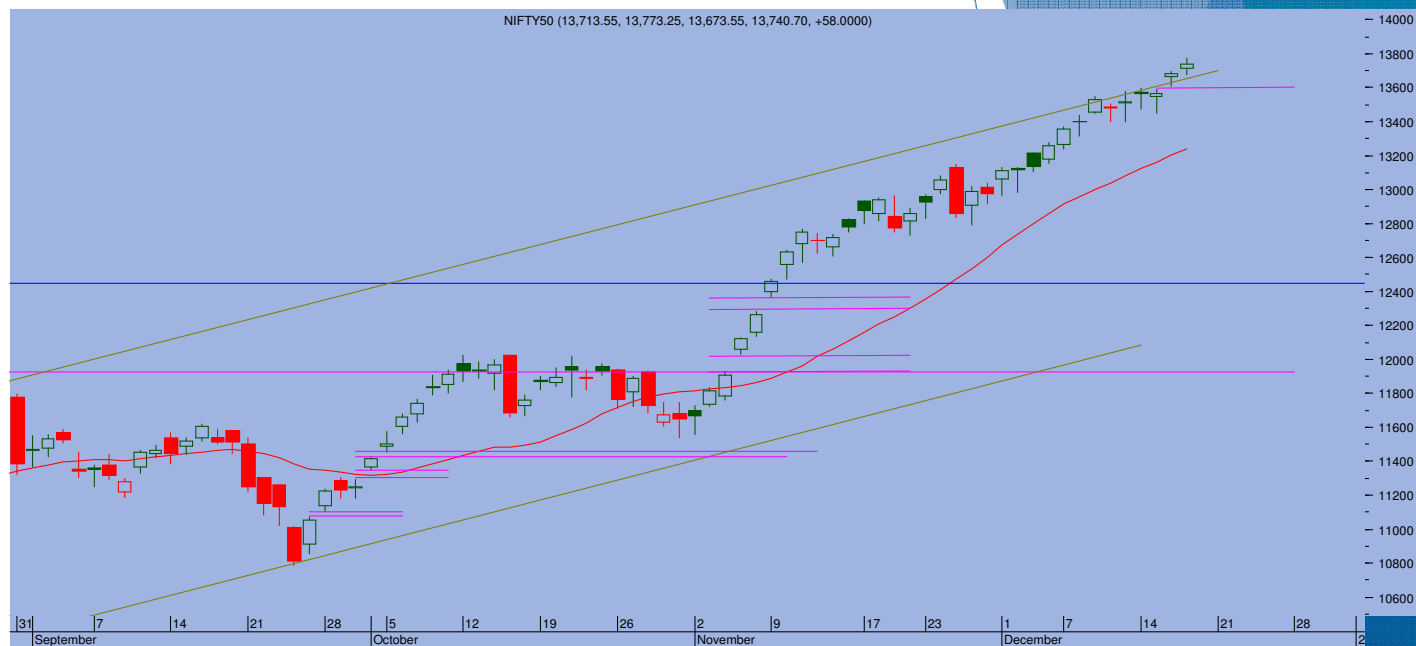
Top Trade

NIFTY - 13740

Sup 13670-13600 Res 13780-13840

BANKNIFTY - 30847

Sup 30590-30350 Res 30950-31200



- Markets are in a sweet spot as strong buying momentum keeps pushing higher. Nifty gained another 58 points to end at 13740 after testing a high of 13773
- Out of last 11 trading days, Nifty has hit high for 10 days gaining 660 points in this period only. Overall, last 15 days, it has gained 915 points
- For past 7-8 trading days, Nifty has glided along the upper trend channel line. At today's high, the current intermediate trend starting from 10790 gained 2983 points, which is almost equal to the rally of 2988 points seen from 8806 in May to 11794 in Aug, **The Rule of Equality is an important indicator in Technical Analysis. It seems that index has hit a crucial level and could face some hurdles over next few days.**
- Today's low of 13673 and yesterday's gap threshold of 13606-13589 are crucial support levels. Violation of these twin supports would indicate a minor correction setting in which can pull the index lower. On the higher side, it seems that going past 13800-13850 range could be difficult for now.

TRADE WHIZARD4504

Scrip	B/S	Rate	S/L	Tgt1	Tgt2	Remarks
Axis Bank1 Fut	Sell	604	610	595	590	1 Day
HDFC Life1 Fut	Buy	655	648	664	668	1 Day
Divis Lab1 Fut	Buy	3830	3800	3870	3890	1 day

PIVOT POINTS

Security Name	CMP	Pivot	S1	S2	S3	R1	R2	R3	OI %
*BANKNIFTY 1	30844	30832	30665	30486	30319	31011	31177	31357	10.71
*NIFTY1 1	13754	13745	13696	13638	13588	13804	13853	13912	3.97
AXISBANK 1	607	608	603	599	594	612	617	621	-0.14
BHARTIARTL 1	516	517	512	508	502	521	527	531	2.11
BPCL 1	396	398	393	389	384	402	407	411	1.55
HDFC 1	2496	2478	2444	2392	2357	2530	2564	2616	6.25
HDFC BANK - 1	1442	1438	1395	1349	1306	1484	1527	1573	2.74
HPCL 1	226	228	223	220	216	231	236	238	0.58
ICICI BANK – 1	512	514	509	506	502	517	521	524	5.04
INDUSINDBK 1	940	936	921	901	886	955	971	990	10.06
INFY1 1	1162	1164	1157	1153	1146	1168	1175	1179	3.72
KOTAKBANK 1	1964	1956	1946	1927	1917	1974	1985	2003	1.40
LT 1	1279	1274	1262	1245	1233	1291	1303	1320	3.55
MARUTI – 1	7706	7734	7625	7543	7434	7816	7925	8007	2.57
REL INDS 1	1992	1996	1979	1966	1949	2009	2026	2038	1.68
SBI 1	268	270	266	264	260	272	276	278	-0.25
TATASTEEL 1	637	640	631	625	617	645	654	660	-1.50
TCS - 1	2842	2833	2817	2792	2775	2858	2874	2899	2.76



Prepared by:
Nirav Vakharia, Head Research
Share India Securities Limited
14, Dayanand Vihar, 1 Kakardooma Metro Station, Delhi-110092
Email: research@shareindia.co.in
SEBI Research Analyst Reg no. INH100005011

Disclosure:

We, research team at Share India Securities Ltd. (SISL), authors and the names subscribed to this report, hereby certify that all of the views expressed in this research report accurately reflect our views about the subject issuer(s) or securities. SISL has no material adverse disciplinary history as on the date of publication of this report. We also certify that no part of our compensation was, is, or will be directly or indirectly related to the specific recommendation(s) or view(s) in this report.

Research Analyst or his/her relative or SISL may have any financial interest in the subject company. Also Research Analyst or his relative or SISL or its Associate may have beneficial ownership of 1% or more in the subject company at the end of the immediately preceding the date of publication of the Research Report. Further Research Analyst or his relative or SISL or its associate does not have any material conflict of interest.

SISL is a SEBI Registered Research Analyst having registration no. INH100005011.

Disclaimer:

This report has been prepared by SISL and is meant for sole use by the recipient and not for circulation. The information and opinions contained herein have been compiled or arrived at, based upon information obtained in good faith from sources believed to be reliable. Such information has not been independently verified and no guaranty, representation of warranty, express or implied, is made as to its accuracy, completeness or correctness. All such information and opinions are subject to change without notice. This document is for information purposes only. Descriptions of any company or companies or their securities mentioned herein are not intended to be complete and this document is not, and should not be construed as an offer or solicitation of an offer, to buy or sell any securities or other financial instruments.

This report is not directed to, or intended for display, downloading, printing, reproducing or for distribution to or use by, any person or entity who is a citizen or resident or located in any locality, state, country or other jurisdiction where such distribution, publication, reproduction, availability or use would be contrary to law or regulation or what would subject SISL or its affiliates to any registration or licensing requirement within such jurisdiction.

If this report is inadvertently sent or has reached any individual in such country, especially, USA, the same may be ignored and brought to the attention of the sender. This document may not be reproduced, distributed or published for any purposes without prior written approval of SISL.

Foreign currencies denominated securities, wherever mentioned, are subject to exchange rate fluctuations, which could have an adverse effect on their value or price, or the income derived from them. In addition, investors in securities such as ADRs, the values of which are influenced by foreign currencies effectively assume currency risk.

It should not be considered to be taken as an offer to sell or a solicitation to buy any security. SISL may from time to time solicit from, or perform broking, or other services for, any company mentioned in this mail and/or its attachments.

SISL and its affiliated company(ies), their directors and employees may; (a) from time to time, have a long or short position in, and buy or sell the securities of the company(ies) mentioned herein or (b) be engaged in any other transaction involving such securities and earn brokerage or other compensation or act as a market maker in the financial instruments of the company(ies) discussed herein or act as an advisor or lender/borrower to such company(ies) or may have any other potential conflict of interests with respect to any recommendation and other related information and opinions.

SISL, its directors, analysts or employees do not take any responsibility, financial or otherwise, of the losses or the damages sustained due to the investments made or any action taken on basis of this report, including but not restricted to, fluctuation in the prices of shares and bonds, changes in the currency rates, diminution in the NAVs, reduction in the dividend or income, etc.

SISL and other group companies, its directors, associates, employees may have various positions in any of the stocks, securities and financial instruments dealt in the report, or may make sell or purchase or other deals in these securities from time to time or may deal in other securities of the companies / organizations described in this report.

SISL or its associates might have managed or co-managed public offering of securities for the subject company or might have been mandated by the subject company for any other assignment in the past twelvemonths.

SISL or its associates might have received any compensation from the companies mentioned in the report during the period preceding twelve months from t date of this report for services in respect of managing or co-managing public offerings, corporate finance, investment banking or merchant banking, brokerage services or other advisory service in a merger or specific transaction in the normal course of business.

SISL or its analysts did not receive any compensation or other benefits from the companies mentioned in the report or third party in connection with preparation of the research report. Accordingly, neither SISL nor Research Analysts have any material conflict of interest at the time of publication of this report. Compensation of our Research Analysts is not based on any specific merchant banking, investment banking or brokerage service transactions. SISL may have issued other reports that are inconsistent with and reach different conclusion from the information presented in this report.