

Daily

# MARKET STRATEGIES



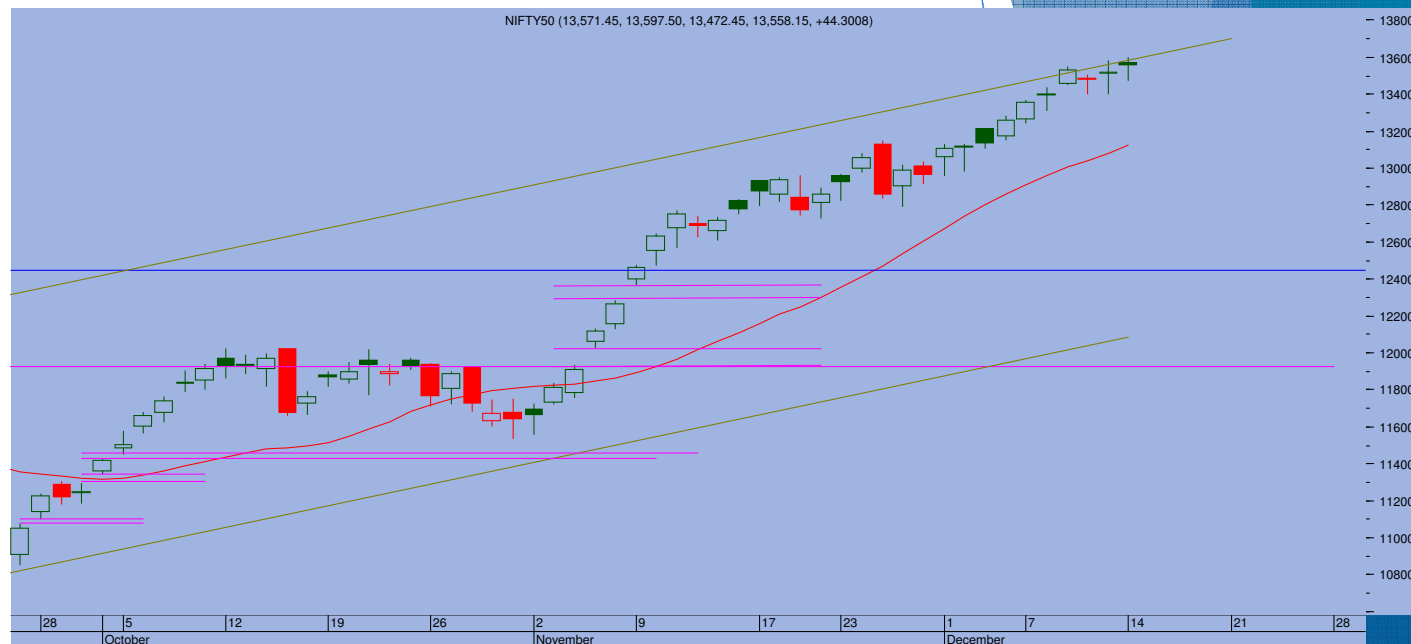
## Top Trade

### NIFTY - 13567

Sup 13470-13400 Res 13600-1360

### BANKNIFTY - 30691

Sup 30200-30000 Res 30800-31000



- For the fourth day in a row, Nifty behaved in a similar way, dropping early on and then recovering to end near the day high. Nifty ended at 13567, gaining 10 points
- So, the fourth spinning top candle was formed as Nifty ended near the upper range, rebounding off the day low. 13400-13600 has emerged as trading range for now.
- Unless, the index violates 13400 decisively on the lower side, the positive strength would continue to drive the index. Above 13600, the index can even target 13800
- Below 13400, the index can drop towards 13300-13240 range.

### TRADE WHIZARD4504

Scrip	B/S	Rate	S/L	Tgt1	Tgt2	Remarks
HDFC Bank1 Fut	Buy	1392	1375	1410	1420	1 Day
Jindal Steel1 Fut	Buy	275	271	280	284	1 Day
Avadh Sugar	Buy	234	220	255	265	Delivery
Aptech	Buy	138	130	150	155	Delivery

### PIVOT POINTS

Security Name	CMP	Pivot	S1	S2	S3	R1	R2	R3	OI %
*BANKNIFTY 1	30707	30610	30440	30174	30004	30877	31047	31313	-10.51
*NIFTY1 1	13585	13547	13492	13399	13343	13640	13696	13789	-0.70
AXISBANK 1	609	610	603	596	589	617	624	631	0.53
BHARTIARTL 1	506	504	501	496	493	509	513	517	-0.55
BPCL 1	400	403	395	390	382	408	415	420	3.73
HDFC 1	2353	2334	2308	2262	2236	2379	2405	2451	-1.87
HDFC BANK - 1	1393	1386	1376	1360	1350	1402	1412	1429	-0.48
HPCL 1	227	227	224	222	219	230	233	236	-0.94
ICICI BANK – 1	518	519	513	508	502	524	530	536	-1.58
INDUSINDBK 1	930	924	915	900	891	940	949	964	-0.78
INFY1 1	1159	1160	1154	1149	1143	1165	1171	1176	2.32
KOTAKBANK 1	1946	1939	1922	1898	1881	1963	1980	2005	-1.53
LT 1	1247	1240	1226	1204	1190	1262	1276	1298	2.92
MARUTI – 1	7783	7748	7698	7614	7564	7833	7882	7967	-0.82
REL INDS 1	1977	1978	1963	1948	1933	1992	2007	2022	0.74
SBI 1	272	272	269	266	264	274	277	280	-0.51
TATASTEEL 1	637	631	624	612	605	644	650	663	0.75
TCS - 1	2774	2779	2763	2752	2736	2790	2806	2817	5.26



Prepared by:  
Nirav Vakharia, Head Research  
Share India Securities Limited  
14, Dayanand Vihar, 1 Kakardooma Metro Station, Delhi-110092  
Email: [research@shareindia.co.in](mailto:research@shareindia.co.in)  
SEBI Research Analyst Reg no. INH100005011

**Disclosure:**

We, research team at Share India Securities Ltd. (SISL), authors and the names subscribed to this report, hereby certify that all of the views expressed in this research report accurately reflect our views about the subject issuer(s) or securities. SISL has no material adverse disciplinary history as on the date of publication of this report. We also certify that no part of our compensation was, is, or will be directly or indirectly related to the specific recommendation(s) or view(s) in this report.

Research Analyst or his/her relative or SISL may have any financial interest in the subject company. Also Research Analyst or his relative or SISL or its Associate may have beneficial ownership of 1% or more in the subject company at the end of the immediately preceding the date of publication of the Research Report. Further Research Analyst or his relative or SISL or its associate does not have any material conflict of interest.

SISL is a SEBI Registered Research Analyst having registration no. INH100005011.

**Disclaimer:**

This report has been prepared by SISL and is meant for sole use by the recipient and not for circulation. The information and opinions contained herein have been compiled or arrived at, based upon information obtained in good faith from sources believed to be reliable. Such information has not been independently verified and no guaranty, representation of warranty, express or implied, is made as to its accuracy, completeness or correctness. All such information and opinions are subject to change without notice. This document is for information purposes only. Descriptions of any company or companies or their securities mentioned herein are not intended to be complete and this document is not, and should not be construed as an offer or solicitation of an offer, to buy or sell any securities or other financial instruments.

This report is not directed to, or intended for display, downloading, printing, reproducing or for distribution to or use by, any person or entity who is a citizen or resident or located in any locality, state, country or other jurisdiction where such distribution, publication, reproduction, availability or use would be contrary to law or regulation or what would subject SISL or its affiliates to any registration or licensing requirement within such jurisdiction.

If this report is inadvertently sent or has reached any individual in such country, especially, USA, the same may be ignored and brought to the attention of the sender. This document may not be reproduced, distributed or published for any purposes without prior written approval of SISL.

Foreign currencies denominated securities, wherever mentioned, are subject to exchange rate fluctuations, which could have an adverse effect on their value or price, or the income derived from them. In addition, investors in securities such as ADRs, the values of which are influenced by foreign currencies effectively assume currency risk.

It should not be considered to be taken as an offer to sell or a solicitation to buy any security. SISL may from time to time solicit from, or perform broking, or other services for, any company mentioned in this mail and/or its attachments.

SISL and its affiliated company(ies), their directors and employees may; (a) from time to time, have a long or short position in, and buy or sell the securities of the company(ies) mentioned herein or (b) be engaged in any other transaction involving such securities and earn brokerage or other compensation or act as a market maker in the financial instruments of the company(ies) discussed herein or act as an advisor or lender/borrower to such company(ies) or may have any other potential conflict of interests with respect to any recommendation and other related information and opinions.

SISL, its directors, analysts or employees do not take any responsibility, financial or otherwise, of the losses or the damages sustained due to the investments made or any action taken on basis of this report, including but not restricted to, fluctuation in the prices of shares and bonds, changes in the currency rates, diminution in the NAVs, reduction in the dividend or income, etc.

SISL and other group companies, its directors, associates, employees may have various positions in any of the stocks, securities and financial instruments dealt in the report, or may make sell or purchase or other deals in these securities from time to time or may deal in other securities of the companies / organizations described in this report.

SISL or its associates might have managed or co-managed public offering of securities for the subject company or might have been mandated by the subject company for any other assignment in the past twelvemonths.

SISL or its associates might have received any compensation from the companies mentioned in the report during the period preceding twelve months from t date of this report for services in respect of managing orco-managing public offerings, corporate finance, investment banking or merchant banking, brokerage services or other advisory service in a merger or specific transaction in the normal course of business.

SISL or its analysts did not receive any compensation or other benefits from the companies mentioned in the report or third party in connection with preparation of the research report. Accordingly, neither SISL nor Research Analysts have any material conflict of interest at the time of publication of this report. Compensation of our Research Analysts is not based on any specific merchant banking, investment banking or brokerage service transactions. SISL may have issued other reports that are inconsistent with and reach different conclusion from the information presented in this report.