

Dated: 13-12-2020 18:09

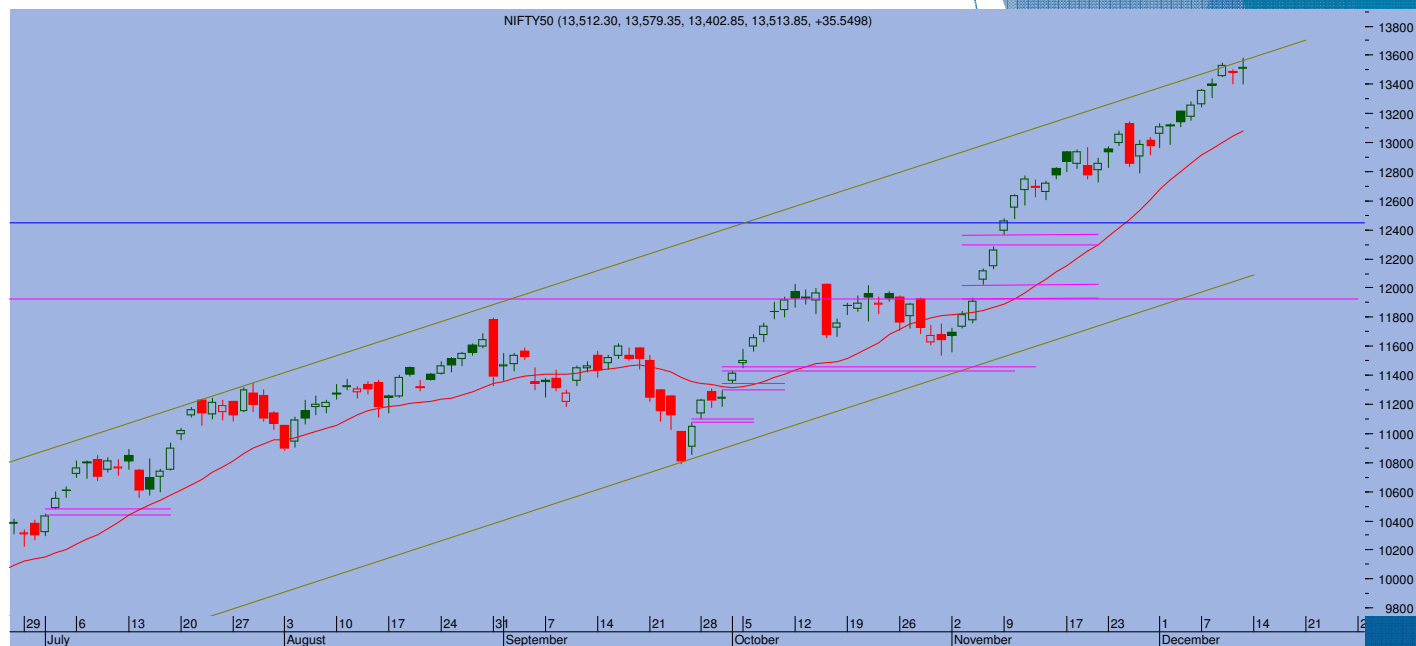
## Top Trade

### NIFTY - 13513

Sup 13400-13310 Res 13550-13600

### BANKNIFTY - 30604

Sup 30200-30000 Res 30800-31000



- As the underlying momentum is very strong, the minor intraday corrections gets bought into resulting in sustainability of the Nifty at these elevated levels for last few days despite some concerns of overbought situation. Nifty ended at 13513, gaining 35 points
- For the second consecutive day, a Spinning Top candle was formed reflecting some pause following rally of over 789 points. As the index hits the overhead resistance of upper channel line at 13500-13600 range, some profit booking has emerged but its not as sharp to cause any big dent.
- Decisive violation of 13400 could be a trigger for further down move towards 13300-13200 range.
- On the higher side, 13548-13600 acts as near term resistance levels. The momentum could still help the index to glide higher along the upper channel line levels and move towards 13800 range

### TRADE WHIZARD4504

Scrip	B/S	Rate	S/L	Tgt1	Tgt2	Remarks
Apollo Tyre1 Fut	Buy	193	190	197	199	1 Day
Marico1 Fut	Buy	416	410	425	430	1 Day
JSW Steel1 Ft	BUy	360	356	365	368	1 Day

### PIVOT POINTS

Security Name	CMP	Pivot	S1	S2	S3	R1	R2	R3	OI %
*BANKNIFTY 1	30609	30604	30343	30076	29815	30871	31132	31399	0.55
*NIFTY1 1	13518	13511	13422	13326	13238	13607	13695	13791	2.23
AXISBANK 1	615	619	604	594	580	629	644	654	4.97
BHARTIARTL 1	505	504	499	492	487	510	516	522	-0.86
BPCL 1	398	400	391	384	375	407	416	423	4.92
HDFC 1	2301	2301	2279	2256	2234	2323	2346	2368	-0.68
HDFC BANK - 1	1386	1387	1376	1365	1354	1397	1409	1419	2.46
HPCL 1	218	219	214	210	205	223	228	232	2.18
ICICI BANK - 1	516	514	510	503	499	520	524	531	-0.26
INDUSINDBK 1	925	926	916	907	897	935	945	954	-0.26
INFY1 1	1164	1165	1156	1147	1138	1174	1183	1192	0.41
KOTAKBANK 1	1914	1910	1895	1876	1860	1930	1945	1964	0.43
LT 1	1196	1200	1180	1164	1144	1215	1235	1251	0.98
MARUTI - 1	7740	7755	7692	7645	7583	7802	7864	7912	-1.70
REL INDS 1	2008	2011	1973	1939	1902	2045	2083	2117	-1.44
SBI 1	273	274	270	268	264	276	280	282	0.78
TATASTEEL 1	624	623	617	611	605	630	635	642	2.54
TCS - 1	2789	2793	2770	2751	2729	2812	2834	2853	-3.14



Prepared by:  
Nirav Vakharia, Head Research  
Share India Securities Limited  
14, Dayanand Vihar, 1 Kakardooma Metro Station, Delhi-110092  
Email: [research@shareindia.co.in](mailto:research@shareindia.co.in)  
SEBI Research Analyst Reg no. INH100005011

**Disclosure:**

We, research team at Share India Securities Ltd. (SISL), authors and the names subscribed to this report, hereby certify that all of the views expressed in this research report accurately reflect our views about the subject issuer(s) or securities. SISL has no material adverse disciplinary history as on the date of publication of this report. We also certify that no part of our compensation was, is, or will be directly or indirectly related to the specific recommendation(s) or view(s) in this report.

Research Analyst or his/her relative or SISL may have any financial interest in the subject company. Also Research Analyst or his relative or SISL or its Associate may have beneficial ownership of 1% or more in the subject company at the end of the immediately preceding the date of publication of the Research Report. Further Research Analyst or his relative or SISL or its associate does not have any material conflict of interest.

SISL is a SEBI Registered Research Analyst having registration no. INH100005011.

**Disclaimer:**

This report has been prepared by SISL and is meant for sole use by the recipient and not for circulation. The information and opinions contained herein have been compiled or arrived at, based upon information obtained in good faith from sources believed to be reliable. Such information has not been independently verified and no guaranty, representation of warranty, express or implied, is made as to its accuracy, completeness or correctness. All such information and opinions are subject to change without notice. This document is for information purposes only. Descriptions of any company or companies or their securities mentioned herein are not intended to be complete and this document is not, and should not be construed as an offer or solicitation of an offer, to buy or sell any securities or other financial instruments.

This report is not directed to, or intended for display, downloading, printing, reproducing or for distribution to or use by, any person or entity who is a citizen or resident or located in any locality, state, country or other jurisdiction where such distribution, publication, reproduction, availability or use would be contrary to law or regulation or what would subject SISL or its affiliates to any registration or licensing requirement within such jurisdiction.

If this report is inadvertently sent or has reached any individual in such country, especially, USA, the same may be ignored and brought to the attention of the sender. This document may not be reproduced, distributed or published for any purposes without prior written approval of SISL.

Foreign currencies denominated securities, wherever mentioned, are subject to exchange rate fluctuations, which could have an adverse effect on their value or price, or the income derived from them. In addition, investors in securities such as ADRs, the values of which are influenced by foreign currencies effectively assume currency risk.

It should not be considered to be taken as an offer to sell or a solicitation to buy any security. SISL may from time to time solicit from, or perform broking, or other services for, any company mentioned in this mail and/or its attachments.

SISL and its affiliated company(ies), their directors and employees may; (a) from time to time, have a long or short position in, and buy or sell the securities of the company(ies) mentioned herein or (b) be engaged in any other transaction involving such securities and earn brokerage or other compensation or act as a market maker in the financial instruments of the company(ies) discussed herein or act as an advisor or lender/borrower to such company(ies) or may have any other potential conflict of interests with respect to any recommendation and other related information and opinions.

SISL, its directors, analysts or employees do not take any responsibility, financial or otherwise, of the losses or the damages sustained due to the investments made or any action taken on basis of this report, including but not restricted to, fluctuation in the prices of shares and bonds, changes in the currency rates, diminution in the NAVs, reduction in the dividend or income, etc.

SISL and other group companies, its directors, associates, employees may have various positions in any of the stocks, securities and financial instruments dealt in the report, or may make sell or purchase or other deals in these securities from time to time or may deal in other securities of the companies / organizations described in this report.

SISL or its associates might have managed or co-managed public offering of securities for the subject company or might have been mandated by the subject company for any other assignment in the past twelvemonths.

SISL or its associates might have received any compensation from the companies mentioned in the report during the period preceding twelve months from t date of this report for services in respect of managing orco-managing public offerings, corporate finance, investment banking or merchant banking, brokerage services or other advisory service in a merger or specific transaction in the normal course of business.

SISL or its analysts did not receive any compensation or other benefits from the companies mentioned in the report or third party in connection with preparation of the research report. Accordingly, neither SISL nor Research Analysts have any material conflict of interest at the time of publication of this report. Compensation of our Research Analysts is not based on any specific merchant banking, investment banking or brokerage service transactions. SISL may have issued other reports that are inconsistent with and reach different conclusion from the information presented in this report.