

Dated: 07-12-2020 21:07

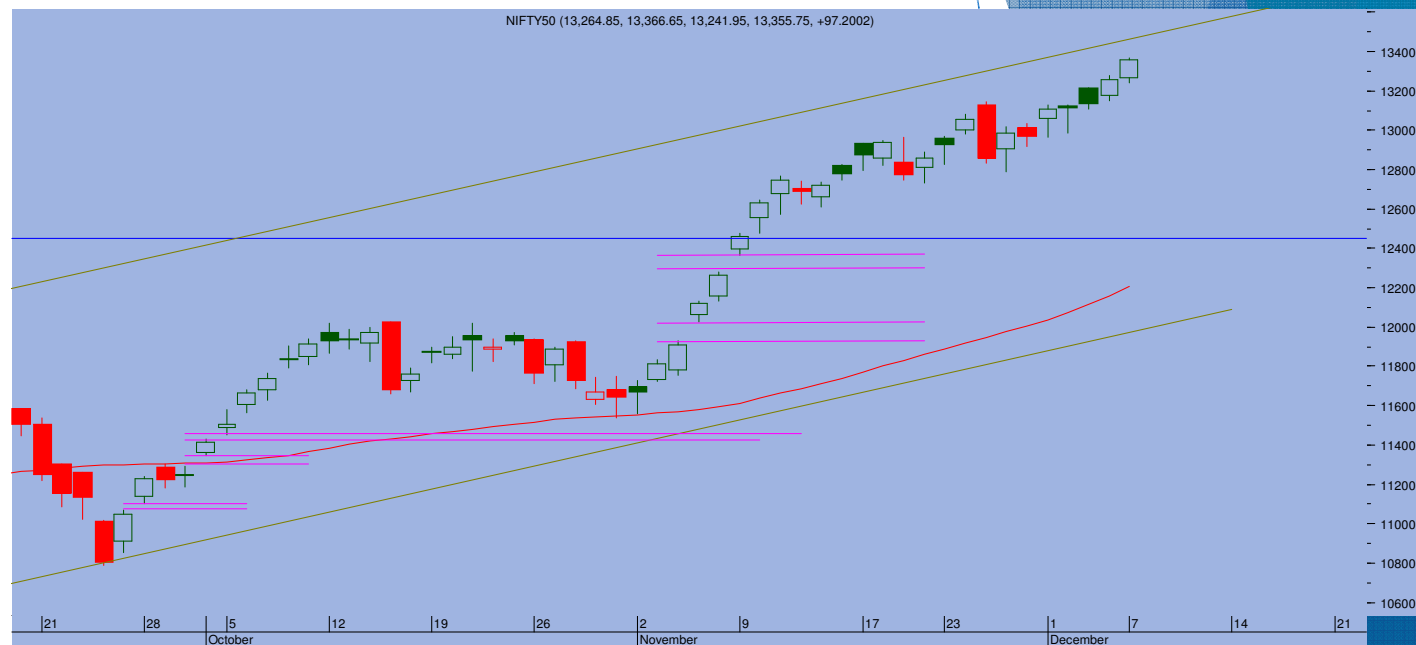
Top Trade

NIFTY - 13355

Sup 13240-13150 Res 13400-13500

BANKNIFTY - 30211

Sup 29900-29560 Res 30355-30550



- As FII's continue to pour huge amount of money in money into Indian Equities, markets surge higher and higher. Nifty climbed 97 points to end at 13355
- Notwithstanding minor negative trend in some of the global peers, India stocks across the board witnessed heavy buying activity
- It looks like that the index may move further higher and 13400-13500 levels on the higher side. Over last five weeks, Nifty has seen a one way rise of over 1830 points, making it susceptible to minor bouts of profit booking. Even a minor incident can trigger such move. Hence one needs to stay cautious and adopt a selective approach. The overhead trend channel line acts as crucial resistance.
- Today's low of 13240 is immediate support. Violation of previous day low can be a first sign of minor consolidation taking place. 131145 is strong support.

TRADE WHIZARD4504

Scrip	B/S	Rate	S/L	Tgt1	Tgt2	Remarks
Amara Raja Bat1 Fut	Buy	912	902	925	930	1 Day
Bharti Airtel1 Fut	Buy	510	504	518	522	1 Day
IOC1 Fut	Buy	92	90	95	96	1 Day
Deepak Fert	Buy	160	148	175	180	Delivey

PIVOT POINTS

Security Name	CMP	Pivot	S1	S2	S3	R1	R2	R3	OI %
*BANKNIFTY 1	30291	30252	30060	29829	29637	30483	30675	30906	-1.39
*NIFTY1 1	13388	13350	13303	13218	13171	13435	13483	13567	-2.40
AXISBANK 1	621	621	615	609	603	627	633	639	0.81
BHARTIARTL 1	510	506	501	491	486	516	521	531	-0.37
BPCL 1	397	399	391	385	377	405	413	419	4.38
HDFC 1	2309	2285	2255	2200	2170	2339	2369	2423	-3.15
HDFC BANK - 1	1380	1377	1368	1356	1347	1389	1398	1410	4.74
HPCL 1	218	218	215	213	210	221	224	226	-0.39
ICICI BANK - 1	511	511	506	500	495	517	522	527	-1.90
INDUSINDBK 1	938	937	917	897	877	958	978	998	1.87
INFY1 1	1150	1150	1141	1133	1123	1159	1168	1177	0.09
KOTAKBANK 1	1824	1828	1804	1784	1759	1849	1873	1894	-0.43
LT 1	1174	1166	1155	1136	1125	1185	1196	1215	0.61
MARUTI - 1	7784	7790	7723	7661	7594	7851	7918	7980	-0.19
REL INDS 1	1964	1961	1950	1936	1924	1975	1987	2001	1.71
SBI 1	270	269	265	260	257	273	277	282	-7.83
TATASTEEL 1	618	621	610	601	590	629	640	649	-1.56
TCS - 1	2749	2740	2726	2703	2688	2764	2778	2802	3.16



Prepared by:
Nirav Vakharia, Head Research
Share India Securities Limited
14, Dayanand Vihar, 1 Kakardooma Metro Station, Delhi-110092
Email: research@shareindia.co.in
SEBI Research Analyst Reg no. INH100005011

Disclosure:

We, research team at Share India Securities Ltd. (SISL), authors and the names subscribed to this report, hereby certify that all of the views expressed in this research report accurately reflect our views about the subject issuer(s) or securities. SISL has no material adverse disciplinary history as on the date of publication of this report. We also certify that no part of our compensation was, is, or will be directly or indirectly related to the specific recommendation(s) or view(s) in this report.

Research Analyst or his/her relative or SISL may have any financial interest in the subject company. Also Research Analyst or his relative or SISL or its Associate may have beneficial ownership of 1% or more in the subject company at the end of the immediately preceding the date of publication of the Research Report. Further Research Analyst or his relative or SISL or its associate does not have any material conflict of interest.

SISL is a SEBI Registered Research Analyst having registration no. INH100005011.

Disclaimer:

This report has been prepared by SISL and is meant for sole use by the recipient and not for circulation. The information and opinions contained herein have been compiled or arrived at, based upon information obtained in good faith from sources believed to be reliable. Such information has not been independently verified and no guaranty, representation of warranty, express or implied, is made as to its accuracy, completeness or correctness. All such information and opinions are subject to change without notice. This document is for information purposes only. Descriptions of any company or companies or their securities mentioned herein are not intended to be complete and this document is not, and should not be construed as an offer or solicitation of an offer, to buy or sell any securities or other financial instruments.

This report is not directed to, or intended for display, downloading, printing, reproducing or for distribution to or use by, any person or entity who is a citizen or resident or located in any locality, state, country or other jurisdiction where such distribution, publication, reproduction, availability or use would be contrary to law or regulation or what would subject SISL or its affiliates to any registration or licensing requirement within such jurisdiction.

If this report is inadvertently sent or has reached any individual in such country, especially, USA, the same may be ignored and brought to the attention of the sender. This document may not be reproduced, distributed or published for any purposes without prior written approval of SISL.

Foreign currencies denominated securities, wherever mentioned, are subject to exchange rate fluctuations, which could have an adverse effect on their value or price, or the income derived from them. In addition, investors in securities such as ADRs, the values of which are influenced by foreign currencies effectively assume currency risk.

It should not be considered to be taken as an offer to sell or a solicitation to buy any security. SISL may from time to time solicit from, or perform broking, or other services for, any company mentioned in this mail and/or its attachments.

SISL and its affiliated company(ies), their directors and employees may; (a) from time to time, have a long or short position in, and buy or sell the securities of the company(ies) mentioned herein or (b) be engaged in any other transaction involving such securities and earn brokerage or other compensation or act as a market maker in the financial instruments of the company(ies) discussed herein or act as an advisor or lender/borrower to such company(ies) or may have any other potential conflict of interests with respect to any recommendation and other related information and opinions.

SISL, its directors, analysts or employees do not take any responsibility, financial or otherwise, of the losses or the damages sustained due to the investments made or any action taken on basis of this report, including but not restricted to, fluctuation in the prices of shares and bonds, changes in the currency rates, diminution in the NAVs, reduction in the dividend or income, etc.

SISL and other group companies, its directors, associates, employees may have various positions in any of the stocks, securities and financial instruments dealt in the report, or may make sell or purchase or other deals in these securities from time to time or may deal in other securities of the companies / organizations described in this report.

SISL or its associates might have managed or co-managed public offering of securities for the subject company or might have been mandated by the subject company for any other assignment in the past twelvemonths.

SISL or its associates might have received any compensation from the companies mentioned in the report during the period preceding twelve months from t date of this report for services in respect of managing or co-managing public offerings, corporate finance, investment banking or merchant banking, brokerage services or other advisory service in a merger or specific transaction in the normal course of business.

SISL or its analysts did not receive any compensation or other benefits from the companies mentioned in the report or third party in connection with preparation of the research report. Accordingly, neither SISL nor Research Analysts have any material conflict of interest at the time of publication of this report. Compensation of our Research Analysts is not based on any specific merchant banking, investment banking or brokerage service transactions. SISL may have issued other reports that are inconsistent with and reach different conclusion from the information presented in this report.