

Dated: 01-12-2020 21:23

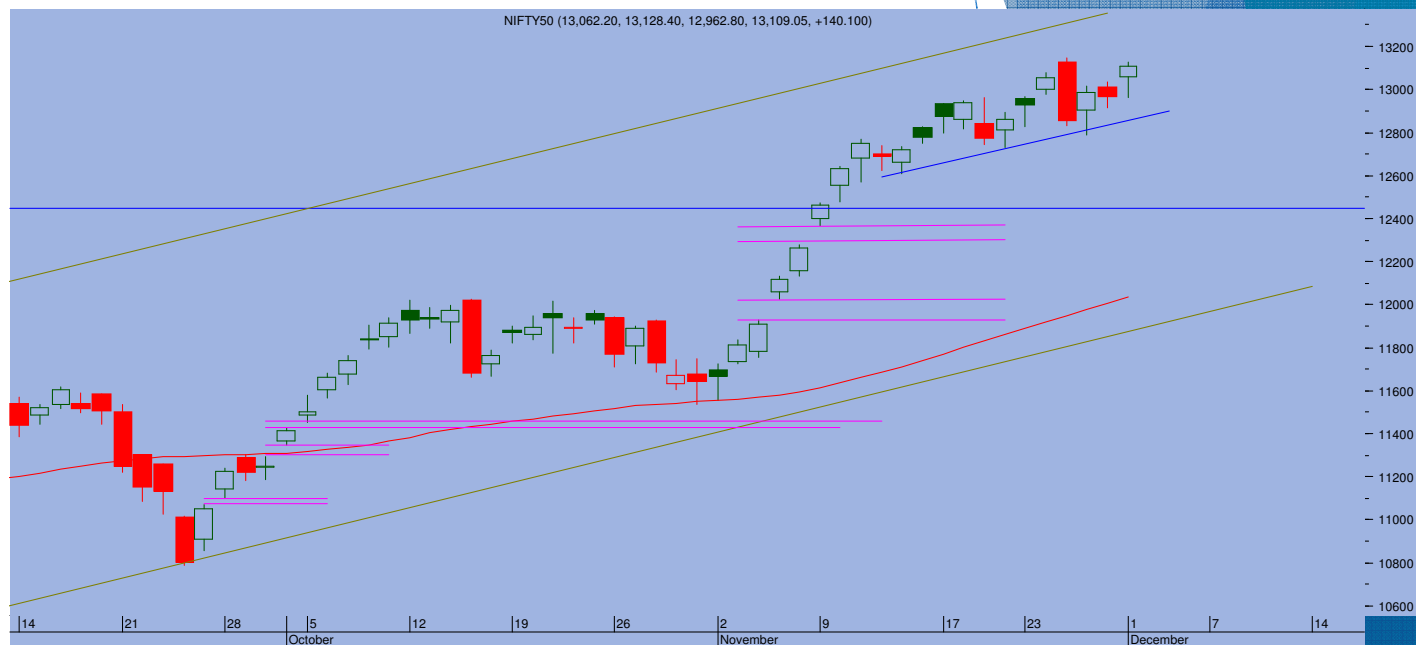
Top Trade

NIFTY - 13109

Sup 13030-12900 Res 13200-13250

BANKNIFTY - 29817

Sup 29650-29500 Res 30200-30500



- Despite a negative tick on the SGX Nifty, markets opened here to the renewed strength led by buying in mid cap space. Later on as large cap too surged higher, leading the Nifty to a gain of 140 points to end at 10109
- Strong gush of liquidity is helping the momentum to remain strong. With newer stocks entering the rally, the positive market breadth continues to ample support. Nifty is now starring at recent high of 13145. If it sustains higher above that, then the efficacy of Engulfing Bearish candle formed last week shall be nullified and would push the index further higher.
- Above 1145, Nifty can target 13200 and then move all the way towards 13400
- On the lower side, 13000 now stands as immediate support level.

TRADE WHIZARD4504

Scrip	B/S	Rate	S/L	Tgt1	Tgt2	Remarks
Auro Pharma1 Fut	Buy	900	890	914	920	1 Day
Bandhan bank1 Fut	Buy	378	374	384	388	1 Day
MCdowell1 Fut	Buy	569	563	575	580	1 Day
NMDC	Buy	100	93	114	120	Delivery

PIVOT POINTS

Security Name	CMP	Pivot	S1	S2	S3	R1	R2	R3	OI %
*BANKNIFTY 1	29892	29803	29615	29339	29151	30079	30267	30544	3.23
*NIFTY1 1	13143	13102	13035	12926	12859	13210	13277	13386	-0.76
AXISBANK 1	607	607	600	592	585	615	622	630	-0.34
BHARTIARTL 1	482	477	468	454	445	491	499	513	-1.75
BPCL 1	381	379	375	369	365	385	389	395	-1.63
HDFC 1	2314	2290	2251	2188	2149	2353	2392	2455	-4.53
HDFC BANK - 1	1437	1439	1429	1421	1412	1447	1456	1464	-2.93
HPCL 1	213	212	210	207	206	214	216	219	-0.95
ICICI BANK – 1	488	485	479	470	463	494	500	509	-0.39
INDUSINDBK 1	901	889	873	845	828	917	934	962	7.45
INFY1 1	1141	1131	1120	1100	1089	1152	1163	1183	-5.88
KOTAKBANK 1	1865	1878	1840	1816	1779	1902	1939	1964	1.09
LT 1	1123	1126	1113	1104	1091	1135	1147	1157	-1.38
MARUTI – 1	7133	7093	7027	6921	6854	7200	7266	7373	-5.49
REL INDS 1	1962	1958	1939	1916	1897	1981	2001	2024	-0.28
SBI 1	249	248	246	243	241	252	254	257	0.57
TATASTEEL 1	587	585	578	570	563	594	601	610	-4.68
TCS - 1	2740	2709	2672	2604	2567	2777	2813	2881	-2.81



Prepared by:
Nirav Vakharia, Head Research
Share India Securities Limited
14, Dayanand Vihar, 1 Kakardooma Metro Station, Delhi-110092
Email: research@shareindia.co.in
SEBI Research Analyst Reg no. INH100005011

Disclosure:

We, research team at Share India Securities Ltd. (SISL), authors and the names subscribed to this report, hereby certify that all of the views expressed in this research report accurately reflect our views about the subject issuer(s) or securities. SISL has no material adverse disciplinary history as on the date of publication of this report. We also certify that no part of our compensation was, is, or will be directly or indirectly related to the specific recommendation(s) or view(s) in this report.

Research Analyst or his/her relative or SISL may have any financial interest in the subject company. Also Research Analyst or his relative or SISL or its Associate may have beneficial ownership of 1% or more in the subject company at the end of the immediately preceding the date of publication of the Research Report. Further Research Analyst or his relative or SISL or its associate does not have any material conflict of interest.

SISL is a SEBI Registered Research Analyst having registration no. INH100005011.

Disclaimer:

This report has been prepared by SISL and is meant for sole use by the recipient and not for circulation. The information and opinions contained herein have been compiled or arrived at, based upon information obtained in good faith from sources believed to be reliable. Such information has not been independently verified and no guaranty, representation of warranty, express or implied, is made as to its accuracy, completeness or correctness. All such information and opinions are subject to change without notice. This document is for information purposes only. Descriptions of any company or companies or their securities mentioned herein are not intended to be complete and this document is not, and should not be construed as an offer or solicitation of an offer, to buy or sell any securities or other financial instruments.

This report is not directed to, or intended for display, downloading, printing, reproducing or for distribution to or use by, any person or entity who is a citizen or resident or located in any locality, state, country or other jurisdiction where such distribution, publication, reproduction, availability or use would be contrary to law or regulation or what would subject SISL or its affiliates to any registration or licensing requirement within such jurisdiction.

If this report is inadvertently sent or has reached any individual in such country, especially, USA, the same may be ignored and brought to the attention of the sender. This document may not be reproduced, distributed or published for any purposes without prior written approval of SISL.

Foreign currencies denominated securities, wherever mentioned, are subject to exchange rate fluctuations, which could have an adverse effect on their value or price, or the income derived from them. In addition, investors in securities such as ADRs, the values of which are influenced by foreign currencies effectively assume currency risk.

It should not be considered to be taken as an offer to sell or a solicitation to buy any security. SISL may from time to time solicit from, or perform broking, or other services for, any company mentioned in this mail and/or its attachments.

SISL and its affiliated company(ies), their directors and employees may; (a) from time to time, have a long or short position in, and buy or sell the securities of the company(ies) mentioned herein or (b) be engaged in any other transaction involving such securities and earn brokerage or other compensation or act as a market maker in the financial instruments of the company(ies) discussed herein or act as an advisor or lender/borrower to such company(ies) or may have any other potential conflict of interests with respect to any recommendation and other related information and opinions.

SISL, its directors, analysts or employees do not take any responsibility, financial or otherwise, of the losses or the damages sustained due to the investments made or any action taken on basis of this report, including but not restricted to, fluctuation in the prices of shares and bonds, changes in the currency rates, diminution in the NAVs, reduction in the dividend or income, etc.

SISL and other group companies, its directors, associates, employees may have various positions in any of the stocks, securities and financial instruments dealt in the report, or may make sell or purchase or other deals in these securities from time to time or may deal in other securities of the companies / organizations described in this report.

SISL or its associates might have managed or co-managed public offering of securities for the subject company or might have been mandated by the subject company for any other assignment in the past twelvemonths.

SISL or its associates might have received any compensation from the companies mentioned in the report during the period preceding twelve months from t date of this report for services in respect of managing or co-managing public offerings, corporate finance, investment banking or merchant banking, brokerage services or other advisory service in a merger or specific transaction in the normal course of business.

SISL or its analysts did not receive any compensation or other benefits from the companies mentioned in the report or third party in connection with preparation of the research report. Accordingly, neither SISL nor Research Analysts have any material conflict of interest at the time of publication of this report. Compensation of our Research Analysts is not based on any specific merchant banking, investment banking or brokerage service transactions. SISL may have issued other reports that are inconsistent with and reach different conclusion from the information presented in this report.