

Dated: 03-11-2020 21:57

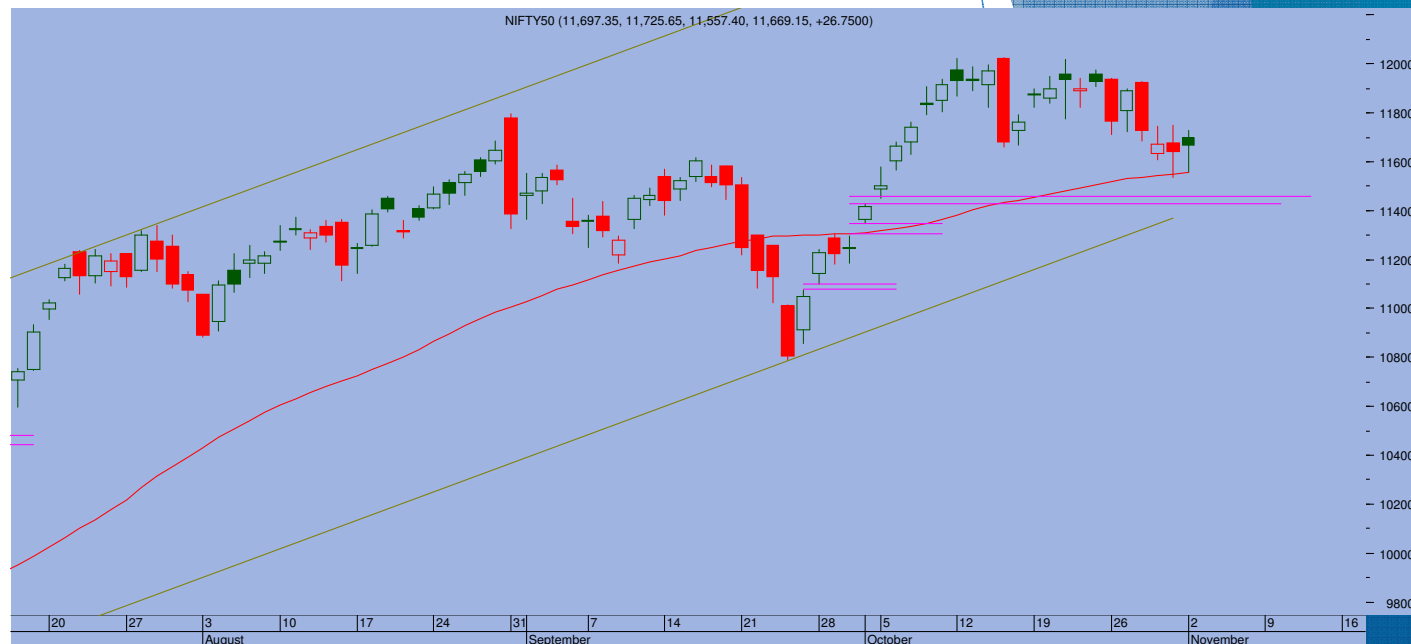
Top Trade

NIFTY - 11813

Buy Nifty S/l blw 11730 Tgt 11880-11950

BANKNIFTY - 25682

Sup 25550-25230 Res 25960-26290



- Once again it was banking sector all the ways helping the Nifty to come out of hibernation and put on solid gains. Nifty ended at 11813, gaining 144 points.
- A big white candle was formed as the index jumped higher to move decisively beyond 11800. Bank Nifty has gained 1782 or 7.5% in just last two days
- The past couple of weeks trading pattern has formed a minor falling channel with resistance at 11880 which the index is expected to test tomorrow. Beyond that the index may well zoom towards 12000 range as well
- 11780-11730 act as important support levels.

TRADE WHIZARD4504

Scrip	B/S	Rate	S/L	Tgt1	Tgt2	Remarks
Lupin1 Fut	Buy	940	930	952	-955	1 Day
Indusind Bank1 Fut	Buy	649	642	658	662	1 Day
TVS Motor1 Fut	Buy	464	458	472	475	1 Day

PIVOT POINTS

Security Name	CMP	Pivot	S1	S2	S3	R1	R2	R3	OI %
*BANKNIFTY 1	25670	25492	25248	24827	24584	25913	26156	26577	4.18
*NIFTY1 1	11825	11800	11756	11687	11643	11869	11913	11982	0.31
AXISBANK 1	535	533	527	520	515	540	545	552	0.54
BHARTIARTL 1	455	455	449	443	437	461	467	473	-0.35
BPCL 1	351	352	348	345	340	355	360	363	-8.26
HDFC 1	2133	2103	2065	1997	1958	2171	2209	2277	0.61
HDFC BANK - 1	1247	1240	1231	1215	1206	1256	1266	1282	-0.90
HPCL 1	186	187	183	180	176	190	194	197	1.55
ICICI BANK - 1	445	439	430	416	407	453	462	476	1.13
INDUSINDBK 1	648	645	637	625	617	657	665	676	-1.25
INFY1 1	1067	1070	1058	1050	1038	1079	1090	1099	-0.81
KOTAKBANK 1	1589	1585	1572	1554	1540	1603	1616	1634	0.30
LT 1	934	930	921	908	900	943	952	964	-2.21
MARUTI - 1	6943	6934	6883	6824	6774	6993	7044	7103	1.15
REL INDS 1	1859	1873	1829	1800	1756	1902	1946	1976	0.77
SBI 1	205	203	200	195	192	208	211	216	-1.03
TATASTEEL 1	409	409	405	402	398	413	417	420	-1.33
TCS - 1	2636	2637	2607	2578	2549	2666	2696	2725	-0.83



Prepared by:
Nirav Vakharia, Head Research
Share India Securities Limited
14, Dayanand Vihar, 1 Kakardooma Metro Station, Delhi-110092
Email: research@shareindia.co.in
SEBI Research Analyst Reg no. INH100005011

Disclosure:

We, research team at Share India Securities Ltd. (SISL), authors and the names subscribed to this report, hereby certify that all of the views expressed in this research report accurately reflect our views about the subject issuer(s) or securities. SISL has no material adverse disciplinary history as on the date of publication of this report. We also certify that no part of our compensation was, is, or will be directly or indirectly related to the specific recommendation(s) or view(s) in this report.

Research Analyst or his/her relative or SISL may have any financial interest in the subject company. Also Research Analyst or his relative or SISL or its Associate may have beneficial ownership of 1% or more in the subject company at the end of the immediately preceding the date of publication of the Research Report. Further Research Analyst or his relative or SISL or its associate does not have any material conflict of interest.

SISL is a SEBI Registered Research Analyst having registration no. INH100005011.

Disclaimer:

This report has been prepared by SISL and is meant for sole use by the recipient and not for circulation. The information and opinions contained herein have been compiled or arrived at, based upon information obtained in good faith from sources believed to be reliable. Such information has not been independently verified and no guaranty, representation of warranty, express or implied, is made as to its accuracy, completeness or correctness. All such information and opinions are subject to change without notice. This document is for information purposes only. Descriptions of any company or companies or their securities mentioned herein are not intended to be complete and this document is not, and should not be construed as an offer or solicitation of an offer, to buy or sell any securities or other financial instruments.

This report is not directed to, or intended for display, downloading, printing, reproducing or for distribution to or use by, any person or entity who is a citizen or resident or located in any locality, state, country or other jurisdiction where such distribution, publication, reproduction, availability or use would be contrary to law or regulation or what would subject SISL or its affiliates to any registration or licensing requirement within such jurisdiction.

If this report is inadvertently sent or has reached any individual in such country, especially, USA, the same may be ignored and brought to the attention of the sender. This document may not be reproduced, distributed or published for any purposes without prior written approval of SISL.

Foreign currencies denominated securities, wherever mentioned, are subject to exchange rate fluctuations, which could have an adverse effect on their value or price, or the income derived from them. In addition, investors in securities such as ADRs, the values of which are influenced by foreign currencies effectively assume currency risk.

It should not be considered to be taken as an offer to sell or a solicitation to buy any security. SISL may from time to time solicit from, or perform broking, or other services for, any company mentioned in this mail and/or its attachments.

SISL and its affiliated company(ies), their directors and employees may; (a) from time to time, have a long or short position in, and buy or sell the securities of the company(ies) mentioned herein or (b) be engaged in any other transaction involving such securities and earn brokerage or other compensation or act as a market maker in the financial instruments of the company(ies) discussed herein or act as an advisor or lender/borrower to such company(ies) or may have any other potential conflict of interests with respect to any recommendation and other related information and opinions.

SISL, its directors, analysts or employees do not take any responsibility, financial or otherwise, of the losses or the damages sustained due to the investments made or any action taken on basis of this report, including but not restricted to, fluctuation in the prices of shares and bonds, changes in the currency rates, diminution in the NAVs, reduction in the dividend or income, etc.

SISL and other group companies, its directors, associates, employees may have various positions in any of the stocks, securities and financial instruments dealt in the report, or may make sell or purchase or other deals in these securities from time to time or may deal in other securities of the companies / organizations described in this report.

SISL or its associates might have managed or co-managed public offering of securities for the subject company or might have been mandated by the subject company for any other assignment in the past twelvemonths.

SISL or its associates might have received any compensation from the companies mentioned in the report during the period preceding twelve months from t date of this report for services in respect of managing or co-managing public offerings, corporate finance, investment banking or merchant banking, brokerage services or other advisory service in a merger or specific transaction in the normal course of business.

SISL or its analysts did not receive any compensation or other benefits from the companies mentioned in the report or third party in connection with preparation of the research report. Accordingly, neither SISL nor Research Analysts have any material conflict of interest at the time of publication of this report. Compensation of our Research Analysts is not based on any specific merchant banking, investment banking or brokerage service transactions. SISL may have issued other reports that are inconsistent with and reach different conclusion from the information presented in this report.