

Dated: 02-11-2020 21:14

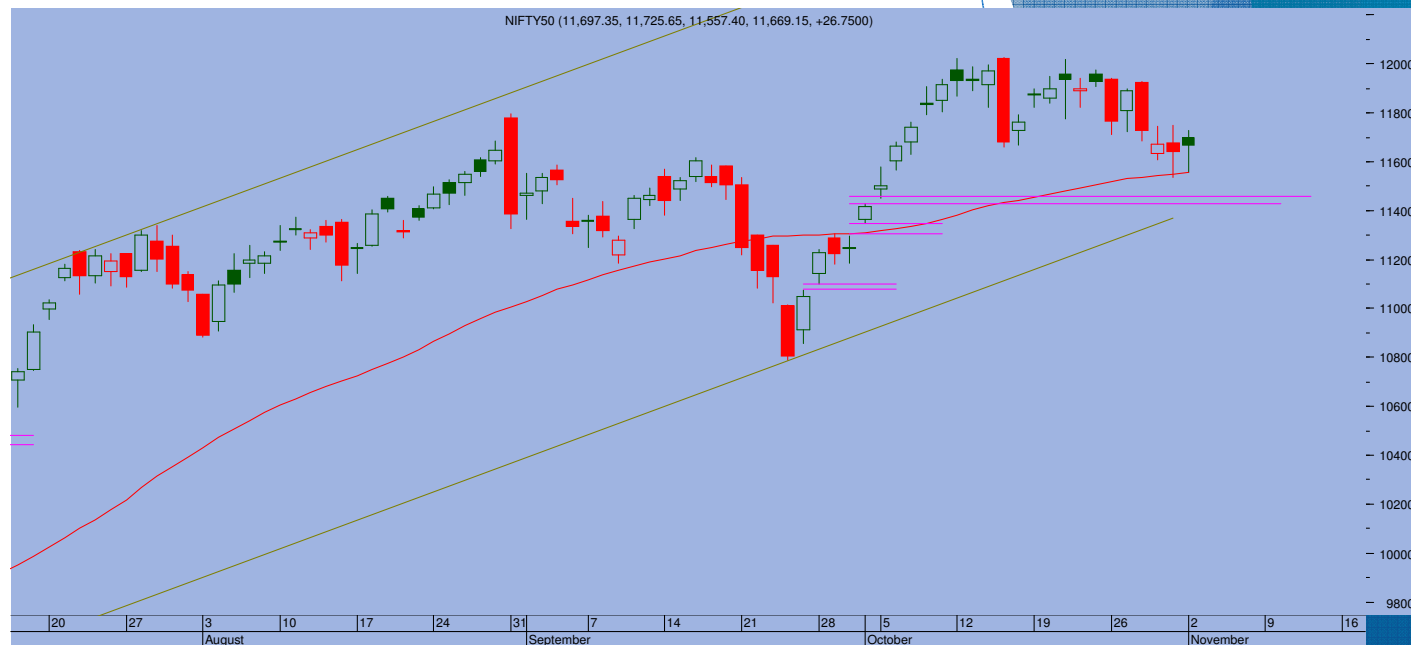
## Top Trade

### NIFTY - 11669

Buy Nifty S/l blw 11580 tgt 11820-11850

### BANKNIFTY - 24892

Buy Bank Nifty s/l blw 24750 Tgt 25200-25300



- While Market leader Reliance Ind lost almost 8%, it was banking all the way that gave a strong boost to the markets. Nifty managed to close with a gain of 27 points to end at 11670
- An inside the bar candle was formed as the index pulled back from the 50 DMA. As the index has managed to sustain the 11600 levels on closing basis, it looks like that it can forge a rebound in coming days.
- 11750 is immediate resistance. Above that, the index can move higher towards 11820-11850 levels.
- On the lower side, 11550 has emerged as strong support. Unless it gets violated, the markets are expected to remain positively biased.

### TRADE WHIZARD4504

Scrip	B/S	Rate	S/L	Tgt1	Tgt2	Remarks
Axis Bank1 Fut	Buy	524	518	532	536	1 Day
Manapuram1 Fut	Buy	159	156	162	164	1 Day
NTPC1 Fut	Buy	89	87.5	91	92	1 Day

### PIVOT POINTS

Security Name	CMP	Pivot	S1	S2	S3	R1	R2	R3	OI %
*BANKNIFTY 1	24931	24732	24300	23669	23237	25363	25795	26426	1.92
*NIFTY1 1	11682	11659	11583	11484	11408	11758	11834	11932	-8.65
AXISBANK 1	524	517	502	481	466	539	554	576	1.74
BHARTIARTL 1	458	451	442	426	417	467	476	492	-3.09
BPCL 1	348	350	345	341	336	354	359	362	1.41
HDFC 1	2046	2012	1957	1867	1811	2102	2157	2247	-0.58
HDFC BANK - 1	1218	1208	1190	1162	1144	1236	1254	1282	-1.38
HPCL 1	188	187	186	184	183	189	191	192	-0.79
ICICI BANK - 1	419	417	410	400	393	427	434	444	2.67
INDUSINDBK 1	631	621	603	575	557	649	667	695	1.29
INFY1 1	1073	1069	1057	1040	1029	1085	1097	1113	-1.39
KOTAKBANK 1	1577	1568	1539	1502	1472	1606	1635	1673	-0.29
LT 1	915	916	905	895	884	926	937	947	-1.11
MARUTI - 1	6899	6936	6823	6746	6633	7013	7126	7203	3.65
REL INDS 1	1882	1928	1821	1759	1651	1990	2098	2160	9.37
SBI 1	197	195	192	187	184	200	203	208	0.06
TATASTEEL 1	405	406	399	393	385	412	420	426	2.65
TCS - 1	2616	2629	2594	2572	2537	2651	2686	2708	2.81



Prepared by:  
Nirav Vakharia, Head Research  
Share India Securities Limited  
14, Dayanand Vihar, 1 Kakardooma Metro Station, Delhi-110092  
Email: [research@shareindia.co.in](mailto:research@shareindia.co.in)  
SEBI Research Analyst Reg no. INH100005011

**Disclosure:**

We, research team at Share India Securities Ltd. (SISL), authors and the names subscribed to this report, hereby certify that all of the views expressed in this research report accurately reflect our views about the subject issuer(s) or securities. SISL has no material adverse disciplinary history as on the date of publication of this report. We also certify that no part of our compensation was, is, or will be directly or indirectly related to the specific recommendation(s) or view(s) in this report.

Research Analyst or his/her relative or SISL may have any financial interest in the subject company. Also Research Analyst or his relative or SISL or its Associate may have beneficial ownership of 1% or more in the subject company at the end of the immediately preceding the date of publication of the Research Report. Further Research Analyst or his relative or SISL or its associate does not have any material conflict of interest.

SISL is a SEBI Registered Research Analyst having registration no. INH100005011.

**Disclaimer:**

This report has been prepared by SISL and is meant for sole use by the recipient and not for circulation. The information and opinions contained herein have been compiled or arrived at, based upon information obtained in good faith from sources believed to be reliable. Such information has not been independently verified and no guaranty, representation of warranty, express or implied, is made as to its accuracy, completeness or correctness. All such information and opinions are subject to change without notice. This document is for information purposes only. Descriptions of any company or companies or their securities mentioned herein are not intended to be complete and this document is not, and should not be construed as an offer or solicitation of an offer, to buy or sell any securities or other financial instruments.

This report is not directed to, or intended for display, downloading, printing, reproducing or for distribution to or use by, any person or entity who is a citizen or resident or located in any locality, state, country or other jurisdiction where such distribution, publication, reproduction, availability or use would be contrary to law or regulation or what would subject SISL or its affiliates to any registration or licensing requirement within such jurisdiction.

If this report is inadvertently sent or has reached any individual in such country, especially, USA, the same may be ignored and brought to the attention of the sender. This document may not be reproduced, distributed or published for any purposes without prior written approval of SISL.

Foreign currencies denominated securities, wherever mentioned, are subject to exchange rate fluctuations, which could have an adverse effect on their value or price, or the income derived from them. In addition, investors in securities such as ADRs, the values of which are influenced by foreign currencies effectively assume currency risk.

It should not be considered to be taken as an offer to sell or a solicitation to buy any security. SISL may from time to time solicit from, or perform broking, or other services for, any company mentioned in this mail and/or its attachments.

SISL and its affiliated company(ies), their directors and employees may; (a) from time to time, have a long or short position in, and buy or sell the securities of the company(ies) mentioned herein or (b) be engaged in any other transaction involving such securities and earn brokerage or other compensation or act as a market maker in the financial instruments of the company(ies) discussed herein or act as an advisor or lender/borrower to such company(ies) or may have any other potential conflict of interests with respect to any recommendation and other related information and opinions.

SISL, its directors, analysts or employees do not take any responsibility, financial or otherwise, of the losses or the damages sustained due to the investments made or any action taken on basis of this report, including but not restricted to, fluctuation in the prices of shares and bonds, changes in the currency rates, diminution in the NAVs, reduction in the dividend or income, etc.

SISL and other group companies, its directors, associates, employees may have various positions in any of the stocks, securities and financial instruments dealt in the report, or may make sell or purchase or other deals in these securities from time to time or may deal in other securities of the companies / organizations described in this report.

SISL or its associates might have managed or co-managed public offering of securities for the subject company or might have been mandated by the subject company for any other assignment in the past twelvemonths.

SISL or its associates might have received any compensation from the companies mentioned in the report during the period preceding twelve months from t date of this report for services in respect of managing orco-managing public offerings, corporate finance, investment banking or merchant banking, brokerage services or other advisory service in a merger or specific transaction in the normal course of business.

SISL or its analysts did not receive any compensation or other benefits from the companies mentioned in the report or third party in connection with preparation of the research report. Accordingly, neither SISL nor Research Analysts have any material conflict of interest at the time of publication of this report. Compensation of our Research Analysts is not based on any specific merchant banking, investment banking or brokerage service transactions. SISL may have issued other reports that are inconsistent with and reach different conclusion from the information presented in this report.