

Dated: 28-10-2020 21:17

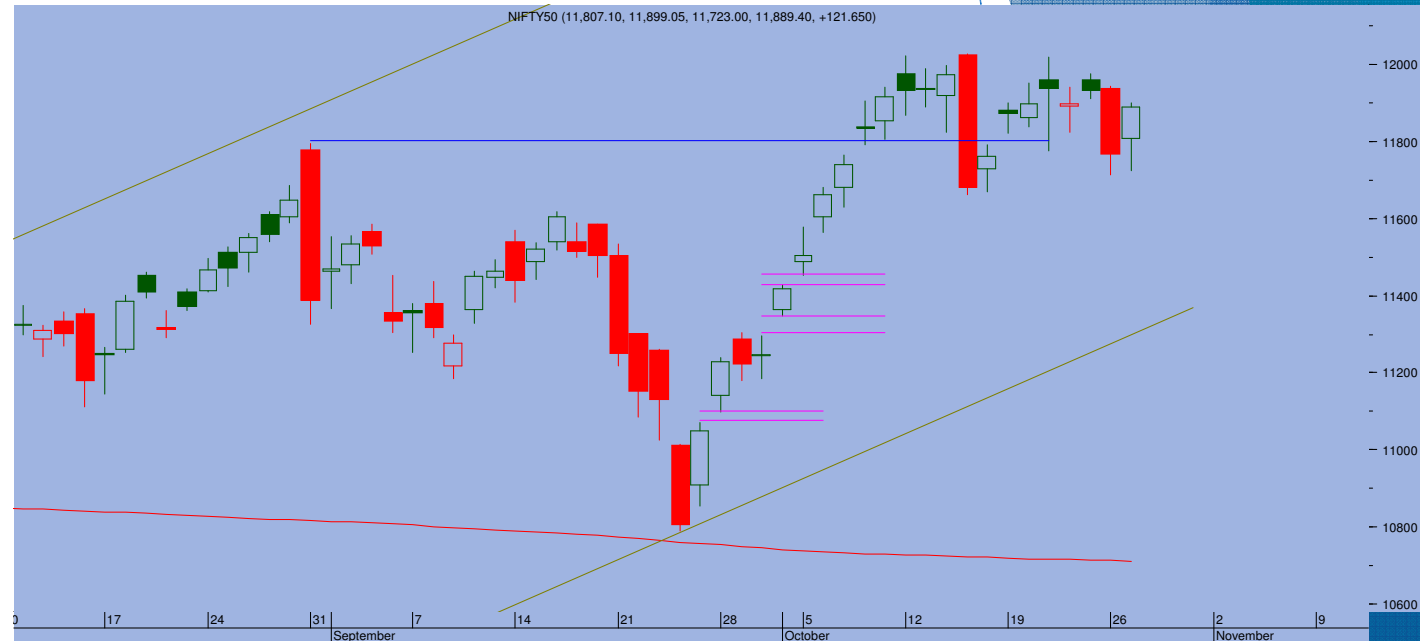
Top Trade

NIFTY - 11730

- Sell Nifty arnd 11760 S/l abv 11820 tgt 11660-11620

BANKNIFTY - 24232

- Sup 23875-23650 Res 24450-24760



- Markets slumped sharply after noon on weak European opening, pushing the index sharply lower to end at 11730, losing 159 points
- A bearish Engulfing candle was formed as the index collapsed dramatically from the day's high of 11929. Its been very volatile past few days with only handful of stocks participating. As Nifty has failed again from the crucial 11950 range and has ended near the lower trading range, clearly reflecting the bearish bias.
- Tomorrow, the monthly low of 11661 acts as immediate support. Its violation will push the index lower towards 11570 range. As the flight to safety increases ahead of the US election on Nov 3, the markets are expected to continue to experience weakness. Even a drop towards the lower trend channel line support at 11400 range is not ruled out over next few days which shall stand as all crucial support level.
- On the higher side, 11760-11820 acts as strong resistance range.

TRADE WHIZARD4504

Scrip	B/S	Rate	S/L	Tgt1	Tgt2	Remarks
Auro Pharma2 Fut	Sell	778	785	768	762	1 Day
Mindtree2 Fut	Sell	1320	1335	1300	1292	1 Day
Indusind Bank2 Fut	Sell	595	602	586	582	1 Day

PIVOT POINTS

Security Name	CMP	Pivot	S1	S2	S3	R1	R2	R3	OI %
*BANKNIFTY 1	24214	24236	23677	23139	22580	24774	25333	25871	NA
*NIFTY1 1	11722	11771	11625	11529	11383	11868	12014	12110	NA
AXISBANK 1	505	506	493	481	469	518	530	542	NA
BHARTIARTL 1	451	459	431	412	383	479	507	527	NA
BPCL 1	345	346	342	338	334	349	353	357	NA
HDFC 1	1973	1994	1946	1919	1870	2021	2070	2097	NA
HDFC BANK - 1	1208	1214	1196	1183	1165	1226	1244	1257	NA
HPCL 1	172	173	170	168	165	175	178	180	NA
ICICI BANK - 1	397	401	391	385	376	406	416	422	NA
INDUSINDBK 1	592	598	579	567	548	610	629	641	NA
INFY1 1	1078	1085	1065	1052	1032	1098	1118	1131	NA
KOTAKBANK 1	1549	1554	1534	1519	1499	1568	1588	1603	NA
LT 1	984	984	974	964	954	994	1003	1013	NA
MARUTI - 1	7174	7205	7075	6976	6846	7304	7435	7533	NA
REL INDS 1	2017	2030	1999	1981	1950	2048	2079	2097	NA
SBI 1	190	191	188	185	182	194	198	200	NA
TATASTEEL 1	402	407	395	389	377	414	425	432	NA
TCS - 1	2627	2631	2606	2586	2562	2651	2675	2695	NA



Prepared by:
Nirav Vakharia, Head Research
Share India Securities Limited
14, Dayanand Vihar, 1 Kakardooma Metro Station, Delhi-110092
Email: research@shareindia.co.in
SEBI Research Analyst Reg no. INH100005011

Disclosure:

We, research team at Share India Securities Ltd. (SISL), authors and the names subscribed to this report, hereby certify that all of the views expressed in this research report accurately reflect our views about the subject issuer(s) or securities. SISL has no material adverse disciplinary history as on the date of publication of this report. We also certify that no part of our compensation was, is, or will be directly or indirectly related to the specific recommendation(s) or view(s) in this report.

Research Analyst or his/her relative or SISL may have any financial interest in the subject company. Also Research Analyst or his relative or SISL or its Associate may have beneficial ownership of 1% or more in the subject company at the end of the immediately preceding the date of publication of the Research Report. Further Research Analyst or his relative or SISL or its associate does not have any material conflict of interest.

SISL is a SEBI Registered Research Analyst having registration no. INH100005011.

Disclaimer:

This report has been prepared by SISL and is meant for sole use by the recipient and not for circulation. The information and opinions contained herein have been compiled or arrived at, based upon information obtained in good faith from sources believed to be reliable. Such information has not been independently verified and no guaranty, representation of warranty, express or implied, is made as to its accuracy, completeness or correctness. All such information and opinions are subject to change without notice. This document is for information purposes only. Descriptions of any company or companies or their securities mentioned herein are not intended to be complete and this document is not, and should not be construed as an offer or solicitation of an offer, to buy or sell any securities or other financial instruments.

This report is not directed to, or intended for display, downloading, printing, reproducing or for distribution to or use by, any person or entity who is a citizen or resident or located in any locality, state, country or other jurisdiction where such distribution, publication, reproduction, availability or use would be contrary to law or regulation or what would subject SISL or its affiliates to any registration or licensing requirement within such jurisdiction.

If this report is inadvertently sent or has reached any individual in such country, especially, USA, the same may be ignored and brought to the attention of the sender. This document may not be reproduced, distributed or published for any purposes without prior written approval of SISL.

Foreign currencies denominated securities, wherever mentioned, are subject to exchange rate fluctuations, which could have an adverse effect on their value or price, or the income derived from them. In addition, investors in securities such as ADRs, the values of which are influenced by foreign currencies effectively assume currency risk.

It should not be considered to be taken as an offer to sell or a solicitation to buy any security. SISL may from time to time solicit from, or perform broking, or other services for, any company mentioned in this mail and/or its attachments.

SISL and its affiliated company(ies), their directors and employees may; (a) from time to time, have a long or short position in, and buy or sell the securities of the company(ies) mentioned herein or (b) be engaged in any other transaction involving such securities and earn brokerage or other compensation or act as a market maker in the financial instruments of the company(ies) discussed herein or act as an advisor or lender/borrower to such company(ies) or may have any other potential conflict of interests with respect to any recommendation and other related information and opinions.

SISL, its directors, analysts or employees do not take any responsibility, financial or otherwise, of the losses or the damages sustained due to the investments made or any action taken on basis of this report, including but not restricted to, fluctuation in the prices of shares and bonds, changes in the currency rates, diminution in the NAVs, reduction in the dividend or income, etc.

SISL and other group companies, its directors, associates, employees may have various positions in any of the stocks, securities and financial instruments dealt in the report, or may make sell or purchase or other deals in these securities from time to time or may deal in other securities of the companies / organizations described in this report.

SISL or its associates might have managed or co-managed public offering of securities for the subject company or might have been mandated by the subject company for any other assignment in the past twelvemonths.

SISL or its associates might have received any compensation from the companies mentioned in the report during the period preceding twelve months from t date of this report for services in respect of managing orco-managing public offerings, corporate finance, investment banking or merchant banking, brokerage services or other advisory service in a merger or specific transaction in the normal course of business.

SISL or its analysts did not receive any compensation or other benefits from the companies mentioned in the report or third party in connection with preparation of the research report. Accordingly, neither SISL nor Research Analysts have any material conflict of interest at the time of publication of this report. Compensation of our Research Analysts is not based on any specific merchant banking, investment banking or brokerage service transactions. SISL may have issued other reports that are inconsistent with and reach different conclusion from the information presented in this report.