

Daily

MARKET STRATEGIES



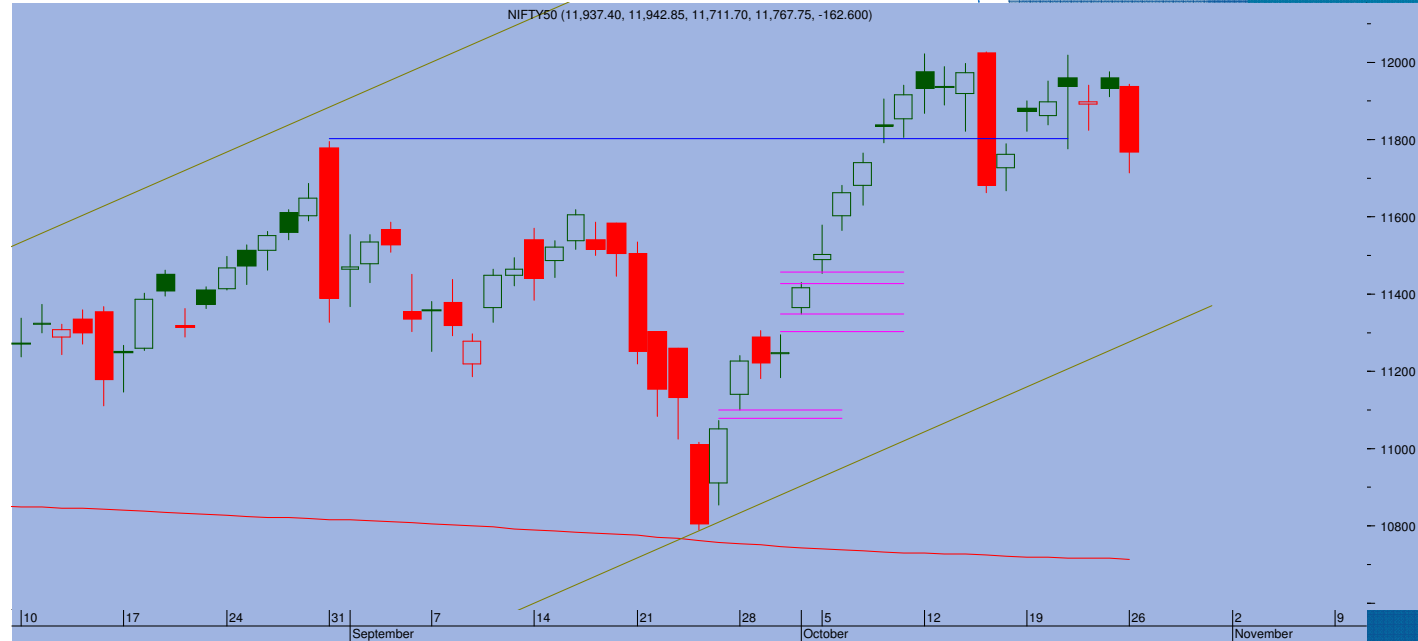
Top Trade

NIFTY - 11767

- Sell Nifty around 11800 range s/l abv 11880 Tgt 11720-11660

BANKNIFTY - 24075

- Sup 23875-23650 Res 24250-24450



- > Global weakness on 2nd wave of Corona pandemic saw Indian stocks plunging with Nifty losing 162 points to end sharply lower at 11767
- > Big black candle formation saw Nifty decisively breaking the support of 11820 which had been providing support for last 5 days. For last 7 trading sessions, Nifty has been trading inside a the big range of a black candle formed on 15th Oct. The corrective action is expected to continue further and pull the index lower
- > The low of big black candle at 11660 is the strong support. However, in case the same gets violated, further downside towards 11460 is not ruled out. Hence caution is advised until a decisive move back follows up
- > For tomorrow, 11820 is immediate resistance level.

TRADE WHIZARD4504

Scrip	B/S	Rate	S/L	Tgt1	Tgt2	Remarks
Bandhan Bank1 Fut	Sell	300	305	294	290	1 Day
DLF1 Fut	Sell	166	169	162	160	1 Day
Lupin1 Fut	Sell	965	975	952	945	1 Day

PIVOT POINTS

Security Name	CMP	Pivot	S1	S2	S3	R1	R2	R3	OI %
*BANKNIFTY 1	24109	24170	23790	23470	23090	24489	24870	25189	NA
*NIFTY1 1	11778	11814	11677	11575	11438	11915	12052	12154	NA
AXISBANK 1	493	498	486	479	467	505	517	524	NA
BHARTIARTL 1	434	434	428	422	417	440	445	451	NA
BPCL 1	346	348	341	336	330	353	359	364	NA
HDFC 1	2073	2070	2056	2039	2025	2086	2100	2117	NA
HDFC BANK - 1	1215	1222	1201	1186	1165	1236	1258	1272	NA
HPCL 1	175	177	171	167	161	181	187	191	NA
ICICI BANK - 1	405	409	398	391	380	416	427	434	NA
INDUSINDBK 1	617	622	609	600	587	630	643	652	NA
INFY1 1	1115	1116	1103	1091	1079	1128	1141	1152	NA
KOTAKBANK 1	1414	1396	1366	1317	1287	1444	1475	1523	NA
LT 1	951	951	943	934	926	960	968	977	NA
MARUTI - 1	7053	7051	6938	6823	6709	7166	7280	7395	NA
REL INDS 1	2035	2056	2002	1970	1916	2089	2143	2175	NA
SBI 1	197	199	194	190	185	202	208	211	NA
TATASTEEL 1	409	412	401	393	382	420	431	438	NA
TCS - 1	2688	2690	2670	2652	2633	2708	2728	2746	NA



Prepared by:
Nirav Vakharia, Head Research
Share India Securities Limited
14, Dayanand Vihar, 1 Kakardooma Metro Station, Delhi-110092
Email: research@shareindia.co.in
SEBI Research Analyst Reg no. INH100005011

Disclosure:

We, research team at Share India Securities Ltd. (SISL), authors and the names subscribed to this report, hereby certify that all of the views expressed in this research report accurately reflect our views about the subject issuer(s) or securities. SISL has no material adverse disciplinary history as on the date of publication of this report. We also certify that no part of our compensation was, is, or will be directly or indirectly related to the specific recommendation(s) or view(s) in this report.

Research Analyst or his/her relative or SISL may have any financial interest in the subject company. Also Research Analyst or his relative or SISL or its Associate may have beneficial ownership of 1% or more in the subject company at the end of the immediately preceding the date of publication of the Research Report. Further Research Analyst or his relative or SISL or its associate does not have any material conflict of interest.

SISL is a SEBI Registered Research Analyst having registration no. INH100005011.

Disclaimer:

This report has been prepared by SISL and is meant for sole use by the recipient and not for circulation. The information and opinions contained herein have been compiled or arrived at, based upon information obtained in good faith from sources believed to be reliable. Such information has not been independently verified and no guaranty, representation of warranty, express or implied, is made as to its accuracy, completeness or correctness. All such information and opinions are subject to change without notice. This document is for information purposes only. Descriptions of any company or companies or their securities mentioned herein are not intended to be complete and this document is not, and should not be construed as an offer or solicitation of an offer, to buy or sell any securities or other financial instruments.

This report is not directed to, or intended for display, downloading, printing, reproducing or for distribution to or use by, any person or entity who is a citizen or resident or located in any locality, state, country or other jurisdiction where such distribution, publication, reproduction, availability or use would be contrary to law or regulation or what would subject SISL or its affiliates to any registration or licensing requirement within such jurisdiction.

If this report is inadvertently sent or has reached any individual in such country, especially, USA, the same may be ignored and brought to the attention of the sender. This document may not be reproduced, distributed or published for any purposes without prior written approval of SISL.

Foreign currencies denominated securities, wherever mentioned, are subject to exchange rate fluctuations, which could have an adverse effect on their value or price, or the income derived from them. In addition, investors in securities such as ADRs, the values of which are influenced by foreign currencies effectively assume currency risk.

It should not be considered to be taken as an offer to sell or a solicitation to buy any security. SISL may from time to time solicit from, or perform broking, or other services for, any company mentioned in this mail and/or its attachments.

SISL and its affiliated company(ies), their directors and employees may; (a) from time to time, have a long or short position in, and buy or sell the securities of the company(ies) mentioned herein or (b) be engaged in any other transaction involving such securities and earn brokerage or other compensation or act as a market maker in the financial instruments of the company(ies) discussed herein or act as an advisor or lender/borrower to such company(ies) or may have any other potential conflict of interests with respect to any recommendation and other related information and opinions.

SISL, its directors, analysts or employees do not take any responsibility, financial or otherwise, of the losses or the damages sustained due to the investments made or any action taken on basis of this report, including but not restricted to, fluctuation in the prices of shares and bonds, changes in the currency rates, diminution in the NAVs, reduction in the dividend or income, etc.

SISL and other group companies, its directors, associates, employees may have various positions in any of the stocks, securities and financial instruments dealt in the report, or may make sell or purchase or other deals in these securities from time to time or may deal in other securities of the companies / organizations described in this report.

SISL or its associates might have managed or co-managed public offering of securities for the subject company or might have been mandated by the subject company for any other assignment in the past twelvemonths.

SISL or its associates might have received any compensation from the companies mentioned in the report during the period preceding twelve months from t date of this report for services in respect of managing orco-managing public offerings, corporate finance, investment banking or merchant banking, brokerage services or other advisory service in a merger or specific transaction in the normal course of business.

SISL or its analysts did not receive any compensation or other benefits from the companies mentioned in the report or third party in connection with preparation of the research report. Accordingly, neither SISL nor Research Analysts have any material conflict of interest at the time of publication of this report. Compensation of our Research Analysts is not based on any specific merchant banking, investment banking or brokerage service transactions. SISL may have issued other reports that are inconsistent with and reach different conclusion from the information presented in this report.