

Dated: 25-10-2020 19:12

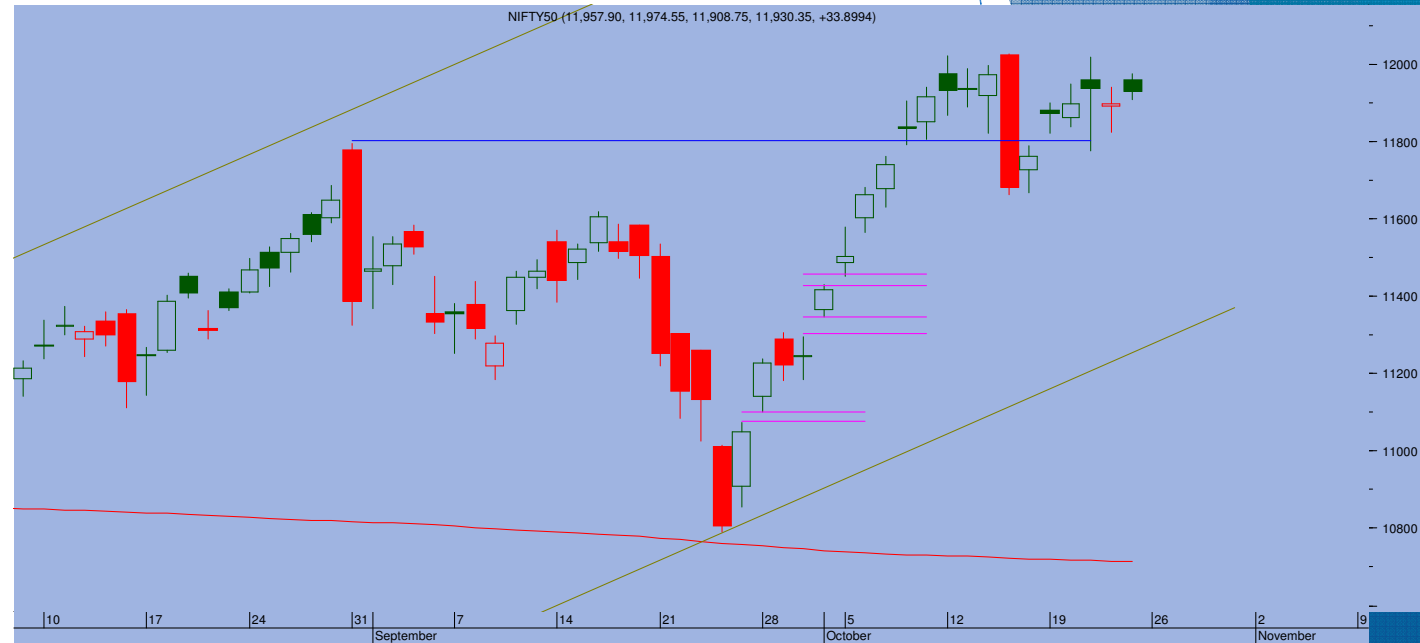
## Top Trade

### NIFTY - 11936

Sup 11870-11820 Res 12020-12100

### BANKNIFTY - 24478

Sup 24150-23950 Res 24650-24900



- Once again a range bound movement as markets witnessed little activity in frontline stocks. Nifty ended at 11930, gaining 34 points
- Though gaining 167 points through the week, it exhibited range bound trend for last 2 days, indicating consolidation. Over the month, it has gained over 682 points to recover 12000 levels again after a span of 8 months. Thus the underlying momentum remains highly positive.
- For the week though, the index needs to break 12020 in order to breakout the consolidation seen over the week. Above 12020, next resistance is at 12200
- On the lower side, 11870-11820 act as immediate support levels.

### TRADE WHIZARD4504

Scrip	B/S	Rate	S/L	Tgt1	Tgt2	Remarks
Amara Raja1 Fut	Buy	763	755	772	775	1 Day
Ashok Ley1 Fut	Buy	82	80	85	86	1 Day
Chola Fiinance ` Fut	Buy	251	248	255	257	1 Day

### PIVOT POINTS

Security Name	CMP	Pivot	S1	S2	S3	R1	R2	R3	OI %
*BANKNIFTY 1	24537	24568	24348	24159	23938	24758	24978	25167	3.10
*NIFTY1 1	11934	11941	11901	11869	11829	11974	12013	12046	-1.42
AXISBANK 1	508	509	503	498	492	515	521	526	-7.06
BHARTIARTL 1	434	433	428	423	418	439	443	449	-12.44
BPCL 1	352	353	349	347	343	355	358	361	-5.20
HDFC 1	2060	2058	2048	2036	2026	2070	2080	2091	-9.78
HDFC BANK - 1	1240	1242	1233	1226	1217	1249	1258	1264	-5.01
HPCL 1	183	182	180	178	176	184	186	189	-3.02
ICICI BANK – 1	417	416	412	407	403	421	426	430	-14.54
INDUSINDBK 1	609	611	603	597	590	617	624	630	-42.82
INFY1 1	1122	1125	1117	1113	1105	1129	1137	1142	-11.38
KOTAKBANK 1	1387	1392	1377	1366	1350	1403	1419	1430	-5.87
LT 1	941	940	930	919	909	951	961	972	-9.52
MARUTI – 1	7107	7024	6924	6741	6641	7208	7308	7491	-3.74
REL INDS 1	2119	2121	2101	2082	2062	2140	2160	2179	-7.52
SBI 1	203	204	201	200	197	205	208	210	-9.02
TATASTEEL 1	424	422	416	408	402	430	436	444	-1.83
TCS - 1	2688	2690	2674	2660	2645	2704	2719	2733	-6.36



Prepared by:  
Nirav Vakharia, Head Research  
Share India Securities Limited  
14, Dayanand Vihar, 1 Kakardooma Metro Station, Delhi-110092  
Email: [research@shareindia.co.in](mailto:research@shareindia.co.in)  
SEBI Research Analyst Reg no. INH100005011

**Disclosure:**

We, research team at Share India Securities Ltd. (SISL), authors and the names subscribed to this report, hereby certify that all of the views expressed in this research report accurately reflect our views about the subject issuer(s) or securities. SISL has no material adverse disciplinary history as on the date of publication of this report. We also certify that no part of our compensation was, is, or will be directly or indirectly related to the specific recommendation(s) or view(s) in this report.

Research Analyst or his/her relative or SISL may have any financial interest in the subject company. Also Research Analyst or his relative or SISL or its Associate may have beneficial ownership of 1% or more in the subject company at the end of the immediately preceding the date of publication of the Research Report. Further Research Analyst or his relative or SISL or its associate does not have any material conflict of interest.

SISL is a SEBI Registered Research Analyst having registration no. INH100005011.

**Disclaimer:**

This report has been prepared by SISL and is meant for sole use by the recipient and not for circulation. The information and opinions contained herein have been compiled or arrived at, based upon information obtained in good faith from sources believed to be reliable. Such information has not been independently verified and no guaranty, representation of warranty, express or implied, is made as to its accuracy, completeness or correctness. All such information and opinions are subject to change without notice. This document is for information purposes only. Descriptions of any company or companies or their securities mentioned herein are not intended to be complete and this document is not, and should not be construed as an offer or solicitation of an offer, to buy or sell any securities or other financial instruments.

This report is not directed to, or intended for display, downloading, printing, reproducing or for distribution to or use by, any person or entity who is a citizen or resident or located in any locality, state, country or other jurisdiction where such distribution, publication, reproduction, availability or use would be contrary to law or regulation or what would subject SISL or its affiliates to any registration or licensing requirement within such jurisdiction.

If this report is inadvertently sent or has reached any individual in such country, especially, USA, the same may be ignored and brought to the attention of the sender. This document may not be reproduced, distributed or published for any purposes without prior written approval of SISL.

Foreign currencies denominated securities, wherever mentioned, are subject to exchange rate fluctuations, which could have an adverse effect on their value or price, or the income derived from them. In addition, investors in securities such as ADRs, the values of which are influenced by foreign currencies effectively assume currency risk.

It should not be considered to be taken as an offer to sell or a solicitation to buy any security. SISL may from time to time solicit from, or perform broking, or other services for, any company mentioned in this mail and/or its attachments.

SISL and its affiliated company(ies), their directors and employees may; (a) from time to time, have a long or short position in, and buy or sell the securities of the company(ies) mentioned herein or (b) be engaged in any other transaction involving such securities and earn brokerage or other compensation or act as a market maker in the financial instruments of the company(ies) discussed herein or act as an advisor or lender/borrower to such company(ies) or may have any other potential conflict of interests with respect to any recommendation and other related information and opinions.

SISL, its directors, analysts or employees do not take any responsibility, financial or otherwise, of the losses or the damages sustained due to the investments made or any action taken on basis of this report, including but not restricted to, fluctuation in the prices of shares and bonds, changes in the currency rates, diminution in the NAVs, reduction in the dividend or income, etc.

SISL and other group companies, its directors, associates, employees may have various positions in any of the stocks, securities and financial instruments dealt in the report, or may make sell or purchase or other deals in these securities from time to time or may deal in other securities of the companies / organizations described in this report.

SISL or its associates might have managed or co-managed public offering of securities for the subject company or might have been mandated by the subject company for any other assignment in the past twelvemonths.

SISL or its associates might have received any compensation from the companies mentioned in the report during the period preceding twelve months from t date of this report for services in respect of managing or co-managing public offerings, corporate finance, investment banking or merchant banking, brokerage services or other advisory service in a merger or specific transaction in the normal course of business.

SISL or its analysts did not receive any compensation or other benefits from the companies mentioned in the report or third party in connection with preparation of the research report. Accordingly, neither SISL nor Research Analysts have any material conflict of interest at the time of publication of this report. Compensation of our Research Analysts is not based on any specific merchant banking, investment banking or brokerage service transactions. SISL may have issued other reports that are inconsistent with and reach different conclusion from the information presented in this report.