

Dated: 14-10-2020 21:14

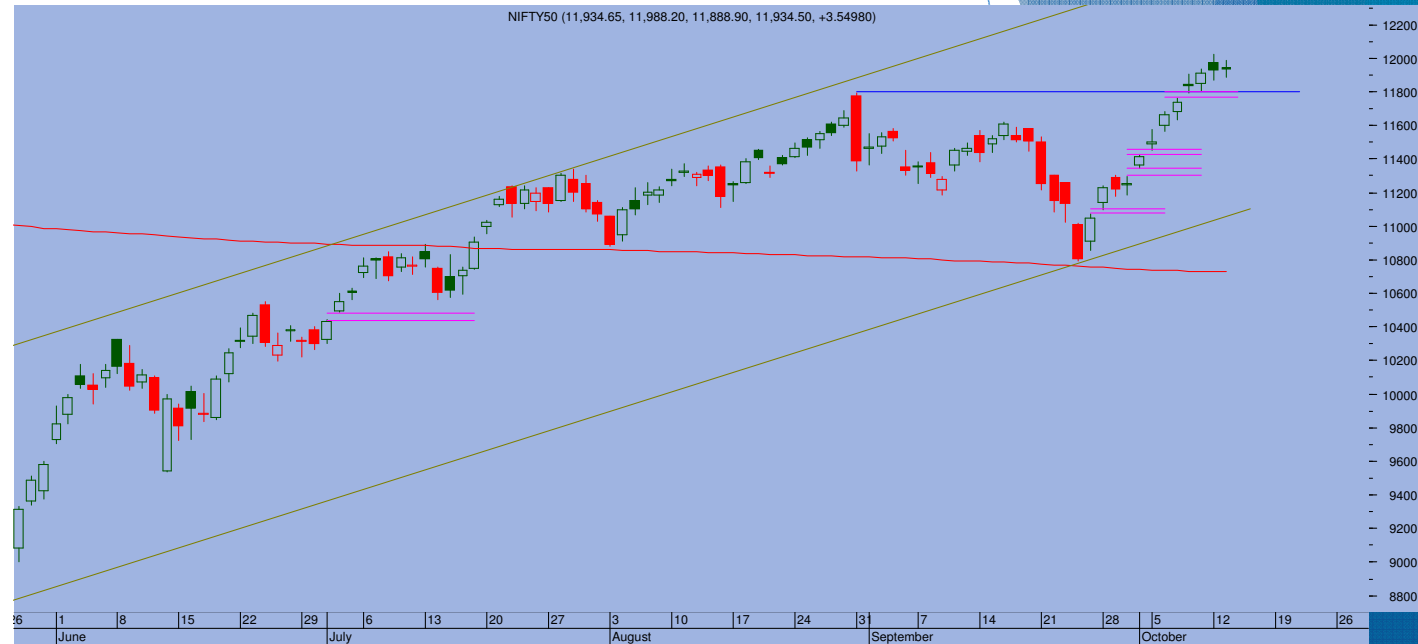
Top Trade

NIFTY - 11971

□ Sup 11867-11820 Res 12000-12070

BANKNIFTY - 23874

□ Sup 23750-23350 Res 24050-24200



- > Interest on loan moratorium case hearing in the SC helped Banking stocks stage a smart recovery which led Nifty to pull back sharply and closed at 11971, up 36 pts
- > Even as markets witnessed some volatile moves, the sharp pull back indicates that the Bulls are ready to defend the levels. Nifty climbed back to end above 1190. The big lower shadow indicates that support exists at lower end.
- > Markets are likely to have a positive opening tomorrow and Nifty could retest 12000+ levels again.
- > Since yesterday's lows have been violated, it seems that a minor change in trend is in offing. Nifty could see a sideways rangebound movement for next few days with 11860-11820 acting as crucial support range.

TRADE WHIZARD4504

Scrip	B/S	Rate	S/L	Tgt1	Tgt2	Remarks
ICICI Banak1 Fut	Buy	407	402	414	418	1 Day
LnT	Buy	918	910	930	935	1 Day
Manapuram1 Fut	Buy	167	164	172	174	1 Day

PIVOT POINTS

Security Name	CMP	Pivot	S1	S2	S3	R1	R2	R3	OI %
*BANKNIFTY 1	23951	23729	23434	22918	22623	24245	24540	25056	2.29
*NIFTY1 1	11982	11934	11865	11748	11679	12051	12120	12237	-1.65
AXISBANK 1	473	468	460	448	440	481	489	502	1.24
BHARTIARTL 1	415	416	411	407	402	420	425	428	-0.07
BPCL 1	334	335	329	324	319	340	345	350	-3.19
HDFC 1	1985	1968	1943	1900	1875	2010	2036	2078	-0.70
HDFC BANK - 1	1214	1204	1190	1166	1152	1228	1241	1266	-3.47
HPCL 1	169	168	166	163	160	172	174	178	-0.19
ICICI BANK - 1	407	402	395	383	376	415	422	434	0.11
INDUSINDBK 1	625	618	607	588	577	636	647	666	-2.04
INFY1 1	1132	1138	1119	1106	1087	1151	1170	1183	5.84
KOTAKBANK 1	1358	1348	1334	1311	1298	1371	1385	1408	-1.49
LT 1	918	909	898	879	868	929	939	959	-1.63
MARUTI - 1	7029	7026	6959	6888	6821	7096	7163	7233	1.20
REL INDS 1	2289	2288	2271	2253	2236	2306	2324	2342	-3.23
SBI 1	201	199	196	191	188	204	207	212	0.32
TATASTEEL 1	377	375	372	367	364	380	384	389	1.56
TCS - 1	2818	2820	2796	2773	2749	2842	2866	2889	-1.13



Prepared by:
Nirav Vakharia, Head Research
Share India Securities Limited
14, Dayanand Vihar, 1 Kakardooma Metro Station, Delhi-110092
Email: research@shareindia.co.in
SEBI Research Analyst Reg no. INH100005011

Disclosure:

We, research team at Share India Securities Ltd. (SISL), authors and the names subscribed to this report, hereby certify that all of the views expressed in this research report accurately reflect our views about the subject issuer(s) or securities. SISL has no material adverse disciplinary history as on the date of publication of this report. We also certify that no part of our compensation was, is, or will be directly or indirectly related to the specific recommendation(s) or view(s) in this report.

Research Analyst or his/her relative or SISL may have any financial interest in the subject company. Also Research Analyst or his relative or SISL or its Associate may have beneficial ownership of 1% or more in the subject company at the end of the immediately preceding the date of publication of the Research Report. Further Research Analyst or his relative or SISL or its associate does not have any material conflict of interest.

SISL is a SEBI Registered Research Analyst having registration no. INH100005011.

Disclaimer:

This report has been prepared by SISL and is meant for sole use by the recipient and not for circulation. The information and opinions contained herein have been compiled or arrived at, based upon information obtained in good faith from sources believed to be reliable. Such information has not been independently verified and no guaranty, representation of warranty, express or implied, is made as to its accuracy, completeness or correctness. All such information and opinions are subject to change without notice. This document is for information purposes only. Descriptions of any company or companies or their securities mentioned herein are not intended to be complete and this document is not, and should not be construed as an offer or solicitation of an offer, to buy or sell any securities or other financial instruments.

This report is not directed to, or intended for display, downloading, printing, reproducing or for distribution to or use by, any person or entity who is a citizen or resident or located in any locality, state, country or other jurisdiction where such distribution, publication, reproduction, availability or use would be contrary to law or regulation or what would subject SISL or its affiliates to any registration or licensing requirement within such jurisdiction.

If this report is inadvertently sent or has reached any individual in such country, especially, USA, the same may be ignored and brought to the attention of the sender. This document may not be reproduced, distributed or published for any purposes without prior written approval of SISL.

Foreign currencies denominated securities, wherever mentioned, are subject to exchange rate fluctuations, which could have an adverse effect on their value or price, or the income derived from them. In addition, investors in securities such as ADRs, the values of which are influenced by foreign currencies effectively assume currency risk.

It should not be considered to be taken as an offer to sell or a solicitation to buy any security. SISL may from time to time solicit from, or perform broking, or other services for, any company mentioned in this mail and/or its attachments.

SISL and its affiliated company(ies), their directors and employees may; (a) from time to time, have a long or short position in, and buy or sell the securities of the company(ies) mentioned herein or (b) be engaged in any other transaction involving such securities and earn brokerage or other compensation or act as a market maker in the financial instruments of the company(ies) discussed herein or act as an advisor or lender/borrower to such company(ies) or may have any other potential conflict of interests with respect to any recommendation and other related information and opinions.

SISL, its directors, analysts or employees do not take any responsibility, financial or otherwise, of the losses or the damages sustained due to the investments made or any action taken on basis of this report, including but not restricted to, fluctuation in the prices of shares and bonds, changes in the currency rates, diminution in the NAVs, reduction in the dividend or income, etc.

SISL and other group companies, its directors, associates, employees may have various positions in any of the stocks, securities and financial instruments dealt in the report, or may make sell or purchase or other deals in these securities from time to time or may deal in other securities of the companies / organizations described in this report.

SISL or its associates might have managed or co-managed public offering of securities for the subject company or might have been mandated by the subject company for any other assignment in the past twelvemonths.

SISL or its associates might have received any compensation from the companies mentioned in the report during the period preceding twelve months from t date of this report for services in respect of managing orco-managing public offerings, corporate finance, investment banking or merchant banking, brokerage services or other advisory service in a merger or specific transaction in the normal course of business.

SISL or its analysts did not receive any compensation or other benefits from the companies mentioned in the report or third party in connection with preparation of the research report. Accordingly, neither SISL nor Research Analysts have any material conflict of interest at the time of publication of this report. Compensation of our Research Analysts is not based on any specific merchant banking, investment banking or brokerage service transactions. SISL may have issued other reports that are inconsistent with and reach different conclusion from the information presented in this report.