

Daily

# MARKET STRATEGIES



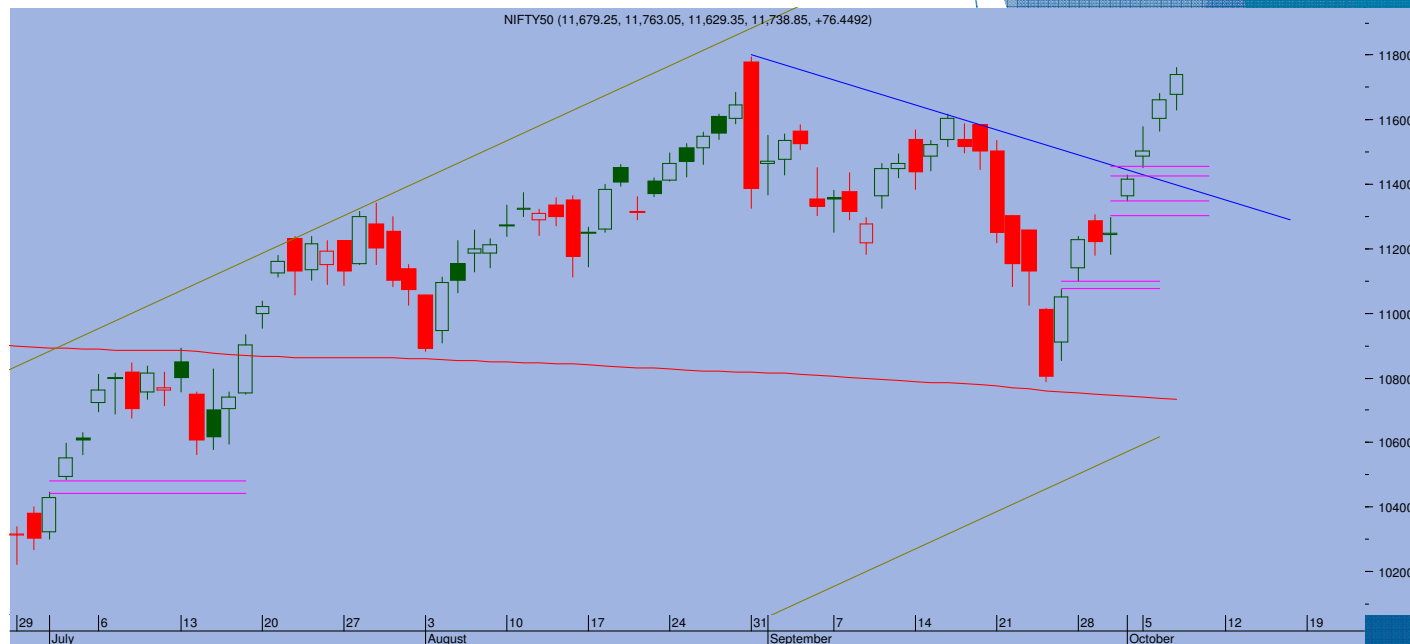
## Top Trade

### NIFTY - 11738

Sup 11720-11629 Res 11800-11920

### BANKNIFTY - 22984

Sup 23060-23230 Res 22760-22520



- Economic recovery and resurgence helped markets continue to make strong gains with Nifty ending at 11738, gaining 76 points
- What started as a recovery eight days ago has now turned into a full throttle bullish leg with Nifty zooming almost to last month high of 11794. With corporate action adding to the positive sentiments, it seems that Nifty will continue its joyride
- 11794 is the pivot level above which the index can even try to penetrate 12000 levels.
- For past eight days, previous day has not been violated. As such today low of 11629 acts as crucial support. Its violation could invite minor consolidation which would be a welcome break and generate a fresh buying opportunity

### TRADE WHIZARD4504

Scrip	B/S	Rate	S/L	Tgt1	Tgt2	Remarks
ACC1 Fut	Buy	1485	1470	1505	1512	1 Day
HCL Tech1 Fut	Buy	831	823	840	845	1 Day
Ashok Ley1 Fut	Buy	77	75	81	82	1 Day

### PIVOT POINTS

Security Name	CMP	Pivot	S1	S2	S3	R1	R2	R3	OI %
*BANKNIFTY 1	23019	22928	22748	22476	22295	23200	23380	23652	-1.39
*NIFTY1 1	11751	11723	11666	11582	11526	11807	11863	11948	3.62
AXISBANK 1	455	453	447	440	434	460	465	473	-0.20
BHARTIARTL 1	425	427	421	417	411	431	437	441	-0.63
BPCL 1	344	347	340	335	327	352	360	364	-1.05
HDFC 1	1954	1945	1922	1890	1867	1977	2000	2032	-1.02
HDFC BANK - 1	1161	1154	1144	1127	1117	1171	1181	1198	-0.09
HPCL 1	172	173	171	169	167	174	177	178	0.82
ICICI BANK – 1	385	382	378	372	368	389	393	399	0.47
INDUSINDBK 1	623	620	612	601	593	631	639	650	-2.98
INFY1 1	1056	1048	1035	1013	1000	1069	1082	1104	5.24
KOTAKBANK 1	1328	1330	1320	1311	1300	1339	1349	1358	-1.00
LT 1	892	890	882	872	864	900	908	918	6.03
MARUTI – 1	7070	7016	6947	6824	6755	7139	7208	7332	-1.54
REL INDS 1	2267	2271	2223	2179	2132	2315	2362	2406	-5.26
SBI 1	192	192	189	187	185	194	196	198	-0.74
TATASTEEL 1	372	375	369	365	359	378	384	388	0.49
TCS - 1	2747	2742	2707	2667	2631	2782	2818	2858	6.35



Prepared by:  
Nirav Vakharia, Head Research  
Share India Securities Limited  
14, Dayanand Vihar, 1 Kakardooma Metro Station, Delhi-110092  
Email: [research@shareindia.co.in](mailto:research@shareindia.co.in)  
SEBI Research Analyst Reg no. INH100005011

**Disclosure:**

We, research team at Share India Securities Ltd. (SISL), authors and the names subscribed to this report, hereby certify that all of the views expressed in this research report accurately reflect our views about the subject issuer(s) or securities. SISL has no material adverse disciplinary history as on the date of publication of this report. We also certify that no part of our compensation was, is, or will be directly or indirectly related to the specific recommendation(s) or view(s) in this report.

Research Analyst or his/her relative or SISL may have any financial interest in the subject company. Also Research Analyst or his relative or SISL or its Associate may have beneficial ownership of 1% or more in the subject company at the end of the immediately preceding the date of publication of the Research Report. Further Research Analyst or his relative or SISL or its associate does not have any material conflict of interest.

SISL is a SEBI Registered Research Analyst having registration no. INH100005011.

**Disclaimer:**

This report has been prepared by SISL and is meant for sole use by the recipient and not for circulation. The information and opinions contained herein have been compiled or arrived at, based upon information obtained in good faith from sources believed to be reliable. Such information has not been independently verified and no guaranty, representation of warranty, express or implied, is made as to its accuracy, completeness or correctness. All such information and opinions are subject to change without notice. This document is for information purposes only. Descriptions of any company or companies or their securities mentioned herein are not intended to be complete and this document is not, and should not be construed as an offer or solicitation of an offer, to buy or sell any securities or other financial instruments.

This report is not directed to, or intended for display, downloading, printing, reproducing or for distribution to or use by, any person or entity who is a citizen or resident or located in any locality, state, country or other jurisdiction where such distribution, publication, reproduction, availability or use would be contrary to law or regulation or what would subject SISL or its affiliates to any registration or licensing requirement within such jurisdiction.

If this report is inadvertently sent or has reached any individual in such country, especially, USA, the same may be ignored and brought to the attention of the sender. This document may not be reproduced, distributed or published for any purposes without prior written approval of SISL.

Foreign currencies denominated securities, wherever mentioned, are subject to exchange rate fluctuations, which could have an adverse effect on their value or price, or the income derived from them. In addition, investors in securities such as ADRs, the values of which are influenced by foreign currencies effectively assume currency risk.

It should not be considered to be taken as an offer to sell or a solicitation to buy any security. SISL may from time to time solicit from, or perform broking, or other services for, any company mentioned in this mail and/or its attachments.

SISL and its affiliated company(ies), their directors and employees may; (a) from time to time, have a long or short position in, and buy or sell the securities of the company(ies) mentioned herein or (b) be engaged in any other transaction involving such securities and earn brokerage or other compensation or act as a market maker in the financial instruments of the company(ies) discussed herein or act as an advisor or lender/borrower to such company(ies) or may have any other potential conflict of interests with respect to any recommendation and other related information and opinions.

SISL, its directors, analysts or employees do not take any responsibility, financial or otherwise, of the losses or the damages sustained due to the investments made or any action taken on basis of this report, including but not restricted to, fluctuation in the prices of shares and bonds, changes in the currency rates, diminution in the NAVs, reduction in the dividend or income, etc.

SISL and other group companies, its directors, associates, employees may have various positions in any of the stocks, securities and financial instruments dealt in the report, or may make sell or purchase or other deals in these securities from time to time or may deal in other securities of the companies / organizations described in this report.

SISL or its associates might have managed or co-managed public offering of securities for the subject company or might have been mandated by the subject company for any other assignment in the past twelvemonths.

SISL or its associates might have received any compensation from the companies mentioned in the report during the period preceding twelve months from t date of this report for services in respect of managing orco-managing public offerings, corporate finance, investment banking or merchant banking, brokerage services or other advisory service in a merger or specific transaction in the normal course of business.

SISL or its analysts did not receive any compensation or other benefits from the companies mentioned in the report or third party in connection with preparation of the research report. Accordingly, neither SISL nor Research Analysts have any material conflict of interest at the time of publication of this report. Compensation of our Research Analysts is not based on any specific merchant banking, investment banking or brokerage service transactions. SISL may have issued other reports that are inconsistent with and reach different conclusion from the information presented in this report.