

Daily

MARKET STRATEGIES



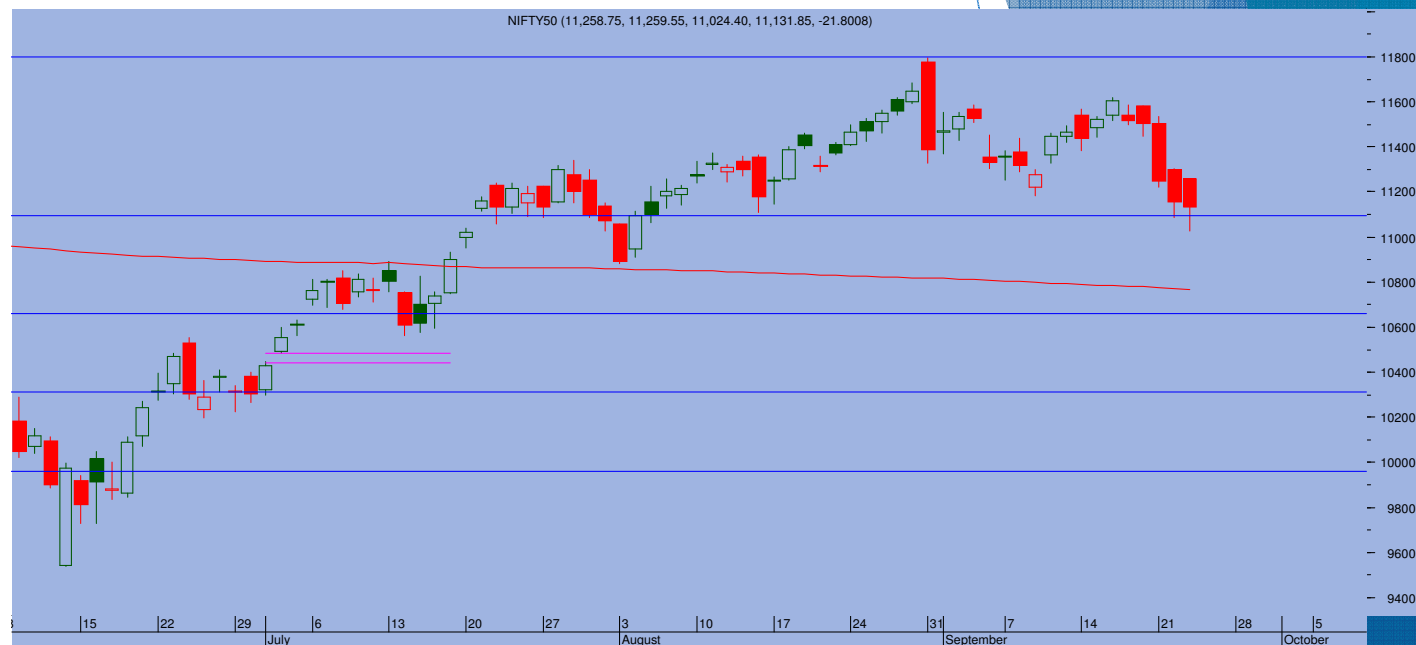
Top Trade

NIFTY - 11131

Sup 11080-11000 Res 11210-11260

BANKNIFTY - 21178

Sup 20900-20650 Res 21450-21600



- > Markets witnessed big swings on simultaneous buying and selling bouts but in the end did well to end flat as Nifty closed at 11131, losing 22 points
- > Nifty went in close to the 11000 levels before climbing back to minimize losses but the underbelly remains highly volatile. As explained earlier, the markets have entered into a corrective phase following a 3000 point rally. 10880 is the crucial support for now. However, given the big rally previously, the correction too is expected to be deeper and time consuming.
- > Immediately, a minor pull back towards 11200 may be in the offing. But just like today, higher levels may will attract fresh selling pressure. Volatility and wild swing are expected to remain at elevated levels.
- > It looks like that the immediate target level given above are expected to get achieved over next 2-3 days

TRADE WHIZARD4504

Scrip	B/S	Rate	S/L	Tgt1	Tgt2	Remarks
LIC Hsg1 Fut	Sell	278	282	273	270	1 day
Hindalco1 Fut	Sell	167	170	163	161	1 Day
Sun TV1 Fut	Sell	461	466	455	452	1 Day

PIVOT POINTS

Security Name	CMP	Pivot	S1	S2	S3	R1	R2	R3	OI %
*BANKNIFTY 1	21240	21151	20919	20598	20365	21473	21705	22026	NA
*NIFTY1 1	11148	11140	11036	10924	10819	11252	11357	11469	NA
AXISBANK 1	420	416	410	399	393	426	432	442	NA
BHARTIARTL 1	434	442	416	398	373	460	486	504	NA
BPCL 1	389	390	381	374	366	397	406	413	NA
HDFC 1	1671	1673	1651	1631	1609	1693	1715	1734	NA
HDFC BANK - 1	1050	1048	1039	1028	1019	1059	1068	1079	NA
HPCL 1	178	178	174	170	165	182	187	191	NA
ICICI BANK - 1	353	351	344	336	330	359	366	374	NA
INDUSINDBK 1	529	534	514	499	479	549	569	585	NA
INFY1 1	1021	1022	1008	995	980	1035	1050	1063	NA
KOTAKBANK 1	1278	1277	1267	1256	1247	1288	1298	1309	NA
LT 1	862	863	853	844	834	872	882	891	NA
MARUTI - 1	6513	6489	6420	6327	6259	6582	6650	6743	NA
REL INDS 1	2238	2242	2207	2176	2140	2273	2308	2339	NA
SBI 1	184	185	180	177	172	188	193	197	NA
TATASTEEL 1	362	366	353	344	331	375	387	397	NA
TCS - 1	2468	2468	2415	2361	2309	2521	2574	2628	NA



Prepared by:
Nirav Vakharia, Head Research
Share India Securities Limited
14, Dayanand Vihar, 1 Kakardooma Metro Station, Delhi-110092
Email: research@shareindia.co.in
SEBI Research Analyst Reg no. INH100005011

Disclosure:

We, research team at Share India Securities Ltd. (SISL), authors and the names subscribed to this report, hereby certify that all of the views expressed in this research report accurately reflect our views about the subject issuer(s) or securities. SISL has no material adverse disciplinary history as on the date of publication of this report. We also certify that no part of our compensation was, is, or will be directly or indirectly related to the specific recommendation(s) or view(s) in this report.

Research Analyst or his/her relative or SISL may have any financial interest in the subject company. Also Research Analyst or his relative or SISL or its Associate may have beneficial ownership of 1% or more in the subject company at the end of the immediately preceding the date of publication of the Research Report. Further Research Analyst or his relative or SISL or its associate does not have any material conflict of interest.

SISL is a SEBI Registered Research Analyst having registration no. INH100005011.

Disclaimer:

This report has been prepared by SISL and is meant for sole use by the recipient and not for circulation. The information and opinions contained herein have been compiled or arrived at, based upon information obtained in good faith from sources believed to be reliable. Such information has not been independently verified and no guaranty, representation of warranty, express or implied, is made as to its accuracy, completeness or correctness. All such information and opinions are subject to change without notice. This document is for information purposes only. Descriptions of any company or companies or their securities mentioned herein are not intended to be complete and this document is not, and should not be construed as an offer or solicitation of an offer, to buy or sell any securities or other financial instruments.

This report is not directed to, or intended for display, downloading, printing, reproducing or for distribution to or use by, any person or entity who is a citizen or resident or located in any locality, state, country or other jurisdiction where such distribution, publication, reproduction, availability or use would be contrary to law or regulation or what would subject SISL or its affiliates to any registration or licensing requirement within such jurisdiction.

If this report is inadvertently sent or has reached any individual in such country, especially, USA, the same may be ignored and brought to the attention of the sender. This document may not be reproduced, distributed or published for any purposes without prior written approval of SISL.

Foreign currencies denominated securities, wherever mentioned, are subject to exchange rate fluctuations, which could have an adverse effect on their value or price, or the income derived from them. In addition, investors in securities such as ADRs, the values of which are influenced by foreign currencies effectively assume currency risk.

It should not be considered to be taken as an offer to sell or a solicitation to buy any security. SISL may from time to time solicit from, or perform broking, or other services for, any company mentioned in this mail and/or its attachments.

SISL and its affiliated company(ies), their directors and employees may; (a) from time to time, have a long or short position in, and buy or sell the securities of the company(ies) mentioned herein or (b) be engaged in any other transaction involving such securities and earn brokerage or other compensation or act as a market maker in the financial instruments of the company(ies) discussed herein or act as an advisor or lender/borrower to such company(ies) or may have any other potential conflict of interests with respect to any recommendation and other related information and opinions.

SISL, its directors, analysts or employees do not take any responsibility, financial or otherwise, of the losses or the damages sustained due to the investments made or any action taken on basis of this report, including but not restricted to, fluctuation in the prices of shares and bonds, changes in the currency rates, diminution in the NAVs, reduction in the dividend or income, etc.

SISL and other group companies, its directors, associates, employees may have various positions in any of the stocks, securities and financial instruments dealt in the report, or may make sell or purchase or other deals in these securities from time to time or may deal in other securities of the companies / organizations described in this report.

SISL or its associates might have managed or co-managed public offering of securities for the subject company or might have been mandated by the subject company for any other assignment in the past twelvemonths.

SISL or its associates might have received any compensation from the companies mentioned in the report during the period preceding twelve months from t date of this report for services in respect of managing or co-managing public offerings, corporate finance, investment banking or merchant banking, brokerage services or other advisory service in a merger or specific transaction in the normal course of business.

SISL or its analysts did not receive any compensation or other benefits from the companies mentioned in the report or third party in connection with preparation of the research report. Accordingly, neither SISL nor Research Analysts have any material conflict of interest at the time of publication of this report. Compensation of our Research Analysts is not based on any specific merchant banking, investment banking or brokerage service transactions. SISL may have issued other reports that are inconsistent with and reach different conclusion from the information presented in this report.