

Daily

MARKET STRATEGIES



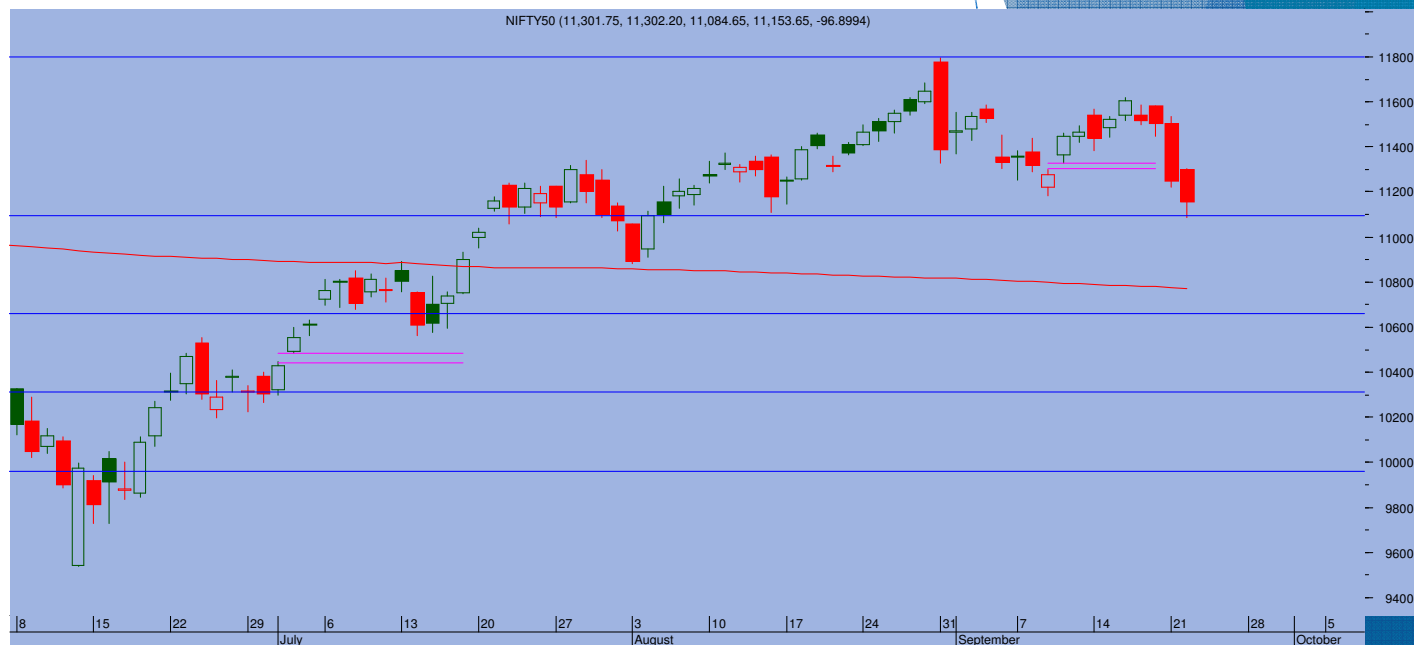
Top Trade

NIFTY - 11

Sup 11080-11000 Res 11210-11260

BANKNIFTY - 21139

Sup 20900-20650 Res 21450-21600



- > Markets followed up yesterday's sell off to lose further ground as Nifty violated 11100 briefly today before ending at 11153, down 97 point.
- > Fourth consecutive black candle was formed today as the index slumped sharply on fresh Corona virus eruption in Europe. With Nifty breaching 11100 today which was set as initial target when the index had reacted from 11800 level, the trend looks weaker and is expected to head further lower at correction gets deeper
- > A minor pull back is not ruled out at this stage after over 500 point drop. Above 11210, index can move towards 11260 but sustaining higher looks difficult.
- > On the lower side, below 11085, 11000-10950 is immediate support range. Recent low of 10880 is the target that acts as a crucial support.

TRADE WHIZARD4504

Scrip	B/S	Rate	S/L	Tgt1	Tgt2	Remarks
Lupin1 Fut	Buy	1040	1030	1055	1060	1 Day
HDFC Life1 Fut	Buy	580	575	587	592	1 Day
TechMahi1 Fut	Buy	602	595	615	620	1 Day

PIVOT POINTS

Security Name	CMP	Pivot	S1	S2	S3	R1	R2	R3	OI %
*BANKNIFTY 1	21184	21223	20929	20673	20379	21478	21772	22027	NA
*NIFTY1 1	11162	11186	11079	10997	10891	11268	11374	11457	NA
AXISBANK 1	413	415	404	395	384	424	435	444	NA
BHARTIARTL 1	471	470	462	453	445	479	488	497	NA
BPCL 1	393	393	383	372	362	403	413	423	NA
HDFC 1	1679	1689	1665	1650	1626	1704	1728	1743	NA
HDFC BANK - 1	1038	1043	1027	1016	999	1054	1070	1082	NA
HPCL 1	181	184	176	172	164	188	195	200	NA
ICICI BANK - 1	355	354	351	347	344	357	360	364	NA
INDUSINDBK 1	545	553	529	512	488	570	594	611	NA
INFY1 1	1009	1008	994	979	965	1023	1037	1052	NA
KOTAKBANK 1	1272	1279	1256	1240	1217	1295	1317	1334	NA
LT 1	858	866	844	831	809	879	900	914	NA
MARUTI - 1	6461	6490	6295	6129	5934	6656	6851	7017	NA
REL INDS 1	2218	2235	2190	2162	2118	2263	2307	2335	NA
SBI 1	187	185	182	178	175	190	193	197	NA
TATASTEEL 1	375	371	363	352	344	382	390	402	NA
TCS - 1	2527	2515	2474	2421	2379	2568	2610	2663	NA



Prepared by:
Nirav Vakharia, Head Research
Share India Securities Limited
14, Dayanand Vihar, 1 Kakardooma Metro Station, Delhi-110092
Email: research@shareindia.co.in
SEBI Research Analyst Reg no. INH100005011

Disclosure:

We, research team at Share India Securities Ltd. (SISL), authors and the names subscribed to this report, hereby certify that all of the views expressed in this research report accurately reflect our views about the subject issuer(s) or securities. SISL has no material adverse disciplinary history as on the date of publication of this report. We also certify that no part of our compensation was, is, or will be directly or indirectly related to the specific recommendation(s) or view(s) in this report.

Research Analyst or his/her relative or SISL may have any financial interest in the subject company. Also Research Analyst or his relative or SISL or its Associate may have beneficial ownership of 1% or more in the subject company at the end of the immediately preceding the date of publication of the Research Report. Further Research Analyst or his relative or SISL or its associate does not have any material conflict of interest.

SISL is a SEBI Registered Research Analyst having registration no. INH100005011.

Disclaimer:

This report has been prepared by SISL and is meant for sole use by the recipient and not for circulation. The information and opinions contained herein have been compiled or arrived at, based upon information obtained in good faith from sources believed to be reliable. Such information has not been independently verified and no guaranty, representation of warranty, express or implied, is made as to its accuracy, completeness or correctness. All such information and opinions are subject to change without notice. This document is for information purposes only. Descriptions of any company or companies or their securities mentioned herein are not intended to be complete and this document is not, and should not be construed as an offer or solicitation of an offer, to buy or sell any securities or other financial instruments.

This report is not directed to, or intended for display, downloading, printing, reproducing or for distribution to or use by, any person or entity who is a citizen or resident or located in any locality, state, country or other jurisdiction where such distribution, publication, reproduction, availability or use would be contrary to law or regulation or what would subject SISL or its affiliates to any registration or licensing requirement within such jurisdiction.

If this report is inadvertently sent or has reached any individual in such country, especially, USA, the same may be ignored and brought to the attention of the sender. This document may not be reproduced, distributed or published for any purposes without prior written approval of SISL.

Foreign currencies denominated securities, wherever mentioned, are subject to exchange rate fluctuations, which could have an adverse effect on their value or price, or the income derived from them. In addition, investors in securities such as ADRs, the values of which are influenced by foreign currencies effectively assume currency risk.

It should not be considered to be taken as an offer to sell or a solicitation to buy any security. SISL may from time to time solicit from, or perform broking, or other services for, any company mentioned in this mail and/or its attachments.

SISL and its affiliated company(ies), their directors and employees may; (a) from time to time, have a long or short position in, and buy or sell the securities of the company(ies) mentioned herein or (b) be engaged in any other transaction involving such securities and earn brokerage or other compensation or act as a market maker in the financial instruments of the company(ies) discussed herein or act as an advisor or lender/borrower to such company(ies) or may have any other potential conflict of interests with respect to any recommendation and other related information and opinions.

SISL, its directors, analysts or employees do not take any responsibility, financial or otherwise, of the losses or the damages sustained due to the investments made or any action taken on basis of this report, including but not restricted to, fluctuation in the prices of shares and bonds, changes in the currency rates, diminution in the NAVs, reduction in the dividend or income, etc.

SISL and other group companies, its directors, associates, employees may have various positions in any of the stocks, securities and financial instruments dealt in the report, or may make sell or purchase or other deals in these securities from time to time or may deal in other securities of the companies / organizations described in this report.

SISL or its associates might have managed or co-managed public offering of securities for the subject company or might have been mandated by the subject company for any other assignment in the past twelvemonths.

SISL or its associates might have received any compensation from the companies mentioned in the report during the period preceding twelve months from t date of this report for services in respect of managing orco-managing public offerings, corporate finance, investment banking or merchant banking, brokerage services or other advisory service in a merger or specific transaction in the normal course of business.

SISL or its analysts did not receive any compensation or other benefits from the companies mentioned in the report or third party in connection with preparation of the research report. Accordingly, neither SISL nor Research Analysts have any material conflict of interest at the time of publication of this report. Compensation of our Research Analysts is not based on any specific merchant banking, investment banking or brokerage service transactions. SISL may have issued other reports that are inconsistent with and reach different conclusion from the information presented in this report.