

Daily

# MARKET STRATEGIES



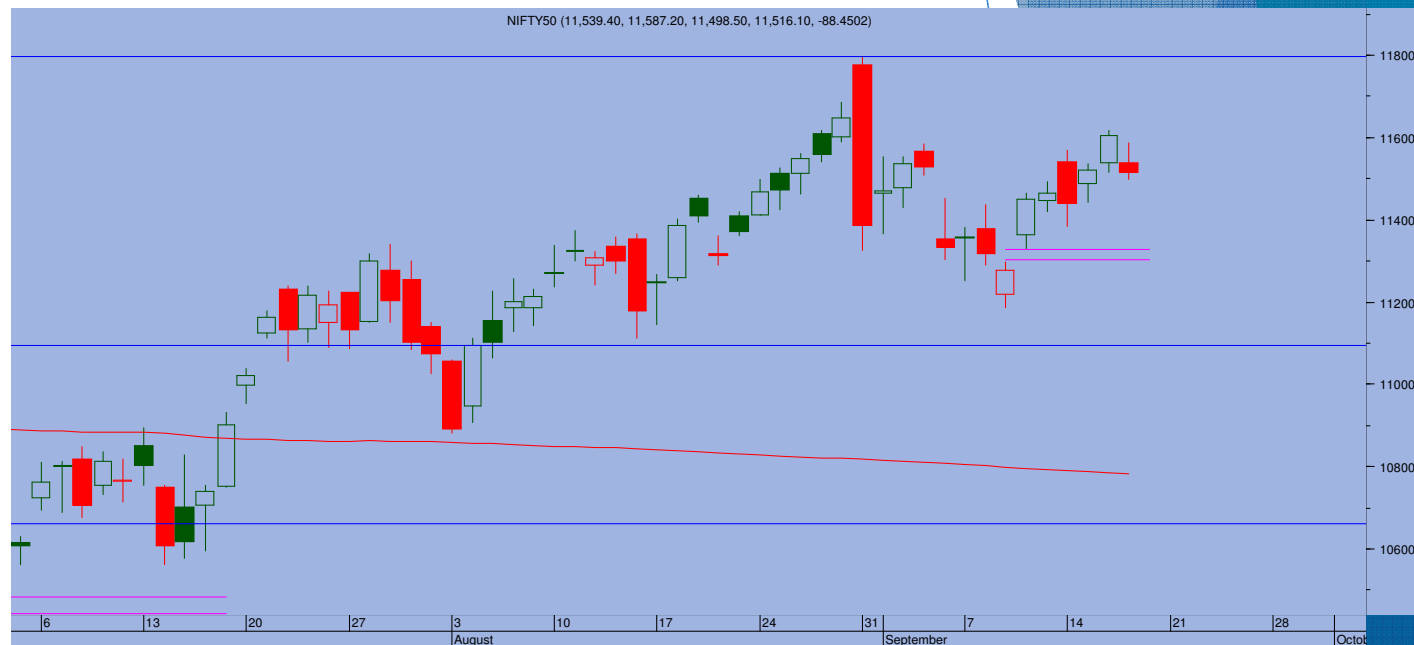
## Top Trade

### NIFTY - 11516

Sup 11440-11370 Res 11570-11600

### BANKNIFTY - 22320

Sup 22200-22000 Res 22550-22750



- Markets saw a downward move as Dow futures were reportedly trading with steep losses. Nifty ended at 11516, losing 88 points
- For last 4-5 days, Nifty has seen a recovery of the preceding fall to the recovering over 61.8% of the previous move. After yesterday's close near the highest level in three weeks, the five day rally remained corrective rally in character. Its still not conclusive yet and we could seek directions again from global markets
- Immediately, 11490 is immediate support. Below that, selling can get accelerated and push the index towards 11440. Further down, 11370 is a crucial support.
- On the higher side, 11570-11600 is resistance area.

### TRADE WHIZARD4504

Scrip	B/S	Rate	S/L	Tgt1	Tgt2	Remarks
Wipro1 Fut	Buy	312	308	317	320	1 day
Lupin1 Fut	Buy	1035	1022	1050	1060	1 day
LIC Hsg1 Fut	Buy	306	302	312	315	1 Day

### PIVOT POINTS

Security Name	CMP	Pivot	S1	S2	S3	R1	R2	R3	OI %
*BANKNIFTY 1	22392	22417	22275	22157	22015	22535	22677	22795	1.85
*NIFTY1 1	11522	11528	11478	11433	11383	11573	11623	11668	-1.36
AXISBANK 1	444	443	440	436	433	448	451	455	-6.09
BHARTIARTL 1	480	479	476	471	467	484	488	493	-0.45
BPCL 1	417	417	413	409	405	421	425	429	0.65
HDFC 1	1750	1756	1737	1723	1704	1769	1788	1802	-3.24
HDFC BANK - 1	1084	1085	1077	1070	1062	1092	1100	1107	-1.73
HPCL 1	197	196	195	192	191	199	201	203	-0.69
ICICI BANK - 1	370	370	368	365	363	373	375	378	-0.17
INDUSINDBK 1	618	618	611	604	597	625	632	639	-2.48
INFY1 1	1012	1009	998	984	972	1023	1035	1049	-1.16
KOTAKBANK 1	1308	1313	1298	1288	1273	1323	1337	1347	0.62
LT 1	910	912	905	900	892	917	925	930	1.88
MARUTI - 1	7106	7063	6995	6885	6817	7173	7241	7351	-0.03
REL INDS 1	2306	2313	2289	2273	2250	2329	2353	2369	0.37
SBI 1	196	197	195	194	192	198	200	201	-0.81
TATASTEEL 1	399	400	392	385	377	407	415	423	1.68
TCS - 1	2471	2479	2453	2435	2408	2497	2523	2541	-1.67



Prepared by:  
Nirav Vakharia, Head Research  
Share India Securities Limited  
14, Dayanand Vihar, 1 Kakardooma Metro Station, Delhi-110092  
Email: [research@shareindia.co.in](mailto:research@shareindia.co.in)  
SEBI Research Analyst Reg no. INH100005011

**Disclosure:**

We, research team at Share India Securities Ltd. (SISL), authors and the names subscribed to this report, hereby certify that all of the views expressed in this research report accurately reflect our views about the subject issuer(s) or securities. SISL has no material adverse disciplinary history as on the date of publication of this report. We also certify that no part of our compensation was, is, or will be directly or indirectly related to the specific recommendation(s) or view(s) in this report.

Research Analyst or his/her relative or SISL may have any financial interest in the subject company. Also Research Analyst or his relative or SISL or its Associate may have beneficial ownership of 1% or more in the subject company at the end of the immediately preceding the date of publication of the Research Report. Further Research Analyst or his relative or SISL or its associate does not have any material conflict of interest.

SISL is a SEBI Registered Research Analyst having registration no. INH100005011.

**Disclaimer:**

This report has been prepared by SISL and is meant for sole use by the recipient and not for circulation. The information and opinions contained herein have been compiled or arrived at, based upon information obtained in good faith from sources believed to be reliable. Such information has not been independently verified and no guaranty, representation of warranty, express or implied, is made as to its accuracy, completeness or correctness. All such information and opinions are subject to change without notice. This document is for information purposes only. Descriptions of any company or companies or their securities mentioned herein are not intended to be complete and this document is not, and should not be construed as an offer or solicitation of an offer, to buy or sell any securities or other financial instruments.

This report is not directed to, or intended for display, downloading, printing, reproducing or for distribution to or use by, any person or entity who is a citizen or resident or located in any locality, state, country or other jurisdiction where such distribution, publication, reproduction, availability or use would be contrary to law or regulation or what would subject SISL or its affiliates to any registration or licensing requirement within such jurisdiction.

If this report is inadvertently sent or has reached any individual in such country, especially, USA, the same may be ignored and brought to the attention of the sender. This document may not be reproduced, distributed or published for any purposes without prior written approval of SISL.

Foreign currencies denominated securities, wherever mentioned, are subject to exchange rate fluctuations, which could have an adverse effect on their value or price, or the income derived from them. In addition, investors in securities such as ADRs, the values of which are influenced by foreign currencies effectively assume currency risk.

It should not be considered to be taken as an offer to sell or a solicitation to buy any security. SISL may from time to time solicit from, or perform broking, or other services for, any company mentioned in this mail and/or its attachments.

SISL and its affiliated company(ies), their directors and employees may; (a) from time to time, have a long or short position in, and buy or sell the securities of the company(ies) mentioned herein or (b) be engaged in any other transaction involving such securities and earn brokerage or other compensation or act as a market maker in the financial instruments of the company(ies) discussed herein or act as an advisor or lender/borrower to such company(ies) or may have any other potential conflict of interests with respect to any recommendation and other related information and opinions.

SISL, its directors, analysts or employees do not take any responsibility, financial or otherwise, of the losses or the damages sustained due to the investments made or any action taken on basis of this report, including but not restricted to, fluctuation in the prices of shares and bonds, changes in the currency rates, diminution in the NAVs, reduction in the dividend or income, etc.

SISL and other group companies, its directors, associates, employees may have various positions in any of the stocks, securities and financial instruments dealt in the report, or may make sell or purchase or other deals in these securities from time to time or may deal in other securities of the companies / organizations described in this report.

SISL or its associates might have managed or co-managed public offering of securities for the subject company or might have been mandated by the subject company for any other assignment in the past twelvemonths.

SISL or its associates might have received any compensation from the companies mentioned in the report during the period preceding twelve months from t date of this report for services in respect of managing or co-managing public offerings, corporate finance, investment banking or merchant banking, brokerage services or other advisory service in a merger or specific transaction in the normal course of business.

SISL or its analysts did not receive any compensation or other benefits from the companies mentioned in the report or third party in connection with preparation of the research report. Accordingly, neither SISL nor Research Analysts have any material conflict of interest at the time of publication of this report. Compensation of our Research Analysts is not based on any specific merchant banking, investment banking or brokerage service transactions. SISL may have issued other reports that are inconsistent with and reach different conclusion from the information presented in this report.