

Dated: 14-09-2020 21:24

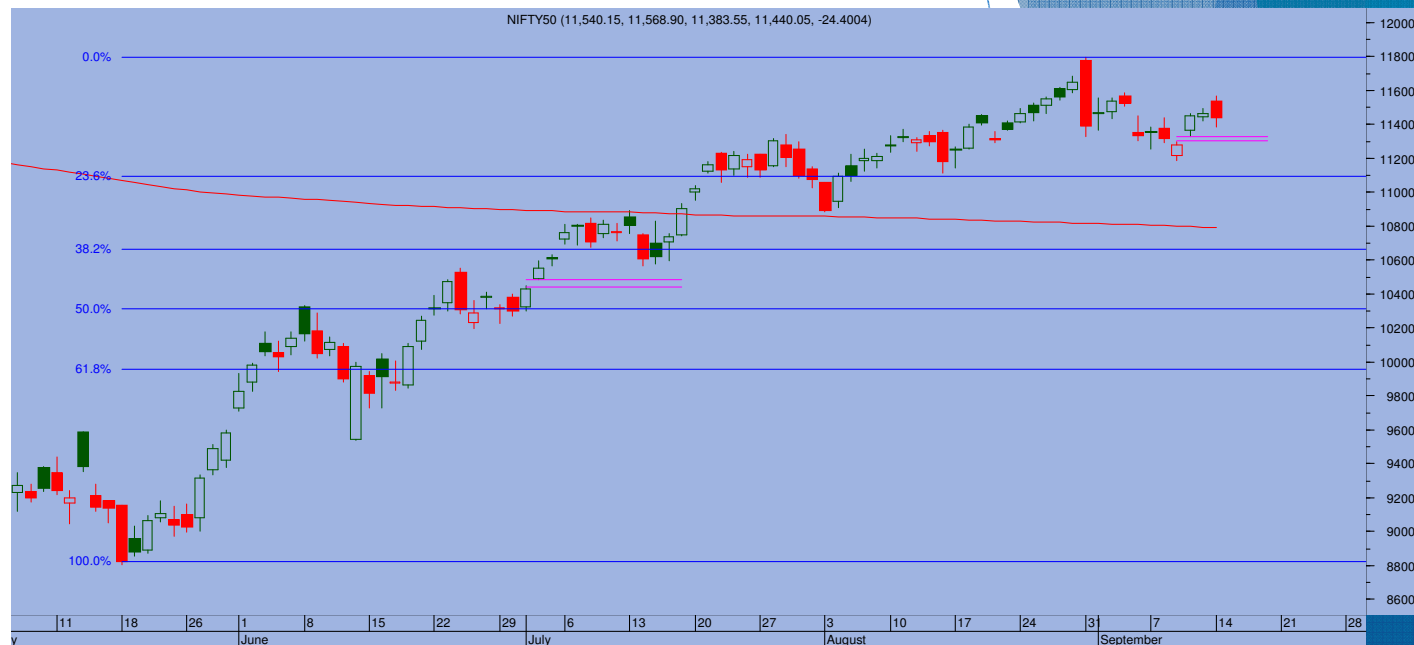
## Top Trade

### NIFTY - 11440

- Sell Nifty blw 11440 S/l abv 11530 tgt 11350-11320

### BANKNIFTY - 22101

- Sup 22050-21890 Res 22200-22350



- Markets faced a reality check as higher levels invited heavy selling pressure specially in banking stocks as a result, Nifty slipped sharply from days high of 11568 losing almost 180 points to touch a low of 11383 and finally ending at 11440 losing 24 points
- While the losses can be minor but the sharp reversal from the days high, forming a big black candle has definitely turned the three day tide. It was clearly marked in yesterday's report that 61.8% retracement level at 11570 is crucial resistance. The index reacted exactly from those levels.
- The big black candle is a negative formation and has shifted the momentum back in Bears favor. The market is expected to trade with negative bias with 11370 acting as immediate support. Below that 11320 is next support.
- Any pull back towards resistance of 11470-11520 will see renewed selling pressure.

### TRADE WHIZARD4

Scrip	B/S	Rate	S/L	Tgt1	Tgt2	Remarks
HDFC1 Fut	Sell	1745	1760	1725	1715	1 Day
Infy1 Fut	Buy	980	970	992	998	1 Day
Powergrid` Fut	Sell	172	175	168	166	1 day

### PIVOT POINTS

Security Name	CMP	Pivot	S1	S2	S3	R1	R2	R3	OI %
*BANKNIFTY 1	22190	22372	21923	21656	21208	22639	23087	23354	17.68
*NIFTY1 1	11452	11472	11375	11298	11201	11549	11646	11723	4.42
AXISBANK 1	441	446	435	428	417	452	463	470	0.70
BHARTIARTL 1	478	482	466	454	437	494	511	523	8.38
BPCL 1	418	421	412	406	397	427	437	442	-1.95
HDFC 1	1743	1758	1718	1693	1654	1783	1822	1847	2.45
HDFC BANK - 1	1062	1071	1048	1033	1010	1086	1110	1124	-2.28
HPCL 1	197	198	194	192	189	200	204	206	-1.63
ICICI BANK – 1	365	367	359	353	345	373	381	387	1.02
INDUSINDBK 1	610	612	602	594	584	620	630	638	-1.64
INFY1 1	980	974	955	930	911	999	1019	1043	6.39
KOTAKBANK 1	1307	1319	1291	1275	1247	1335	1363	1379	-3.91
LT 1	906	911	898	890	877	919	932	940	2.29
MARUTI – 1	7156	7174	7097	7038	6961	7233	7309	7368	0.30
REL INDS 1	2304	2317	2272	2240	2196	2348	2393	2425	-4.31
SBI 1	200	202	196	193	188	205	210	213	2.52
TATASTEEL 1	406	408	401	397	390	413	420	425	1.62
TCS - 1	2501	2468	2421	2342	2295	2547	2594	2673	4.42



Prepared by:  
Nirav Vakharia, Head Research  
Share India Securities Limited  
14, Dayanand Vihar, 1 Kakardooma Metro Station, Delhi-110092  
Email: [research@shareindia.co.in](mailto:research@shareindia.co.in)  
SEBI Research Analyst Reg no. INH100005011

**Disclosure:**

We, research team at Share India Securities Ltd. (SISL), authors and the names subscribed to this report, hereby certify that all of the views expressed in this research report accurately reflect our views about the subject issuer(s) or securities. SISL has no material adverse disciplinary history as on the date of publication of this report. We also certify that no part of our compensation was, is, or will be directly or indirectly related to the specific recommendation(s) or view(s) in this report.

Research Analyst or his/her relative or SISL may have any financial interest in the subject company. Also Research Analyst or his relative or SISL or its Associate may have beneficial ownership of 1% or more in the subject company at the end of the immediately preceding the date of publication of the Research Report. Further Research Analyst or his relative or SISL or its associate does not have any material conflict of interest.

SISL is a SEBI Registered Research Analyst having registration no. INH100005011.

**Disclaimer:**

This report has been prepared by SISL and is meant for sole use by the recipient and not for circulation. The information and opinions contained herein have been compiled or arrived at, based upon information obtained in good faith from sources believed to be reliable. Such information has not been independently verified and no guaranty, representation of warranty, express or implied, is made as to its accuracy, completeness or correctness. All such information and opinions are subject to change without notice. This document is for information purposes only. Descriptions of any company or companies or their securities mentioned herein are not intended to be complete and this document is not, and should not be construed as an offer or solicitation of an offer, to buy or sell any securities or other financial instruments.

This report is not directed to, or intended for display, downloading, printing, reproducing or for distribution to or use by, any person or entity who is a citizen or resident or located in any locality, state, country or other jurisdiction where such distribution, publication, reproduction, availability or use would be contrary to law or regulation or what would subject SISL or its affiliates to any registration or licensing requirement within such jurisdiction.

If this report is inadvertently sent or has reached any individual in such country, especially, USA, the same may be ignored and brought to the attention of the sender. This document may not be reproduced, distributed or published for any purposes without prior written approval of SISL.

Foreign currencies denominated securities, wherever mentioned, are subject to exchange rate fluctuations, which could have an adverse effect on their value or price, or the income derived from them. In addition, investors in securities such as ADRs, the values of which are influenced by foreign currencies effectively assume currency risk.

It should not be considered to be taken as an offer to sell or a solicitation to buy any security. SISL may from time to time solicit from, or perform broking, or other services for, any company mentioned in this mail and/or its attachments.

SISL and its affiliated company(ies), their directors and employees may; (a) from time to time, have a long or short position in, and buy or sell the securities of the company(ies) mentioned herein or (b) be engaged in any other transaction involving such securities and earn brokerage or other compensation or act as a market maker in the financial instruments of the company(ies) discussed herein or act as an advisor or lender/borrower to such company(ies) or may have any other potential conflict of interests with respect to any recommendation and other related information and opinions.

SISL, its directors, analysts or employees do not take any responsibility, financial or otherwise, of the losses or the damages sustained due to the investments made or any action taken on basis of this report, including but not restricted to, fluctuation in the prices of shares and bonds, changes in the currency rates, diminution in the NAVs, reduction in the dividend or income, etc.

SISL and other group companies, its directors, associates, employees may have various positions in any of the stocks, securities and financial instruments dealt in the report, or may make sell or purchase or other deals in these securities from time to time or may deal in other securities of the companies / organizations described in this report.

SISL or its associates might have managed or co-managed public offering of securities for the subject company or might have been mandated by the subject company for any other assignment in the past twelvemonths.

SISL or its associates might have received any compensation from the companies mentioned in the report during the period preceding twelve months from t date of this report for services in respect of managing orco-managing public offerings, corporate finance, investment banking or merchant banking, brokerage services or other advisory service in a merger or specific transaction in the normal course of business.

SISL or its analysts did not receive any compensation or other benefits from the companies mentioned in the report or third party in connection with preparation of the research report. Accordingly, neither SISL nor Research Analysts have any material conflict of interest at the time of publication of this report. Compensation of our Research Analysts is not based on any specific merchant banking, investment banking or brokerage service transactions. SISL may have issued other reports that are inconsistent with and reach different conclusion from the information presented in this report.