

Dated: 13-09-2020 20:48

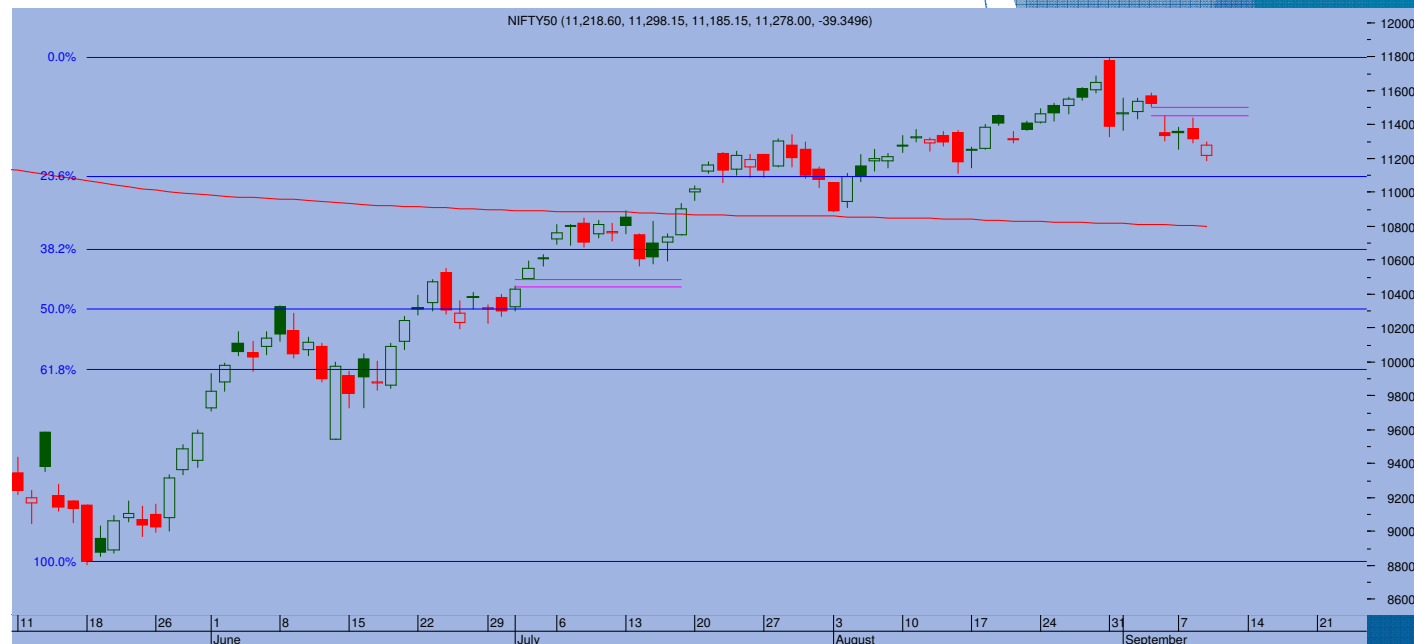
Top Trade

NIFTY - 11464

Sup 11420-1370 Res 11550-11600

BANKNIFTY - 22479

Sup 22200-22050 Res 22550-22700



- > Following strong gains over last two days, markets managed to hold onto the gains as Nifty ended the day at 11464, gaining 15 points.
- > On the weekly charts, Nifty managed a partial recovery through the week as it gained 130 points. After big slide previous week, bulls found a support near 11200 to pull back the markets slightly higher.
- > However, as explained earlier, the sharp reaction from the 11800 levels has opened up a corrective action, of which last 8 day move was its first leg . Over next few days as well, the markets may see an uptick as the recovery gains momentum. Above 11493, index is expected to get towards 11570 range which is 61.8% retracement level to the 8 day fall.
- > It remains to be seen whether the index manages to negotiate 11570 successfully or not but seems that positive bias will hold. Lower support is at 11430-11370

TRADE WHIZARD4

Scrip	B/S	Rate	S/L	Tgt1	Tgt2	Remarks
Bandhan Bank1 Fut	Buy	313	309	320	323	1 Day
Colgate1 Fut	Buy	1420	1400	1445	1460	1 Day
Manapuram1 Fu	Buy	158	155	162	165	1 Day

PIVOT POINTS

Security Name	CMP	Pivot	S1	S2	S3	R1	R2	R3	OI %
*BANKNIFTY 1	22539	22480	22285	22030	21835	22735	22930	23185	5.79
*NIFTY1 1	11467	11457	11426	11384	11354	11498	11529	11570	7.03
AXISBANK 1	449	446	443	437	433	452	456	462	0.82
BHARTIARTL 1	494	496	488	483	475	502	510	515	1.80
BPCL 1	429	430	422	416	408	436	444	451	2.98
HDFC 1	1771	1774	1759	1747	1732	1786	1800	1812	1.10
HDFC BANK - 1	1081	1086	1068	1055	1037	1099	1117	1130	2.60
HPCL 1	200	201	197	194	190	204	208	211	0.56
ICICI BANK - 1	372	371	367	362	359	375	379	384	1.42
INDUSINDBK 1	613	613	603	594	584	623	632	642	2.76
INFY1 1	946	944	934	922	912	956	967	979	3.02
KOTAKBANK 1	1330	1326	1316	1302	1292	1340	1350	1364	3.26
LT 1	918	918	912	906	900	924	930	935	4.15
MARUTI - 1	7222	7268	7159	7097	6989	7330	7439	7501	4.84
REL INDS 1	2320	2317	2294	2268	2245	2343	2366	2392	-4.47
SBI 1	204	202	199	194	192	206	209	214	2.34
TATASTEEL 1	409	408	404	399	394	413	418	423	-0.54
TCS - 1	2376	2365	2343	2311	2289	2397	2419	2451	1.00



Prepared by:
Nirav Vakharia, Head Research
Share India Securities Limited
14, Dayanand Vihar, 1 Kakardooma Metro Station, Delhi-110092
Email: research@shareindia.co.in
SEBI Research Analyst Reg no. INH100005011

Disclosure:

We, research team at Share India Securities Ltd. (SISL), authors and the names subscribed to this report, hereby certify that all of the views expressed in this research report accurately reflect our views about the subject issuer(s) or securities. SISL has no material adverse disciplinary history as on the date of publication of this report. We also certify that no part of our compensation was, is, or will be directly or indirectly related to the specific recommendation(s) or view(s) in this report.

Research Analyst or his/her relative or SISL may have any financial interest in the subject company. Also Research Analyst or his relative or SISL or its Associate may have beneficial ownership of 1% or more in the subject company at the end of the immediately preceding the date of publication of the Research Report. Further Research Analyst or his relative or SISL or its associate does not have any material conflict of interest.

SISL is a SEBI Registered Research Analyst having registration no. INH100005011.

Disclaimer:

This report has been prepared by SISL and is meant for sole use by the recipient and not for circulation. The information and opinions contained herein have been compiled or arrived at, based upon information obtained in good faith from sources believed to be reliable. Such information has not been independently verified and no guaranty, representation of warranty, express or implied, is made as to its accuracy, completeness or correctness. All such information and opinions are subject to change without notice. This document is for information purposes only. Descriptions of any company or companies or their securities mentioned herein are not intended to be complete and this document is not, and should not be construed as an offer or solicitation of an offer, to buy or sell any securities or other financial instruments.

This report is not directed to, or intended for display, downloading, printing, reproducing or for distribution to or use by, any person or entity who is a citizen or resident or located in any locality, state, country or other jurisdiction where such distribution, publication, reproduction, availability or use would be contrary to law or regulation or what would subject SISL or its affiliates to any registration or licensing requirement within such jurisdiction.

If this report is inadvertently sent or has reached any individual in such country, especially, USA, the same may be ignored and brought to the attention of the sender. This document may not be reproduced, distributed or published for any purposes without prior written approval of SISL.

Foreign currencies denominated securities, wherever mentioned, are subject to exchange rate fluctuations, which could have an adverse effect on their value or price, or the income derived from them. In addition, investors in securities such as ADRs, the values of which are influenced by foreign currencies effectively assume currency risk.

It should not be considered to be taken as an offer to sell or a solicitation to buy any security. SISL may from time to time solicit from, or perform broking, or other services for, any company mentioned in this mail and/or its attachments.

SISL and its affiliated company(ies), their directors and employees may; (a) from time to time, have a long or short position in, and buy or sell the securities of the company(ies) mentioned herein or (b) be engaged in any other transaction involving such securities and earn brokerage or other compensation or act as a market maker in the financial instruments of the company(ies) discussed herein or act as an advisor or lender/borrower to such company(ies) or may have any other potential conflict of interests with respect to any recommendation and other related information and opinions.

SISL, its directors, analysts or employees do not take any responsibility, financial or otherwise, of the losses or the damages sustained due to the investments made or any action taken on basis of this report, including but not restricted to, fluctuation in the prices of shares and bonds, changes in the currency rates, diminution in the NAVs, reduction in the dividend or income, etc.

SISL and other group companies, its directors, associates, employees may have various positions in any of the stocks, securities and financial instruments dealt in the report, or may make sell or purchase or other deals in these securities from time to time or may deal in other securities of the companies / organizations described in this report.

SISL or its associates might have managed or co-managed public offering of securities for the subject company or might have been mandated by the subject company for any other assignment in the past twelvemonths.

SISL or its associates might have received any compensation from the companies mentioned in the report during the period preceding twelve months from t date of this report for services in respect of managing or co-managing public offerings, corporate finance, investment banking or merchant banking, brokerage services or other advisory service in a merger or specific transaction in the normal course of business.

SISL or its analysts did not receive any compensation or other benefits from the companies mentioned in the report or third party in connection with preparation of the research report. Accordingly, neither SISL nor Research Analysts have any material conflict of interest at the time of publication of this report. Compensation of our Research Analysts is not based on any specific merchant banking, investment banking or brokerage service transactions. SISL may have issued other reports that are inconsistent with and reach different conclusion from the information presented in this report.