

Dated: 09-09-2020 21:53

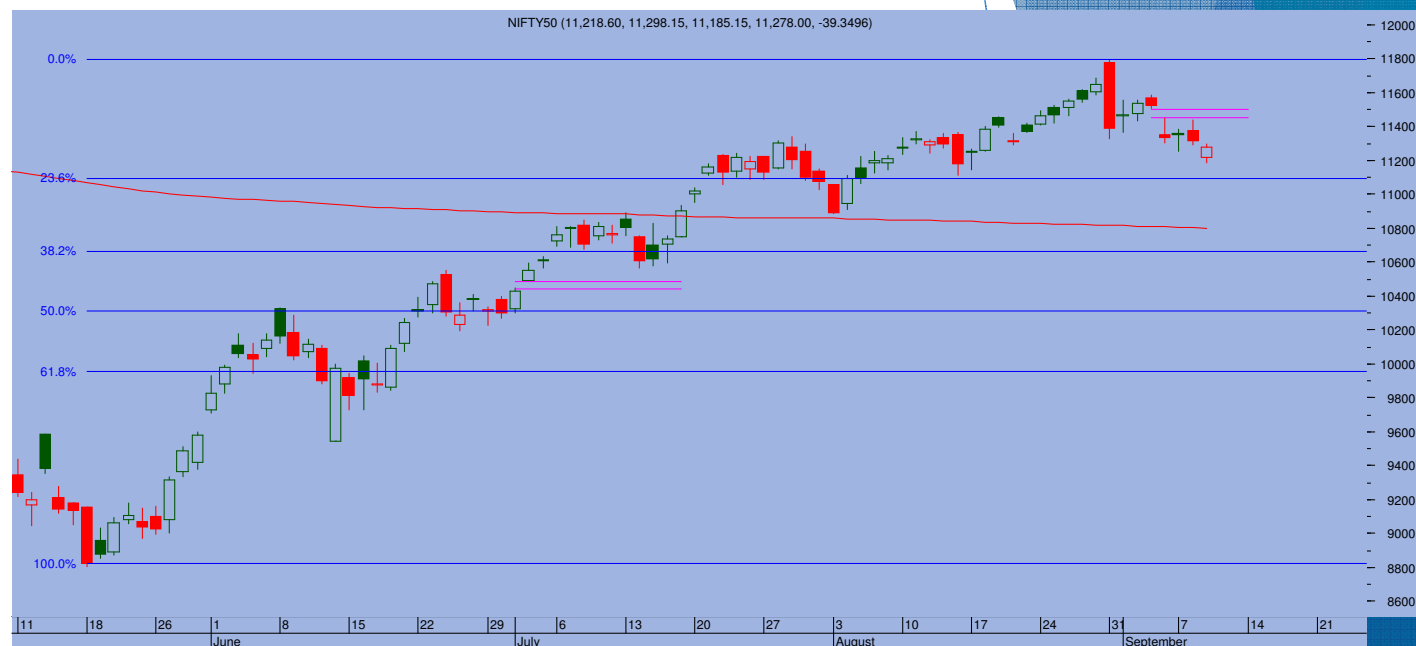
Top Trade

NIFTY - 11278

Sup 11185-11100 Res 11350-11420

BANKNIFTY - 22267

Sup 22100-21900 Res 22400-22550



- > Amid volatility and few swings, Nifty managed to bounce back off the days low to end above today's gap down opening level, losing 39 pts to end at 11278,
- > So, Nifty dipped below 11200 during intraday volatility but managed to recover strongly, forming a white body candle. The absence of any large trigger and outstanding positions is helping the market in showing resilience at lower levels. Today's action can help markets to show a minor bounce back over next couple of days. (It seems that after a brief recovery, next leg of correction can happen when the situation along China border deteriorates. Till then calmness should prevail)
- > Nifty would still need to recover past 11350 to show further recovery. Next resistance is at 11450
- > Although the bias is positive for tomorrow, but if the index fails to sustain past 11300 and in-fact violates today's low, a sharp move towards 11000 even may not be ruled out.

TRADE WHIZARD4

Scrip	B/S	Rate	S/L	Tgt1	Tgt2	Remarks
TCS1 Fut	Buy	2336	2310	2380	2400	1 Day
Berger Paint1 Fut	Buy	565	558	574	578	1 Day
Biocon1 Fut	Buy	430	425	436	440	1 Day

PIVOT POINTS

Security Name	CMP	Pivot	S1	S2	S3	R1	R2	R3	OI %
*BANKNIFTY 1	22337	22347	22119	21901	21673	22565	22793	23011	3.30
*NIFTY1 1	11307	11278	11231	11156	11109	11353	11400	11475	-6.26
AXISBANK 1	433	435	425	416	406	443	453	462	8.75
BHARTIARTL 1	507	503	497	487	481	513	519	529	-1.81
BPCL 1	408	406	401	395	390	413	417	424	3.51
HDFC 1	1765	1769	1755	1745	1731	1779	1793	1803	-1.29
HDFC BANK - 1	1098	1099	1090	1083	1074	1106	1114	1122	-1.49
HPCL 1	195	195	191	187	183	199	203	207	1.58
ICICI BANK - 1	369	369	364	359	354	374	379	384	2.02
INDUSINDBK 1	607	603	594	581	572	616	625	638	-1.29
INFY1 1	932	936	926	919	909	943	953	960	-1.90
KOTAKBANK 1	1330	1332	1314	1298	1280	1347	1365	1381	-1.17
LT 1	914	916	902	890	877	927	941	953	0.39
MARUTI - 1	7249	7232	7168	7087	7023	7313	7377	7458	-2.02
REL INDS 1	2169	2144	2114	2059	2029	2199	2228	2284	-0.33
SBI 1	196	197	192	188	184	201	205	209	3.97
TATASTEEL 1	420	410	397	375	362	432	444	467	5.28
TCS - 1	2336	2343	2320	2305	2283	2358	2380	2396	-1.84



Prepared by:
Nirav Vakharia, Head Research
Share India Securities Limited
14, Dayanand Vihar, 1 Kakardooma Metro Station, Delhi-110092
Email: research@shareindia.co.in
SEBI Research Analyst Reg no. INH100005011

Disclosure:

We, research team at Share India Securities Ltd. (SISL), authors and the names subscribed to this report, hereby certify that all of the views expressed in this research report accurately reflect our views about the subject issuer(s) or securities. SISL has no material adverse disciplinary history as on the date of publication of this report. We also certify that no part of our compensation was, is, or will be directly or indirectly related to the specific recommendation(s) or view(s) in this report.

Research Analyst or his/her relative or SISL may have any financial interest in the subject company. Also Research Analyst or his relative or SISL or its Associate may have beneficial ownership of 1% or more in the subject company at the end of the immediately preceding the date of publication of the Research Report. Further Research Analyst or his relative or SISL or its associate does not have any material conflict of interest.

SISL is a SEBI Registered Research Analyst having registration no. INH100005011.

Disclaimer:

This report has been prepared by SISL and is meant for sole use by the recipient and not for circulation. The information and opinions contained herein have been compiled or arrived at, based upon information obtained in good faith from sources believed to be reliable. Such information has not been independently verified and no guaranty, representation of warranty, express or implied, is made as to its accuracy, completeness or correctness. All such information and opinions are subject to change without notice. This document is for information purposes only. Descriptions of any company or companies or their securities mentioned herein are not intended to be complete and this document is not, and should not be construed as an offer or solicitation of an offer, to buy or sell any securities or other financial instruments.

This report is not directed to, or intended for display, downloading, printing, reproducing or for distribution to or use by, any person or entity who is a citizen or resident or located in any locality, state, country or other jurisdiction where such distribution, publication, reproduction, availability or use would be contrary to law or regulation or what would subject SISL or its affiliates to any registration or licensing requirement within such jurisdiction.

If this report is inadvertently sent or has reached any individual in such country, especially, USA, the same may be ignored and brought to the attention of the sender. This document may not be reproduced, distributed or published for any purposes without prior written approval of SISL.

Foreign currencies denominated securities, wherever mentioned, are subject to exchange rate fluctuations, which could have an adverse effect on their value or price, or the income derived from them. In addition, investors in securities such as ADRs, the values of which are influenced by foreign currencies effectively assume currency risk.

It should not be considered to be taken as an offer to sell or a solicitation to buy any security. SISL may from time to time solicit from, or perform broking, or other services for, any company mentioned in this mail and/or its attachments.

SISL and its affiliated company(ies), their directors and employees may; (a) from time to time, have a long or short position in, and buy or sell the securities of the company(ies) mentioned herein or (b) be engaged in any other transaction involving such securities and earn brokerage or other compensation or act as a market maker in the financial instruments of the company(ies) discussed herein or act as an advisor or lender/borrower to such company(ies) or may have any other potential conflict of interests with respect to any recommendation and other related information and opinions.

SISL, its directors, analysts or employees do not take any responsibility, financial or otherwise, of the losses or the damages sustained due to the investments made or any action taken on basis of this report, including but not restricted to, fluctuation in the prices of shares and bonds, changes in the currency rates, diminution in the NAVs, reduction in the dividend or income, etc.

SISL and other group companies, its directors, associates, employees may have various positions in any of the stocks, securities and financial instruments dealt in the report, or may make sell or purchase or other deals in these securities from time to time or may deal in other securities of the companies / organizations described in this report.

SISL or its associates might have managed or co-managed public offering of securities for the subject company or might have been mandated by the subject company for any other assignment in the past twelvemonths.

SISL or its associates might have received any compensation from the companies mentioned in the report during the period preceding twelve months from t date of this report for services in respect of managing orco-managing public offerings, corporate finance, investment banking or merchant banking, brokerage services or other advisory service in a merger or specific transaction in the normal course of business.

SISL or its analysts did not receive any compensation or other benefits from the companies mentioned in the report or third party in connection with preparation of the research report. Accordingly, neither SISL nor Research Analysts have any material conflict of interest at the time of publication of this report. Compensation of our Research Analysts is not based on any specific merchant banking, investment banking or brokerage service transactions. SISL may have issued other reports that are inconsistent with and reach different conclusion from the information presented in this report.