

Dated: 27-08-2020 21:13

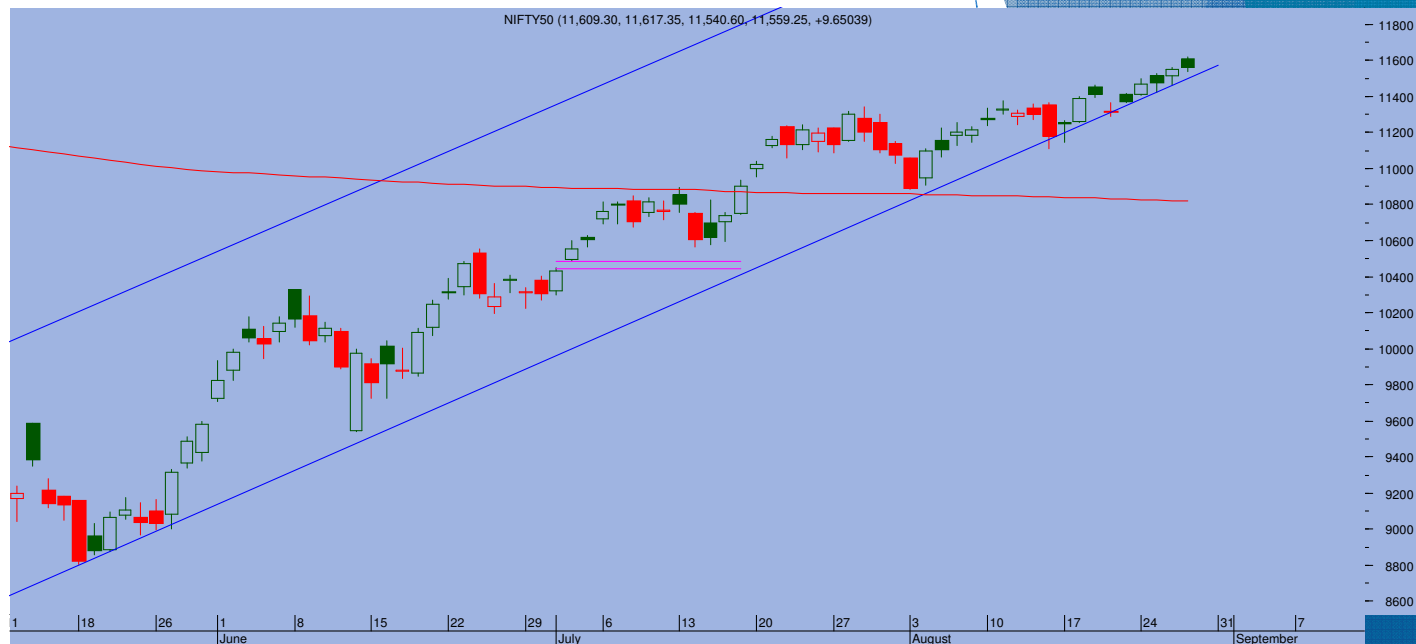
Top Trade

NIFTY - 11559

Sup 11410-11300 Res 11495-11550

BNKNIFTY - 23600

Sup 23450-23200 Res 23650-23850



- > Markets witnessed a bit of choppiness despite Nifty and Bank Nifty zooming higher. However, last hour selling due to settlement related positions offloading, Nifty ended at 11559, gaining just 10 points
- > Though Nifty has gained considerable ground over last few days, it seems that somewhere down the line, Nifty bulls are not too confident at this point and exhausting themselves. It is still perilously close the lower trendline support. Even a minor push below the support could throw open some corrective moves
- > It seems that next week could be very crucial in deciding the way ahead. For tomorrow, 11500 is a crucial support. If it gets violated 11410 is expected to play an important role in overall structure. Its violation will result into further downswings
- > On the higher side, Nifty needs some big moves and cross 11663-11700 level

TRADE WHIZARD4

Scrip	B/S	Rate	S/L	Tgt1	Tgt2	Remarks
Axis Bank1 Fut	Buy	474	468	485	490	1 Day
Bata1 Fut	Buy	1355	1340	1375	1380	1 day
Glenmark1 Fut	Buy	500	495	507	510	1 Day

PIVOT POINTS

Security Name	CMP	Pivot	S1	S2	S3	R1	R2	R3	OI %
*BANKNIFTY 1	23611	23600	23485	23358	23242	23727	23843	23970	NA
*NIFTY1 1	11561	11572	11536	11511	11475	11597	11633	11658	NA
AXISBANK 1	473	471	466	459	455	478	482	489	NA
BHARTIARTL 1	511	513	507	503	497	516	522	526	NA
BPCL 1	413	414	409	404	398	419	424	429	NA
HDFC 1	1864	1858	1834	1804	1780	1888	1912	1942	NA
HDFC BANK - 1	1112	1115	1103	1094	1081	1125	1137	1147	NA
HPCL 1	208	209	207	205	203	211	213	215	NA
ICICI BANK – 1	391	392	387	383	378	396	401	405	NA
INDUSINDBK 1	606	599	578	551	530	627	647	675	NA
INFY1 1	948	952	942	936	926	958	967	973	NA
KOTAKBANK 1	1420	1425	1406	1391	1372	1440	1460	1474	NA
LT 1	974	973	966	957	950	981	989	997	NA
MARUTI – 1	7106	7072	7009	6912	6849	7169	7232	7329	NA
REL INDS 1	2107	2118	2084	2061	2026	2142	2176	2200	NA
SBI 1	216	214	212	208	206	218	220	224	NA
TATASTEEL 1	427	427	424	420	416	431	434	438	NA
TCS - 1	2246	2258	2230	2214	2186	2274	2302	2318	NA



Prepared by:
Nirav Vakharia, Head Research
Share India Securities Limited
14, Dayanand Vihar, 1 Kakardooma Metro Station, Delhi-110092
Email: research@shareindia.co.in
SEBI Research Analyst Reg no. INH100005011

Disclosure:

We, research team at Share India Securities Ltd. (SISL), authors and the names subscribed to this report, hereby certify that all of the views expressed in this research report accurately reflect our views about the subject issuer(s) or securities. SISL has no material adverse disciplinary history as on the date of publication of this report. We also certify that no part of our compensation was, is, or will be directly or indirectly related to the specific recommendation(s) or view(s) in this report.

Research Analyst or his/her relative or SISL may have any financial interest in the subject company. Also Research Analyst or his relative or SISL or its Associate may have beneficial ownership of 1% or more in the subject company at the end of the immediately preceding the date of publication of the Research Report. Further Research Analyst or his relative or SISL or its associate does not have any material conflict of interest.

SISL is a SEBI Registered Research Analyst having registration no. INH100005011.

Disclaimer:

This report has been prepared by SISL and is meant for sole use by the recipient and not for circulation. The information and opinions contained herein have been compiled or arrived at, based upon information obtained in good faith from sources believed to be reliable. Such information has not been independently verified and no guaranty, representation of warranty, express or implied, is made as to its accuracy, completeness or correctness. All such information and opinions are subject to change without notice. This document is for information purposes only. Descriptions of any company or companies or their securities mentioned herein are not intended to be complete and this document is not, and should not be construed as an offer or solicitation of an offer, to buy or sell any securities or other financial instruments.

This report is not directed to, or intended for display, downloading, printing, reproducing or for distribution to or use by, any person or entity who is a citizen or resident or located in any locality, state, country or other jurisdiction where such distribution, publication, reproduction, availability or use would be contrary to law or regulation or what would subject SISL or its affiliates to any registration or licensing requirement within such jurisdiction.

If this report is inadvertently sent or has reached any individual in such country, especially, USA, the same may be ignored and brought to the attention of the sender. This document may not be reproduced, distributed or published for any purposes without prior written approval of SISL.

Foreign currencies denominated securities, wherever mentioned, are subject to exchange rate fluctuations, which could have an adverse effect on their value or price, or the income derived from them. In addition, investors in securities such as ADRs, the values of which are influenced by foreign currencies effectively assume currency risk.

It should not be considered to be taken as an offer to sell or a solicitation to buy any security. SISL may from time to time solicit from, or perform broking, or other services for, any company mentioned in this mail and/or its attachments.

SISL and its affiliated company(ies), their directors and employees may; (a) from time to time, have a long or short position in, and buy or sell the securities of the company(ies) mentioned herein or (b) be engaged in any other transaction involving such securities and earn brokerage or other compensation or act as a market maker in the financial instruments of the company(ies) discussed herein or act as an advisor or lender/borrower to such company(ies) or may have any other potential conflict of interests with respect to any recommendation and other related information and opinions.

SISL, its directors, analysts or employees do not take any responsibility, financial or otherwise, of the losses or the damages sustained due to the investments made or any action taken on basis of this report, including but not restricted to, fluctuation in the prices of shares and bonds, changes in the currency rates, diminution in the NAVs, reduction in the dividend or income, etc.

SISL and other group companies, its directors, associates, employees may have various positions in any of the stocks, securities and financial instruments dealt in the report, or may make sell or purchase or other deals in these securities from time to time or may deal in other securities of the companies / organizations described in this report.

SISL or its associates might have managed or co-managed public offering of securities for the subject company or might have been mandated by the subject company for any other assignment in the past twelvemonths.

SISL or its associates might have received any compensation from the companies mentioned in the report during the period preceding twelve months from t date of this report for services in respect of managing orco-managing public offerings, corporate finance, investment banking or merchant banking, brokerage services or other advisory service in a merger or specific transaction in the normal course of business.

SISL or its analysts did not receive any compensation or other benefits from the companies mentioned in the report or third party in connection with preparation of the research report. Accordingly, neither SISL nor Research Analysts have any material conflict of interest at the time of publication of this report. Compensation of our Research Analysts is not based on any specific merchant banking, investment banking or brokerage service transactions. SISL may have issued other reports that are inconsistent with and reach different conclusion from the information presented in this report.