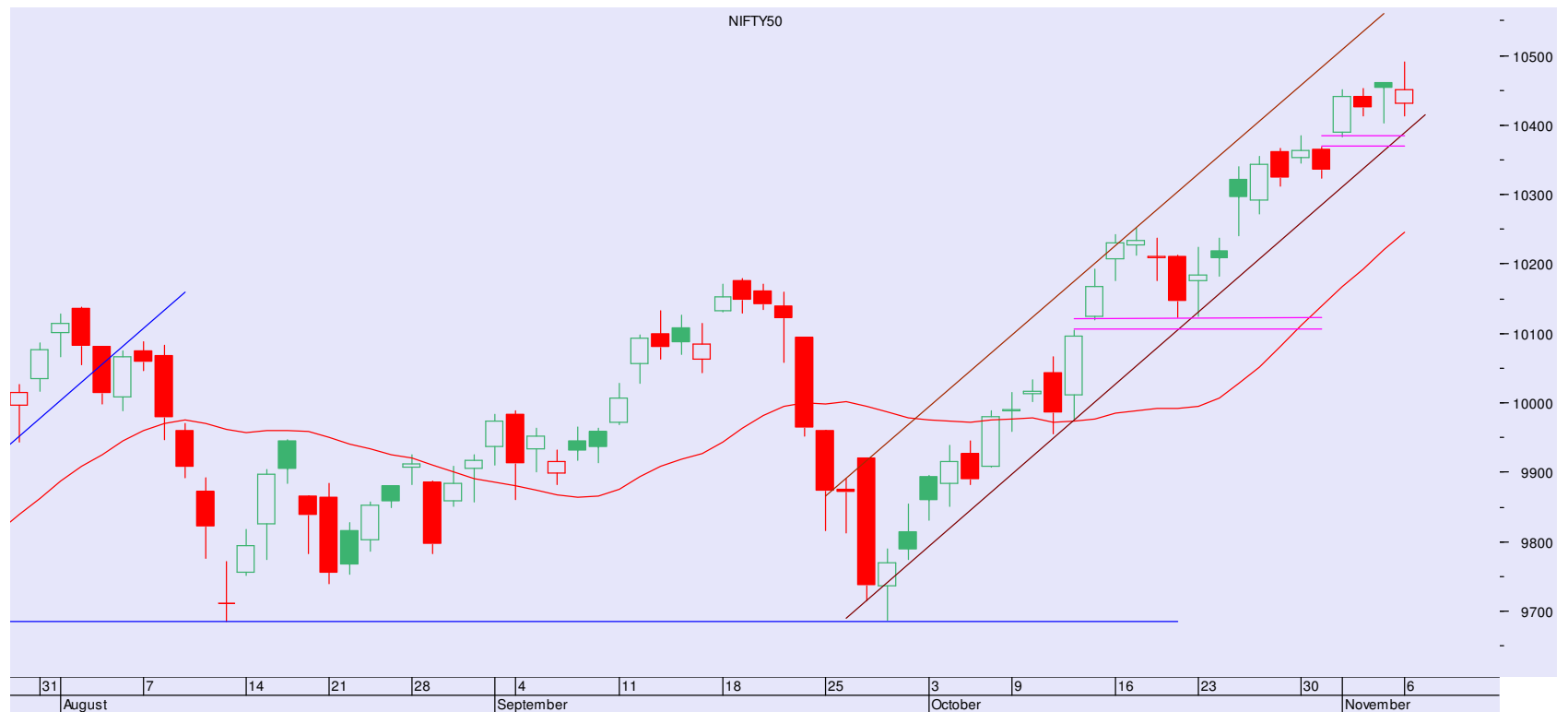


Date: 06-11-2017 18:39

NIFTY 10451 (-1)

Despite hitting fresh highs, markets were pulled back off the highs as profit booking appeared at higher levels. Nifty initially opened lower but managed to hit high of 10490. However, struggling to hold onto the higher range, it pulled back to end flat.

On Friday, the index had formed a Hanging Man pattern on the daily charts. It was followed up by an upper shadow reflecting the selling pressure at higher levels. 10500 is the immediate resistance level which the index tested today and reacted marginally. It seems the index may continue to trade sideways over next few days as it takes a pause following strong gains in recent times. On the lower side, 10400-10367 is immediate support range. Any violation could push the index towards 10250 levels.



PIVOT TABLE

SCRIP	Close	Pivot	S1	S2	S3	R1	R2	R3	% OI Change
BANKNIFTY1	25619	25630	25545	25472	25387	25704	25789	25862	6.58
NIFTY1	10490	10487	10444	10399	10356	10533	10576	10621	0.64
AXISBANK1	534	535	529	523	518	540	546	552	-1.74
BAJFINANCE1	1830	1833	1815	1800	1781	1848	1867	1882	-1.17
DHFL1	646	655	635	623	603	667	687	699	8.80
DLF1	216	216	214	211	209	218	220	223	-1.82
HDFC1	1795	1788	1772	1749	1733	1811	1827	1849	-0.39
HDFCBANK1	1835	1833	1827	1819	1812	1841	1847	1855	-1.43
HINDALCO1	273	270	266	258	253	278	283	291	0.27
IBULHSGFIN1	1232	1234	1218	1204	1187	1248	1265	1279	-0.37
ICICIBANK1	315	315	311	307	302	320	324	328	2.27
INDUSINDBK1	1653	1656	1647	1641	1632	1662	1670	1677	1.26
ITC1	267	267	265	264	262	268	270	271	2.59
RELIANCE1	938	940	933	928	921	945	952	956	-0.34
SBIN1	329	327	324	320	317	332	334	339	-1.04
TATASTEEL1	711	712	703	694	685	720	729	738	0.82
VEDL1	341	340	335	328	323	346	351	357	0.30
YESBANK1	321	324	317	314	307	327	334	337	0.65

TRADE WIZARD

SCRIP	B/S	CMP	S/L	Tgt 1	Tgt 2	Remarks
Yes Bank	Sell	320	327	310	305	1 days
TCS	Buy	2665	2630	2710	2730	1 day
Bosch	Sell	20860	21000	20500	20400	2 day

Share India Securities Limited
14, Dayanand Vihar, Near Kakardooma Metro Station,
Delhi-110092
research@shareindia.co.in
SEBI Research Analyst Reg no. INH100005011

Disclosure:

We, research team at Share India Securities Ltd. (SISL), authors and the names subscribed to this report, hereby certify that all of the views expressed in this research report accurately reflect our views about the subject issuer(s) or securities. SISL has no material adverse disciplinary history as on the date of publication of this report. We also certify that no part of our compensation was, is, or will be directly or indirectly related to the specific recommendation(s) or view(s) in this report.

Research Analyst or his/her relative or SISL may have any financial interest in the subject company. Also Research Analyst or his relative or SISL or its Associate may have beneficial ownership of 1% or more in the subject company at the end of the month immediately preceding the date of publication of the Research Report. Further Research Analyst or his relative or SISL or its associate does not have any material conflict of interest.

SISL is a SEBI Registered Research Analyst having registration no. INH100005011.

Disclaimer:

This report has been prepared by SISL and is meant for sole use by the recipient and not for circulation. The information and opinions contained herein have been compiled or arrived at, based upon information obtained in good faith from sources believed to be reliable. Such information has not been independently verified and no guaranty, representation of warranty, express or implied, is made as to its accuracy, completeness or correctness. All such information and opinions are subject to change without notice. This document is for information purposes only. Descriptions of any company or companies or their securities mentioned herein are not intended to be complete and this document is not, and should not be construed as an offer or solicitation of an offer, to buy or sell any securities or other financial instruments.

This report is not directed to, or intended for display, downloading, printing, reproducing or for distribution to or use by, any person or entity who is a citizen or resident or located in any locality, state, country or other jurisdiction where such distribution, publication, reproduction, availability or use would be contrary to law or regulation or what would subject SISL or its affiliates to any registration or licensing requirement within such jurisdiction.

If this report is inadvertently sent or has reached any individual in such country, especially, USA, the same may be ignored and brought to the attention of the sender. This document may not be reproduced, distributed or published for any purposes without prior written approval of SISL.

Foreign currencies denominated securities, wherever mentioned, are subject to exchange rate fluctuations, which could have an adverse effect on their value or price, or the income derived from them. In addition, investors in securities such as ADRs, the values of which are influenced by foreign currencies effectively assume currency risk.

It should not be considered to be taken as an offer to sell or a solicitation to buy any security. SISL may from time to time solicit from, or perform broking, or other services for, any company mentioned in this mail and/or its attachments.

SISL and its affiliated company(ies), their directors and employees may; (a) from time to time, have a long or short position in, and buy or sell the securities of the company(ies) mentioned herein or (b) be engaged in any other transaction involving such securities and earn brokerage or other compensation or act as a market maker in the financial instruments of the company(ies) discussed herein or act as an advisor or lender/borrower to such company(ies) or may have any other potential conflict of interests with respect to any recommendation and other related information and opinions.

SISL, its directors, analysts or employees do not take any responsibility, financial or otherwise, of the losses or the damages sustained due to the investments made or any action taken on basis of this report, including but not restricted to, fluctuation in the prices of shares and bonds, changes in the currency rates, diminution in the NAVs, reduction in the dividend or income, etc.

SISL and other group companies, its directors, associates, employees may have various positions in any of the stocks, securities and financial instruments dealt in the report, or may make sell or purchase or other deals in these securities from time to time or may deal in other securities of the companies / organizations described in this report.

SISL or its associates might have managed or co-managed public offering of securities for the subject company or might have been mandated by the subject company for any other assignment in the past twelve months.

SISL or its associates might have received any compensation from the companies mentioned in the report during the period preceding twelve months from the date of this report for services in respect of managing or co-managing public offerings, corporate finance, investment banking or merchant banking, brokerage services or other advisory service in a merger or specific transaction in the normal course of business.

SISL or its analysts did not receive any compensation or other benefits from the companies mentioned in the report or third party in connection with preparation of the research report. Accordingly, neither SISL nor Research Analysts have any material conflict of interest at the time of publication of this report. Compensation of our Research Analysts is not based on any specific merchant banking, investment banking or brokerage service transactions. SISL may have issued other reports that are inconsistent with and reach different conclusion from the information presented in this report.

Research entity has not been engaged in market making activity for the subject company. Research analyst has not served as an officer, director or employee of the subject company. We have not received any compensation/benefits from the subject company or third party in connection with the Research Report.