



## Weekly Research Reports

**Disclosures and Disclaimer :** This report must be read with the disclosures in the Disclosure appendix, and with the Disclaimer, which forms part of it. This document does not contain any investment views or opinions. The Registration Number of the Research Analyst is : INH100005011

[www.shareindia.com](http://www.shareindia.com)



# CONTENTS

<b>Title</b>	<b>Page No.</b>
Share India (Wealth Weekly)	03-04
Top Sectors for the Week	05-15
Weekly Pivot Table (Equities)	16
Weekly Pivot Table (Commodities)	17
Disclaimer	18



## WEALTH WEEKLY

**Share India Wealth Weekly...** Getting rich is easy with help of Share India Wealth Weekly.

This weekly research report helps you to identify the best five momentum stocks for the week. 'Pick of the week' is best among the mentioned five and is always with detailed 'Technical & Macro outlook'.

The trick to "Get Rich quickly and to Stay Rich forever" is a combination of alertness and awareness. With the right information on stocks from Excel Stock Wealth Weekly, your money is likely to grow confidently and living the "rich" life, is achievable.



**You generate, we multiply**

[www.shareindia.com](http://www.shareindia.com)

STOCKS	CMP	BIAS	TRADING/ INVESTMENT STRATEGY
AVANTI FEEDS	654	Positive	<b>Avanti Feeds</b> is the leading manufacturer of shrimp feeds and Shrimp Processor with a capacity of 7,75,000 MT, and Shrimp Processor & Exporter with a capacity of 22,000 MT. The firm also commands a 45% market share in domestic shrimp feed market. The firm was incorporated in the year 1993 and is now having a market cap of Rs 8917 Crores. The firm reported 53.11% jump in consolidated net profit to Rs 113.65 crore on 5.99% increase in revenue from operations to Rs 1,355.09 crore in Q2 FY25 over Q2 FY24. On segmental front, revenue from shrimp feed was Rs 1,075.20 crore (up 4.42% YoY), processed shrimp stood at Rs 275.77 crore (up 12.41% YoY) and shrimp hatchery was at Rs 3.42 crore (up 5.88% YoY) during the quarter. <b>A potential entrance exists at CMP, and on dips between 525-550 zone, targeting 709/793 mark and then aggressive targets at 981 mark. Stop below 497.</b>
BIOCON	394	Positive	Incorporated in the year 1978, <b>Biocon Ltd.</b> is an Indian biopharmaceutical company focused on manufacturing innovative biotechnology products and providing research services and caters in discovering, developing and producing biologics in chronic therapies for chronic conditions like diabetes, cancer and autoimmune. The company operates through several business segments, including Biosimilars, Research Services, Generics, and Novel Biologics. The stock is in limelight after USFDA clears Malaysia unit. The US FDA has classified Biocon Biologics' insulin facilities in Johor Bahru, Malaysia, as Voluntary Action Indicated (VAI), paving the way for the company to proceed with product filings from the site. <b>Look to accumulate at CMP, and on dips between 350-365 zone, targeting 425 and then aggressive targets at 475 with stop below 319. Holding Period: 12 months.</b>
NATIONAL ALUMINUM	206	Positive	Incorporated in 1981, <b>National Aluminium Company Limited (NALCO)</b> , a 'Navratna' company is one of the country's largest bauxite, alumina, aluminium and power complex. Currently, the Indian government owns 51.28% of NALCO's equity capital. NALCO reported impressive results in the 2nd quarter ended Sept 30th for FY 2024-25 with a 415.4% year-on-year (YoY) jump in net profit at Rs 1,062.2 crore for the second quarter that ended September 30, 2024. Its revenue from operations surged 31.5% to Rs 4,001.5 crore against Rs 3,043.8 crore in the year-ago period. Technically, the recent sequence of higher high/low is still intact in all time frames with a probable bullish Piercing Pattern on the weekly charts. <b>Establishing long positions at CMP and on any corrective declines between 185-190 zone should be the preferred trading strategy, targeting 233/261 zone and then aggressive targets seen at 289 zone. Stop below 179. Holding Period: 9-12 Months.</b>
NTPC	326	Positive	Incorporated in the year 1975, <b>NTPC</b> is India's largest power generation company in India and contributes 25% of total power generation of India as of December 31, 2024. The focus will be more on renewable/clean energy. NTPC is likely to benefit from the upcoming investments in the power sector given its robust thermal portfolio. NTPC's Robust Thermal Assets also provide Cash Flow visibility. NTPC has also advantage as it can mobilise funds at a lower cost of debt to private peers puts it in a competitive position. Furthermore, Considering a thrust on renewables and simultaneous enhancement of thermal capacity. We believe NTPC is a good portfolio bet given its stable dividend yield, and a further rerating potential could be on cards India clocked record renewable energy growth in 2024. India's renewable energy capacity more than doubled in 2024, increasing by an impressive 113 percent YoY to 30 GW. <b>Simply buy at CMP, and on dips between 290-300 zone, targeting 356/381 mark and then at 403-425 zone. Stop below 283. Holding Period: 9-12 Months.</b>
TEJAS NETWORKS	1059	Positive	<b>Tejas Networks Ltd</b> is India's largest R&D-driven telecom equipment company and designs, manufactures and sells leading-edge telecom products used by communication service providers, utilities, defence and government entities in over 75 countries. The company has a full range of products for building end-to-end networks including wireless (4G/5G), optical transmission (DWDM, OTN) and packet switching (Ethernet, IP/MPLS) that can be managed by a universal, multi-technology network management system. The company is a top-10 global supplier in the optical aggregation and broadband access segments, has filed 440+ patents and is ranked amongst Top-3 listed companies in India, in terms of percentage of revenues spent on R&D. Tejas Networks is a part of the Tata Group. <b>Preferred Strategy: Look to accumulate at CMP, targeting 1251/1500 and then aggressive targets at 1495 with stop below 907. Holding Period: 12-15 months.</b>

## Analyst's Pick: Buy NALCO (CMP 206. Target: 251)

Incorporated in 1981, **National Aluminium Company Limited (NALCO)**, a 'Navratna' company is one of the country's largest bauxite, alumina, aluminium and power complex. Currently, the Indian government owns 51.28% of NALCO's equity capital. The Company has been operating its captive Panchpatmali Bauxite Mines for the pit head Alumina refinery at Damanjodi, in the District of Koraput in Odisha and Aluminium Smelter & Captive Power Plant at Angul.

The Company has a 68.25 lakh TPA Bauxite Mine & 21.00 lakh TPA (normative capacity) Alumina Refinery located at Damanjodi in Koraput district of Odisha, and 4.60 lakh TPA Aluminium Smelter & 1200MW Captive Power Plant located at Angul, Odisha.

The Company has regional sales offices in Delhi, Kolkata, Mumbai, Chennai and 7 operating stockyards at various locations in the Country to facilitate domestic consumers. In addition, NALCO has its own bulk shipment facility for export of products.

As a part of green initiative, NALCO has installed 198 MW Wind Power Plants at various locations in India and 850 kWp roof top Solar Power Plants at its premises to join hands for carbon neutrality. From the days of first commercial operation in 1987, the Company has continuously earned profits for last 37 years. NALCO is one of the leading foreign exchange earning CPSEs of the Country. The Company continues to retain its position of lowest cost producer in Bauxite and Alumina production in the World.

NALCO posted an impressive 415% growth in net profit for the quarter ended September 2024 at Rs. 1062 crore, compared to Rs. 206 crore achieved during corresponding period of last year. The total income of the company during the quarter from operations stood at Rs.4001 crore, registering 32 percent growth over Q2 of FY 23-24, which was Rs. 3044 crore.

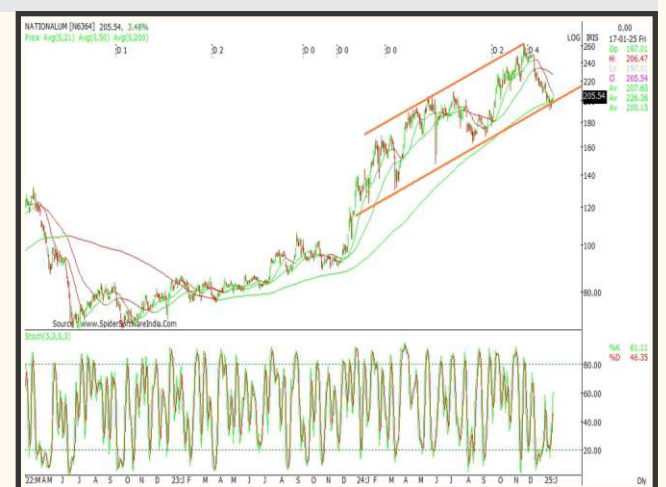
Driven by its corporate plan, the Company is having well carved plans for expansion programs. Presently, the Company is working in major projects like:

1. 5th stream Alumina Refinery, which will enhance the Refinery capacity from 2.1 million tonne to 3.1 million tonne.
2. To support the Alumina Refinery and raw material security, the Company is developing Pottangi bauxite Mines and for which mining leases deed already signed; the mines is expected to be opened shortly. Utkal D & E Coal Mines: Mining activities already started. It is adding to the bottom line by reduction in coal procurement cost. For Utkal-E, all clearances are in advance stage.
3. As part of backward integration, the Company has established a caustic soda plant in JV with Gujarat Alkalies & Chemicals Limited (GACL) in Gujarat. Production already started since 2022.

Technically, the sequence of higher high/low is still intact in all time frames with bullish a probable bullish Piercing pattern rebound on the weekly charts. The momentum oscillators are clearly seen on the buy side signalling further sharp up move —Immediate upside targets are at psychological 250 mark.

The 200-DMA of the stock is around 200 levels and will act as major support.

**Establishing long positions at CMP and on any corrective declines between 185-190 zone should be the preferred trading strategy, targeting 233/251 zone and then aggressive targets seen at 289 zone. Stop below 179. Holding Period: 9-12 Months.**



## TOP SECTOR OF THE WEEK

**Top Sectors for the Week** is a Technical and Macro report containing everything you need to have...a clear, precise and detailed view on the five top momentum sectors... listed in BSE. This detailed multi-analyzed Macro-Technical report is a smart way to enter or exit an outperforming or underperforming sector using the relative strength function.

Top Sectors for the Week reports have an unbeatable track record...You can look out for our previous reports at our website [www.shareindia.com](http://www.shareindia.com)



## Sector Analysis: Relative Strength Performance

Sectors	Relative to Nifty...	Outperforming stocks	Underperforming stocks
Nifty Auto Index	NEUTRAL	MARUTI, TVS MOTORS, TATA MOTORS	BHARAT FORGE, HEROMOTO CORP, BOSCH, BALKRISHNA INDUSTRIES
Bank Nifty Index	UNDERPERFORM	ICICI BANK	AU BANK, IDFC FIRST BANK, BANDHAN BANK, KOTAK BANK
Nifty IT Index	NEUTRAL	LTTS	INFY, WIPRO
Nifty Pharma Index	NEUTRAL	SUN PHARMA, BIOCON, SYNGENE	GLENMARK, GRANULES,
Nifty Metals Index	OUTPERFORM	HINDALCO, NALCO, JINDAL STEEL, JSW STEEL	SAIL, NMDC

## From Share India Research Desk...

### \*The Week That Was\*

January 13th 2025 to January 17th 2025.

**# In the week gone by, Wall Street was zooming higher as President-elect Donald Trump was getting ready to take office and take forward the booming US economy.**

Having said that, Nifty and its stocks sobbed, indicating Dalal Street is not yet fully prepared for the potential fallout from proposed Trump tariffs.

**Nifty (-0.97%, 23203)**

**Sensex (-0.98%, 76619)**

# As we record, cautiousness was seen building at Dalal Street ahead of the second Trump administration to take office on January 20th.

### # The 3-big negative catalysts hurting Nifty and its stocks:

- 1) Record exodus from the Foreign Institutional Investors continues to the biggest headwind. (This January so far, they have sold to the tune of Rs. 46,576.20 crores).
- 2) The Indian Rupee hit a new record closing low at 86.68 primarily pressured by a firm dollar. (Weak Rupee makes Indian stock markets less attractive to foreign investors and raises inflation fears).
- 3) The negative takeaway from last week's trade was that the Nifty ended way below its November 2024 low.

Technically speaking, from here on, any move below psychological Nifty 23000, the next inter-month supports are placed at 21281 mark (June 4th Election day low).

# **Long story short:** Nifty is still unable to come out of the woods.

### Weekly Recap:

Instruments	LTP	Weekly % Change
Nifty	23203	<span style="color: red;">(-0.97%)</span>
Sensex	76619	<span style="color: red;">(-0.98%)</span>
Bank Nifty	48541	<span style="color: red;">(-0.40%)</span>
Nifty Midcap	15140	<span style="color: red;">(-0.83%)</span>
India VIX	15.75	<span style="color: green;">+5.58%</span>
Dow Jones	43550	<span style="color: green;">+3.86%</span>
Nasdaq	21451	<span style="color: green;">+2.87%</span>
Bovespa	122333	<span style="color: green;">+1.28%</span>
Crude Oil	77.87	<span style="color: green;">+1.70%</span>
Gold	2715	<span style="color: green;">+1.10%</span>
Silver	30.36	<span style="color: red;">(-0.05%)</span>
USD/INR	86.56	<span style="color: green;">+0.43%</span>

### # Here are how indices performed in the week gone by:

- 1) Nifty mostly traded with negative bias, ending the week, down 0.97%.
- 2) Bank Nifty too traded sluggish, ending 0.40% lower at 48541 level.
- 3) Nifty Private Bank index dropped 1.05% while Nifty PSU Bank index gained 3.43% on a weekly basis.
- 4) The broader markets were major underperformers as the Nifty Mid-cap 100 index slipped 0.83% while the Nifty Small-cap index inched 0.15% higher.

## **Bullish Sectors:**

Nifty Metal (+3.13%)  
Nifty PSE Index (+2.87%)  
Nifty Energy (+2.79%)  
Nifty Infra Index (+1.71%)  
Nifty Oil & Gas Index (+1.41%)

## **Bearish Sectors:**

Nifty IT (-5.78%)  
Nifty Reality Index (-2.50%)  
Nifty Media (-2.36%)  
Nifty FMCG Index (-2.31%)  
Nifty Pharma (-1.43%)  
Nifty Auto Index (-0.98%)

## **STOCK SPECIFIC NEWS:**

- 1) Life insurance stocks were in rally mode after HDFC Life Insurance's healthy Q3 earnings. HDFC Life zoomed 5.5% higher in the week gone by.
- 2) Railway stocks like IRFC (+7.7%), RVNL (+8.4%) and Ircon (+14.5%) zoomed higher on expectations that the government may increase rail budget by 18% in FY26.
- 3) Reliance Industries gained 2.83% after its Q3 net profit rose 12% to record high of Rs 21,930 crore for the quarter ended December 31, driven by strong performances in its digital services, retail and oils-to-chemicals businesses.
- 4) Axis Bank Q3 tumbled 4.77% after its Q3 results missed streets' estimates as Net profit rose mere 4% YoY to Rs 6,304 crore.
- 5) Infosys tanked 7.7% after the firm reported an 11.4% annual increase in net profit, reaching ₹6,806 crore, for Q3 FY25. Revenue grew by 7.5% to ₹41,764 crore. The company also raised its revenue growth guidance for FY25 to 4.5%-5%.
- 6) Bajaj Finserv slipped 1.21% on media reports that it may break its 25-year-old ties with Allianz in H1CY25, possibly as soon as this March-end.
- 7) HDFC AMC gained 4.84% on reporting a 31% year-on-year (Y-o-Y) growth in net profit to Rs 642 crore for the December quarter (Q3), an 11% rise compared to the September quarter. Revenue from operations surged 39 per cent Y-o-Y to Rs 934 crore during the period.
- 8) Biocon zoomed +9% after USFDA clears Malaysia unit. The US FDA has classified Biocon Biologics' insulin facilities in Johor Bahru, Malaysia, as Voluntary Action Indicated (VAI), paving the way for the company to proceed with product filings from the site.
- 9) Stock prices of REC and PFC jumped 5-7% after JSW Energy emerged as the winning bidder for KSK Mahanadi Power under the Insolvency and Bankruptcy Code. (This news also brings relief to the creditors of KSK Mahanadi Power, which includes state-owned REC and PFC).
- 10) Avenue Supermarts (DMart) shares remained depressed, down 1.76% after the company's December quarter (Q3FY25) results missed Street expectations. The 52-week low of DMart share is Rs 3,400.
- 11) HCL Tech plunged 10% on reporting a net profit for the third quarter (October–December) of FY25 at Rs 4,591 crore. Profits rose 5.5% year-on-year (YoY) and increased 8.4% sequentially. Revenue for the quarter stood at Rs 29,890 crore, up 5% YoY and growing 3.5% sequentially. HCL Technologies has raised the lower end of its FY25 revenue growth guidance to the range of 4.5% to 5%.

## **# In the week gone by, notable gainers amongst Nifty 50 were:**

HINDALCO +7.41%  
NTPC +5.81%  
HDFC LIFE +5.51%  
COAL INDIA +5.20%  
RELIANCE (RIL) +4.87%

## **# And the losers were:**

HCL TECH (-10.34%)  
INFOSYS (-7.7%)  
WIPRO (-6.19%)  
M&M (-5.67%)  
TRENT (-5.58%)



## The Week Ahead: The biggest event of the week is finally here – The Inauguration day!!

All bullish hopes now on Trump's inauguration day!

In Friday's trade, Wall Street already ended higher ahead of the inauguration day. The Street expects banks to be one of the biggest beneficiaries from a second Trump administration. Besides a potentially stronger economy, which would boost profits for lending, investors expect another Trump term to mean less regulation on banks.

On the other hand, there is also some anxiety related to Trump's tariffs plans and also his policies being inflationary in nature. This might be a disappointment for the Fed when it comes to rate cut expectations.

Now, if you are an investor at Dalal Street - you would want the ongoing exhaustion, anxiety and great sadness to quickly shift to joy, rediscovery and optimism.

Actually, the real negative catalyst from last week's trade was that Nifty traded depressed as FIIs shrugged-off the fact that the 'US inflation kettle in the US is off the boil'.

Net-net, FIIs ignored the fact that there is a bright chance that the Federal Reserve could come riding in on a white horse and oblige with a big rate cut at their next policy meeting on January 28-29.

All bullish eyes also turn towards Union Budget 2025 to be released on February 1st Well, Finance Minister Nirmala Sitharaman has the singular responsibility of proving to the big investors across globe that the Prime Minister Narendra Modi's magic is still on. We suspect, expectations are very high, way higher than those in previous budget.

**# Bottom-line:** Lofty valuations at home and concerns over slowing India's corporate earnings growth are big concerns for FIIs camp.

Now, this week, the Q3 earnings season will be in full swing as well where key corporates to announce their results are:

Monday, January 20th: APLAPOLLO, CENTRALBNK, DIXON, IOB, J&KBANK, LTF, MCX, PAYTM, ZOMATO

Tuesday, January 21st: DALBHARAT, ICICIPRULI, INDBNK, INDIACEM, INDIAMART, UCOBANK

Wednesday, January 22nd: BPCL, HDFCBANK, HINDUNILVR, PERSISTENT, PIDILITE, POLYCAB, TATACOMM.

Thursday, January 23rd: ADANIGREEN, DRREDDY, GREAVESCOT, HINDPETRO, IEX, INDUSTOWER, KFINTECH, MPHASIS, THYROCARE, UJJIVANSFB, ULTRACEMCO

Friday, January 24th: AUBANK, BANKINDIA, DCBBANK, DLF, GODREJCP, GRANULES, HINDPETRO, INDIGO, JSWSTEEL, LAURUSLABS, NIITLTD, TORNTPHARM.

Saturday, January 25th: ICICIBANK, IDFCFIRSTB, JKCEMENT.

Technically speaking, Nifty continues to trade way below its 200 DMA which is placed at 23963 mark. The bearish daily technical setup shall exacerbate more pain below psychological 23000. Below Nifty 23000, the next inter-month supports are placed at 21281 mark (June 4th Election day low). Confirmation of strength only on any close above Nifty 23963 mark.

The Nifty options data suggests Nifty is likely to be in a trading range of 22500-24000 zone. Maximum Call OI is at 24000 followed by 25000 strike prices. 24000 mark is still Nifty's major resistance zone on closing basis. Maximum Put open interest stands at 23000 levels followed by 22000 levels. Call writing was seen at 23300 and then at 23500 strike price, while there was meaningful Put writing at 22700 and then at 22600 strike prices.

### # Price Forecast:

<b>Nifty CMP</b>	<b>(23203)</b>
Support:	22901/22651
RESISTANCE:	23597/23800
RANGE:	22922-23555
200 DMA:	23967
Nifty PCR:	0.98
BIAS:	Neutral
<b>Bank Nifty CMP</b>	<b>(48541)</b>
Support:	47800/45880
RESISTANCE:	49445/51000
RANGE:	47900-49322
200 DMA:	50750
BIAS:	Negative

### Preferred trade for the week:

**Nifty (23203):** Buy only above 23400. Targets at 23597/23651. Aggressive targets at 23805-24000. zone. Stop at 22900.

## TOP SECTORS:

# **Bullish Sector:** FMCG, IT, METALS

# **Bearish Sectors:** PVTBANKS, PHARMA, MEDIA

## STOCKS IN FOCUS:

# **BULLISH VIEW:** RELIANCE, NMDC, NATIONALUM, IEX, BEL, HINDPETRO, BPCL, TATASTEEL, POLYCAB, JSWSTEEL, JIOFIN, HINDUNILVR, BSE, CDSL, NSDL, CGPOWER, HAL, MARUTI,

# **BEARISH VIEW:** INFY, FEDERLABNK, KOTAKBANK, HDFCBANK, AXISBANK, AUBANK, M&M, SUPREMIN, ATUL, ULTRACEMCO, SHREECEM, AMBUJACEM.

## NATIONALUM

Incorporated in 1981, **National Aluminium Company Limited (NALCO)**, a 'Navratna' company is one of the country's largest bauxite, alumina, aluminium and power complex. Currently, the Indian government owns 51.28% of NALCO's equity capital. The Company has been operating its captive Panchpatmali Bauxite Mines for the pit head Alumina refinery at Damanjodi, in the District of Koraput in Odisha and Aluminium Smelter & Captive Power Plant at Angul.

The Company has a 68.25 lakh TPA Bauxite Mine & 21.00 lakh TPA (normative capacity) Alumina Refinery located at Damanjodi in Koraput district of Odisha, and 4.60 lakh TPA Aluminium Smelter & 1200MW Captive Power Plant located at Angul, Odisha.

The Company has regional sales offices in Delhi, Kolkata, Mumbai, Chennai and 7 operating stockyards at various locations in the Country to facilitate domestic consumers. In addition, NALCO has its own bulk shipment facility for export of products.

As a part of green initiative, NALCO has installed 198 MW Wind Power Plants at various locations in India and 850 kWp roof top Solar Power Plants at its premises to join hands for carbon neutrality. From the days of first commercial operation in 1987, the Company has continuously earned profits for last 37 years. NALCO is one of the leading foreign exchange earning CPSEs of the Country. The Company continues to retain its position of lowest cost producer in Bauxite and Alumina production in the World.

NALCO posted an impressive 415% growth in net profit for the quarter ended September 2024 at Rs. 1062 crore, compared to Rs. 206 crore achieved during corresponding period of last year. The total income of the company during the quarter from operations stood at Rs.4001 crore, registering 32 percent growth over Q2 of FY 23-24, which was Rs. 3044 crore.

Driven by its corporate plan, the Company is having well carved plans for expansion programs. Presently, the Company is working in major projects like:

1. 5th stream Alumina Refinery, which will enhance the Refinery capacity from 2.1 million tonne to 3.1 million tonne.
2. To support the Alumina Refinery and raw material security, the Company is developing Pottangi bauxite Mines and for which mining leases deed already signed; the mines is expected to be opened shortly. Utkal D & E Coal Mines: Mining activities already started. It is adding to the bottom line by reduction in coal procurement cost. For Utkal-E, all clearances are in advance stage.
3. As part of backward integration, the Company has established a caustic soda plant in JV with Gujarat Alkalies & Chemicals Limited (GACL) in Gujarat. Production already started since 2022.

Technically, the sequence of higher high/low is still intact in all time frames with bullish a probable bullish Piercing pattern rebound on the weekly charts. The momentum oscillators are clearly seen on the buy side signalling further sharp up move —Immediate upside targets are at psychological 250 mark.

The 200-DMA of the stock is around 200 levels and will act as major support.

**Establishing long positions at CMP and on any corrective declines between 185-190 zone should be the preferred trading strategy, targeting 233/251 zone and then aggressive targets seen at 289 zone. Stop below 179. Holding Period: 9-12 Months.**



## BANK NIFTY Index vs NIFTY



- **BANK NIFTY Index: 48,541: UNDERPERFORM.**
- **In Last Week's Trade:** Bank Nifty index drifted lower and the negative takeaway was that Bank Nifty ended below the dotted lines for the 3rd straight week.
- **Relative Strength vs Nifty:** Bank Nifty was mirroring Nifty's sluggish action as the Bank Nifty index ended the week, down 0.40% as against Nifty's 0.98% loss.
- **Bank Nifty 200 DMA:** 50,797 mark.
- **Support:** 47900/46505/45750.
- **Resistance:** 50500/51900/54467.
- **Preferred Strategy on Bank Nifty:** Establish sell positions between 49300-49500 zone, targeting 48300/47900 mark and then aggressive targets at 45750-46505 zone with strict stop at 52001.
- **Preferred Trades:**
  - Sell KOTAK BANK (CMP 1759) between 1775-1790 zone, targeting 1721/1681 zone and then aggressive targets at 1629-1651 zone with stop at 1871. Holding Period: 1-2 months.
  - Sell FEDERAL BANK (CMP 192) between 197-201 zone, targeting 187/181 zone and then aggressive targets at 169-171 zone with stop at 208. Holding Period: 1-2 months.
- **Outperforming Stocks:** ICICI BANK
- **Underperforming Stocks:** AXIS BANK, KOTAK BANK, IDFC FIRST BANK, BANDHAN BANK

**PAIR Strategy: Long ICICI BANK and Short KOTAK BANK.**

## NIFTY IT Index vs NIFTY



- **NIFTY IT Index: 42,032: NEUTRAL**
- **In Last Week's Trade:** Nifty IT index witnessed massive drubbing and the negative takeaway was that Nifty IT index ended on a bearish note.
- **Relative Strength vs Nifty:** Nifty IT index was the major underperformer as against Nifty's sluggish action. Nifty IT index ended the week, 5.78% lower as against Nifty's 0.98% loss.
- **Nifty IT index 200 DMA:** 39543 mark. Biggest support seen at 40000 mark.
- **Support:** 41500/40900/40000.
- **Resistance:** 43500/44750/46301.
- **Preferred Strategy on Nifty IT Index:** Establish sell positions between 42700-43000 zone, targeting 41500/40900 mark and then aggressive targets at 40000-40500 zone with strict stop at 44900.
- **Preferred Trades:**
  - Sell INFY (CMP 1815) between 1875-1890 zone, targeting 1781/1763 zone and then aggressive targets at 1690-1705 zone with stop at 1967. Holding Period: 1-2 months.
  - Sell WIPRO at (CMP 282) between 291-295 zone, targeting 270/264 and then aggressive targets at 245-251 zone with stop at 309. Holding Period: 1-2 months.
- **Outperforming Stocks:** LTTS.
- **Underperforming Stocks:** INFY, WIPRO

**PAIR Strategy: Long LTTS and Short INFY**

## NIFTY PHARMA Index vs NIFTY



- **NIFTY PHARMA Index: 22,062: UNDERPERFORM.**
- **In Last Week's Trade:** Nifty Pharma index drifting down with negative bias.
- **Relative Strength vs Nifty:** Nifty Pharma index was seen underperforming Nifty's depressed action. Nifty Pharma index ended the week, down 1.42% as against Nifty's 0.98% loss.
- **Nifty Pharma index 200 DMA:** 21377 mark. Negative bias as long as 23605 resistance is held.
- **Support:** 21493/21050/20200.
- **Resistance:** 23605/24100/24900.
- **Preferred Strategy on Nifty Pharma Index:** Establish sell positions between 22700-22900 zone, targeting 21493/21050 mark and then aggressive targets at 20200-20600 zone with strict stop at 24313.
- **Preferred Trades:**
  - Buy BIOCON (CMP 394) between 371-380 zone, targeting 409/471 zone and then aggressive targets at 500-511 zone with stop at 333. Holding Period: 1-2 months.
  - Sell GRANNULES at (CMP 579) between 593-597 zone, targeting 557/520 zone and then aggressive targets at 495-510 zone with stop at 623. Holding Period: 1-2 months.
- **Outperforming Stocks:** SUN PHARMA, SYNGENE, BIOCON
- **Underperforming Stocks:** GRANNULES, GLENMARK.

**PAIR Strategy: Long SUN PHARMA and Short GLENMARK**

## NIFTY METAL Index vs NIFTY



- **NIFTY METAL Index: 8,522: OUTPERFORM.**
- **In Last Week's Trade:** Nifty Metal index was seen rebounding sharply after Chinese economy expanded by 5.4% yoy in Q4 2024, accelerating from 4.6% in Q3.
- **Relative Strength vs Nifty:** Nifty Metal index was clearly seen outperforming Nifty's depressed action. Nifty Metal index ended the week, up 3.13% as against Nifty's 0.98% loss.
- **Nifty Metal index 200 DMA:** 9310 mark.
- **Support:** 8301/8151/7751.
- **Resistance:** 8889/9387/10323.
- **Preferred Strategy on Nifty Metal Index:** Establish buy positions at CMP, targeting 8889/9387 mark and then aggressive targets at 9900-10323 zone with strict stop at 7711.
- **Preferred Trades:**
  - Buy JINDAL STEEL at CMP 925, targeting 953/989 zone and then aggressive targets at 1025-1050 zone with stop at 861. Holding Period: 5-8 months.
  - Buy NATIONAL ALUMINUM (CMP 205.50) between 200-203 zone, targeting 221/237 zone and then aggressive targets at 267-275 zone with stop at 183. Holding Period: 9-12 months.
- **Outperforming Stocks:** HINDALCO, JINDAL STEEL, NALCO.
- **Underperforming Stocks:** SAIL, NMDC.

**PAIR Strategy: Long HINDALCO and Short ADANI ENTERPRISES**

Stock	CMP	Support	Resistance	21 DMA	200 DMA	Intraday	Short Term	Long Term
Nifty 50	23203	22739	23667	23608	23967	DOWN	DOWN	DOWN
Bank Nifty	48541	47570	49511	50208	50797	DOWN	DOWN	DOWN
NIFTY PVT BANK	23680	23206	24154	24532	25175	DOWN	DOWN	DOWN
NIFTYOILGAS	10892	10674	11110	10762	11925	UP	DOWN	DOWN
Nifty Energy	34686	33992	35380	34774	40151	UP	DOWN	DOWN
Nifty Fin. Services	22608	22156	23060	23338	23140	DOWN	DOWN	DOWN
Nifty Auto	22791	22335	23247	23041	24308	DOWN	DOWN	DOWN
Nifty FMCG	55801	54685	56917	56505	58663	DOWN	DOWN	DOWN
Nifty IT	42032	41192	42873	43642	39543	DOWN	DOWN	DOWN
Nifty Infra	8401	8233	8569	8418	8879	UP	DOWN	DOWN
Nifty MNC	27363	26816	27910	27885	29468	DOWN	DOWN	DOWN
Nifty Media	1702	1668	1736	1806	1972	DOWN	DOWN	DOWN
Nifty Metal	8522	8351	8692	8572	9310	UP	DOWN	DOWN
Nifty MidCap 50	15140	14837	15442	15692	15609	DOWN	DOWN	DOWN
Nifty PSE	9372	9184	9559	9439	10442	UP	DOWN	DOWN
Nifty PSU Bank	6294	6168	6420	6419	6955	UP	DOWN	DOWN
Nifty Pharma	22062	21620	22503	22743	21377	DOWN	DOWN	DOWN
Nifty Realty	939	920	958	1015	1034	DOWN	DOWN	DOWN
Nifty Smallcap 100	17672	17319	18025	18348	18193	DOWN	DOWN	DOWN
AARTIIND	443	434	452	415	591	UP	UP	DOWN
ABB	6528	6397	6658	6681	7606	UP	DOWN	DOWN
ABBOTINDIA	27930	27371	28488	29022	27957	DOWN	DOWN	UP
ABCAPITAL	177	172	182	180	213	DOWN	DOWN	DOWN
ABFRL	275	266	283	276	301	DOWN	DOWN	DOWN
ACC	2015	1975	2055	2024	2394	UP	DOWN	DOWN
ADANIENSOL	805	789	821	782	977	UP	UP	DOWN
ADANIENT	2400	2352	2448	2443	2945	UP	DOWN	DOWN
ADANIGREEN	1078	1057	1100	1025	1657	UP	UP	UP
ADANIEXPORTS	1164	1140	1187	1176	1371	UP	DOWN	DOWN
ALKEM	5256	5151	5361	5437	5480	DOWN	DOWN	DOWN
AMBUJACEM	536	526	547	536	608	UP	DOWN	DOWN
ANGELONE	2455	2405	2504	2751	2659	DOWN	DOWN	DOWN
APLAPOLLO	1570	1539	1602	1543	1530	UP	DOWN	DOWN
APOLLOHOSP	6828	6692	6965	7155	6656	DOWN	DOWN	DOWN
APOLLOTYRE	453	444	462	501	504	DOWN	DOWN	DOWN
ASHOKLEY	207	200	213	218	224	DOWN	DOWN	DOWN
ASIANPAINT	2261	2216	2306	2285	2851	DOWN	DOWN	DOWN
ASTRAL	1501	1471	1531	1607	1973	DOWN	DOWN	DOWN
ATGL	673	660	687	694	827	DOWN	DOWN	UP
ATUL	6692	6558	6826	6911	7025	DOWN	DOWN	DOWN
AUBANK	598	586	610	567	636	UP	UP	DOWN
AUROPHARMA	1178	1155	1202	1255	1317	DOWN	DOWN	DOWN
AXISBANK	991	971	1011	1064	1162	DOWN	DOWN	DOWN
BAJAJ-AUTO	8581	8410	8753	8777	9739	DOWN	DOWN	DOWN
BAJAJFINSV	1681	1647	1714	1640	1669	UP	UP	UP
BAJFINANCE	7182	7038	7326	7111	7006	DOWN	UP	UP
BALKRISIND	2706	2652	2760	2782	2886	DOWN	DOWN	DOWN
BANDHANBANK	151	147	156	155	187	UP	DOWN	DOWN
BANKBARODA	228	221	235	236	254	DOWN	DOWN	DOWN
BANKINDIA	100	97	103	100	118	UP	DOWN	DOWN
BANKNIFTY	48541	47570	49511	50208	50797	DOWN	DOWN	DOWN
BATAINDIA	1311	1285	1337	1377	1414	DOWN	DOWN	DOWN
BEL	282	274	291	285	285	UP	DOWN	DOWN
BERGEPAIN	469	459	478	454	522	DOWN	DOWN	DOWN
BHARATFORG	1208	1183	1232	1263	1460	DOWN	DOWN	DOWN
BHARTIARTL	1628	1595	1660	1600	1502	UP	UP	DOWN
BHEL	214	208	221	223	270	UP	DOWN	DOWN
BIOCON	394	382	406	365	339	DOWN	UP	UP
BOSCHLTD	31400	30772	32028	33273	33479	DOWN	DOWN	DOWN
BPCL	274	265	282	285	315	DOWN	DOWN	DOWN
BRITANNIA	4854	4757	4951	4817	5399	UP	DOWN	DOWN
BSE	5999	5879	6119	5453	3552	UP	UP	UP
BSOFT	533	522	543	555	627	DOWN	DOWN	DOWN
CAMS	4418	4330	4506	4797	4154	DOWN	DOWN	DOWN
CANBK	98	94	101	98	110	UP	DOWN	DOWN
CANFINHOME	692	678	705	715	816	DOWN	DOWN	DOWN
CDSL	1598	1566	1630	1731	1395	DOWN	DOWN	DOWN
CEC	153	148	157	175	171	DOWN	DOWN	DOWN
CGPOWER	649	636	662	701	692	DOWN	DOWN	DOWN
CHAMBLFERT	501	491	511	496	475	UP	DOWN	DOWN
CHOLAFIN	1257	1232	1283	1238	1344	DOWN	UP	DOWN
CIIPLA	1442	1413	1471	1487	1515	DOWN	DOWN	UP
COALINDIA	388	376	399	381	464	UP	DOWN	DOWN
COFORGE	8642	8469	8814	9333	6719	DOWN	DOWN	DOWN
COLPAL	2684	2630	2737	2746	3065	DOWN	UP	DOWN
CONCOR	772	757	788	770	936	UP	DOWN	DOWN
COROMANDEL	1875	1837	1912	1886	1583	DOWN	DOWN	UP
CROMPTON	362	351	373	376	399	DOWN	DOWN	DOWN
CUB	172	167	177	172	164	UP	DOWN	DOWN
CUMMINSIND	2935	2877	2994	3164	3566	DOWN	DOWN	DOWN
CYIENT	1755	1720	1790	1820	1874	DOWN	DOWN	DOWN
DABUR	526	516	537	512	571	UP	DOWN	DOWN
DALBHARAT	1722	1688	1756	1765	1837	DOWN	DOWN	DOWN
DEEPAKNT	2359	2312	2406	2476	2643	DOWN	DOWN	DOWN
DELHIVERY	339	328	349	342	396	UP	DOWN	DOWN
DIVISLAB	5916	5798	6034	5913	5046	DOWN	DOWN	UP
DIXON	17224	16880	17569	17580	12848	UP	DOWN	DOWN
DLF	749	734	764	800	842	DOWN	DOWN	DOWN
DMART	3621	3548	3693	3626	4496	DOWN	DOWN	UP
DRREDDY	1309	1283	1336	1352	1286	DOWN	UP	UP
EICHERMOT	5012	4912	5113	4991	4772	DOWN	UP	UP
ESCORTS	3601	3529	3673	3331	3706	UP	UP	UP
EXIDEIND	390	378	401	408	476	DOWN	DOWN	DOWN
FEDERALBNK	192	186	197	197	187	UP	DOWN	DOWN
FINNIFTY	22608	22156	23060	23338	23140	DOWN	DOWN	DOWN
GAIL	181	176	186	187	211	DOWN	DOWN	DOWN
GLENMARK	1468	1439	1497	1564	1433	DOWN	DOWN	DOWN
GMRINFRA	76	73	79	77	87	UP	DOWN	DOWN
GNFC	563	552	574	561	650	UP	DOWN	DOWN
GODREJCP	1188	1164	1212	1116	1312	UP	UP	UP
GODREJPROP	2408	2359	2456	2646	2880	DOWN	DOWN	DOWN
GRANULES	579	568	591	593	542	DOWN	DOWN	DOWN
GRASIM	2376	2328	2423	2437	2571	DOWN	DOWN	DOWN
GUJGASLTD	500	490	510	499	569	UP	DOWN	DOWN
HAL	4117	4034	4199	4109	4504	UP	DOWN	DOWN
HAVELLS	1574	1543	1606	1633	1777	DOWN	DOWN	DOWN
HCLTECH	1789	1753	1825	1907	1666	DOWN	DOWN	DOWN
HDFCAMC	4031	3950	4111	4128	4144	UP	DOWN	DOWN
HDFCBANK	1637	1604	1669	1728	1653	DOWN	DOWN	DOWN
HDFCLIFE	642	629	655	618	650	UP	UP	DOWN
HEROMOTOCO	4098	4016	4180	4194	5070	DOWN	DOWN	DOWN
HFL	104	101	107	108	121	UP	DOWN	DOWN
HINDALCO	617	605	629	601	662	UP	UP	DOWN
HINDCOPPER	248	240	255	247	316	UP	DOWN	DOWN
HINDPETRO	359	348	370	394	375	DOWN	DOWN	DOWN
HINDUNILVR	2354	2307	2401	2369	2542	DOWN	UP	DOWN
HUDCO	235	228	242	231	249	UP	DOWN	DOWN
ICICIBANK	1225	1201	1250	1271	1215	DOWN	DOWN	DOWN
ICICIGI	1949	1910	1988	1859	1887	UP	UP	DOWN
ICICIPRULI	646	633	659	654	671	DOWN	DOWN	DOWN
IDEA	9	9	9	8	12	UP	UP	UP
IDFCFIRSTB	63	60	65	63	73	UP	DOWN	DOWN
IEX	173	168	178	175	178	UP	DOWN	DOWN
IGL	405	397	413	408	469	DOWN	UP	UP
INDHOTEL	813	797	830	843	674	UP	DOWN	DOWN
INDIAMART	2283	2237	2328	2267	2644	DOWN	DOWN	DOWN
INDIANB	524	514	535	521	544	UP	UP	DOWN
INDIGO	4090	4008	4172	4364	4319	DOWN	DOWN	DOWN
INDUSINDBK	971	952	990	962	1310	DOWN	DOWN	DOWN
INDUSTOWER	363	352	374	338	368	UP	UP	UP
INFY	1815	1779	1852	1923	1744	DOWN	DOWN	DOWN
IOC	128	124	132	134	160	DOWN	DOWN	DOWN
IPCALAB	1543	1512	1574	1637	1407	DOWN	DOWN	UP
IRB	55	53	57	56	62	UP	DOWN	DOWN
IRCTC	779	764	795	778	926	DOWN	DOWN	DOWN
IRFC	146	142	151	145	163	UP	DOWN	DOWN
ITC	440	431	449	460	467	DOWN	DOWN	DOWN
JINDALSTEL	925	906	943	928	965	DOWN	DOWN	DOWN
JIOFIN	279	271	287	295	338	DOWN	DOWN	DOWN
JKCEMENT	4541	4450	4632	4595	4331	DOWN	DOWN	UP
JSL	634	622	647	675	729	DOWN	DOWN	DOWN
JSWENERGY	568	557	579	608	670	UP	DOWN	DOWN
JSWSTEEL	909	890	927	909	931	DOWN	DOWN	DOWN
JUBLFOOD	693	679	707	719	595	DOWN	DOWN	UP
KALYANKJIL	502	491	512	687	581	DOWN	DOWN	DOWN
KEI	4105	4023	4187	4242	4229	DOWN	DOWN	DOWN
KOTAKBANK	1759	1723	1794	1772	1772	UP	UP	DOWN
KPITTECH	1315	1288	1341	1422	1578	DOWN	DOWN	DOWN
LALPATHLAB	2810	2754	2866	2942	2946	DOWN	DOWN	DOWN
LAURUSLABS	568	556	579	585	478	DOWN	DOWN	UP
LICHSGFIN	563	551	574	580	661	DOWN	DOWN	DOWN
LICI	855	838	872	874	987	UP	DOWN	DOWN
LODHA	1177	1153	1200	1327	1294	DOWN	DOWN	DOWN
LT	3569	3497	3640	3595	3615	DOWN	DOWN	DOWN
LTF	143	139	147	139	162	UP	DOWN	DOWN
LTIM	5890	5772	6008	5816	5614	DOWN	DOWN	DOWN
LTTS	5374	5266	5481	4854	5104	UP	UP	UP
LUPIN	2113	2071	2155	2234	1950	DOWN	DOWN	DOWN
M&M	2917	2859	2976	3034	2758	DOWN	DOWN	UP
M&MFIN	269	260	277	270	288	DOWN	DOWN	DOWN
MANAPPURAM	194	188	200	184	188	UP	UP	UP
MARICO	664	651	678	649	629	UP	UP	UP
MARUTI	12136	11894	12379	11428	12151	UP	UP	UP
MAXHE								



# WEEKLY PIVOT TABLE (Commodities)

Monday  
20th January, 2025

Stock	CMP	Support	Resistance	21 DMA	200 DMA	Intraday	Short Term	Long Term
ALUMINIUM 1	256	248	264	246	235	UP	UP	UP
COPPER 1	833	816	849	811	829	UP	UP	UP
CRUDEOIL 1	6774	6639	6909	6330	6325	UP	UP	UP
GOLD 1	79023	77443	80603	77383	73692	UP	UP	UP
LEAD 1	178	172	183	177	185	DOWN	UP	DOWN
NATURALGAS 1	345	334	355	322	221	UP	UP	UP
NICKEL	1587	1556	1619	1634	1950	DOWN	DOWN	DOWN
SILVER 1	91602	89770	93434	89914	88057	UP	UP	UP
STEEL 1	556	545	567	42125	44492	DOWN	DOWN	DOWN
ZINC 1	278	269	286	277	270	DOWN	UP	DOWN
CASTOR 1	6421	6293	6549	6367	6182	UP	UP	DOWN
DHANIYA 1	7446	7297	7595	7779	7368	DOWN	DOWN	DOWN
GUARGUM5 1	10633	10420	10846	10358	10538	UP	UP	UP
GUARSEED10 1	5514	5404	5624	5334	5351	UP	UP	UP
JEERAUNJHA 1	22190	21746	22634	23932	25882	DOWN	DOWN	DOWN
MENTHAOIL 1	927	908	945	933	932	UP	DOWN	UP
-	-	-	-	-	-	-	-	-
-	-	-	-	-	-	-	-	-
-	-	-	-	-	-	-	-	-



## Share India Securities Limited

### Corporate Office

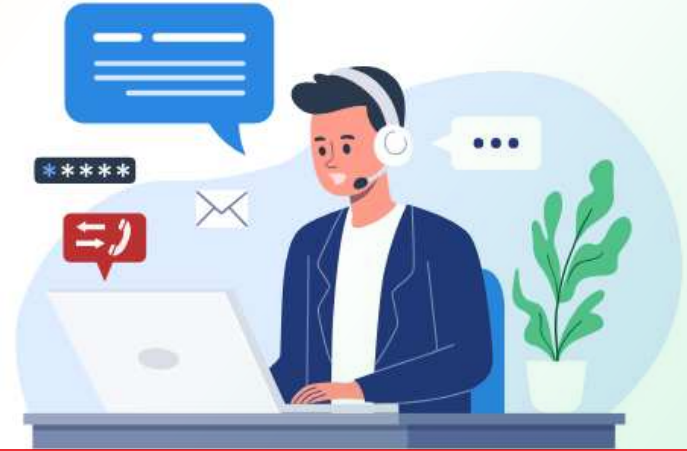
Share India Securities Limited  
A-15, Sector-64, Noida-201301  
Contact No. : 1800 203 0303

**Call Us:** 1800 203 0303

**Email:** support@shareindia.com

### Registered Office

Unit No. 615 and 616, 6th Floor, X-Change Plaza,  
Dalal Street Commercial Co-operative Society Limited,  
Road 5 E, Block 53, Zone 5, Gift City, Gandhi Nagar,  
Gujarat-382 355



### Disclosures and Disclaimers:

This report has been prepared by Share India Securities Limited (here in after referred to as SISL) in the capacity of a Research Analyst registered with SEBI and distributed as per SEBI (Research Analysts) Regulations 2014. This report is prepared and distributed by Research Analysts employed by SISL for information purposes only, and neither the information contained herein, nor any opinion expressed should be construed or deemed to be construed as solicitation or as offering advice for the purposes of the purchase or sale of any security, investment, or derivatives. The information and opinions contained in the report were considered by SISL to be valid when published. The report also contains information provided to SISL by third parties. Whilst SISL has taken all reasonable steps to ensure that all the information in the report is correct, SISL does not offer any warranty as to the accuracy or completeness of such information. Any person placing reliance on the report does so entirely at his or her own risk and SISL does not accept any liability as a result. Securities markets may be subject to rapid and unexpected price movements and past performance is not necessarily an indication of future performance. Investors must undertake independent analysis with their own legal, tax, and financial advisors and reach their own conclusions regarding investment in securities market and should understand that. Under no circumstances can it be used or considered as an offer to sell or as a solicitation of any offer to buy or sell the securities mentioned within it. The information contained in the research reports may have been taken from trade and statistical services and other sources, which SISL believe is reliable. SISL or any of its group/associate/affiliate companies do not guarantee that such information is accurate or complete and it should not be relied upon as such. Any information provided in the report reflect analysis at this date and are subject to change without notice. SISL submits that no material disciplinary action has been taken on SISL by any regulatory authority impacting Research Analysis activities.

SISL is a Member of National Stock Exchange of India Limited (NSE), BSE Ltd (Bombay Stock Exchange), Multi Commodity Exchange of India Limited (MCX), National Commodity and Derivatives Exchange Limited (NCDEX), and has Depository Participant affiliation with Central Depositories Services (India) Limited (CDSL). It is a SEBI registered Portfolio Manager and SEBI registered Research Analyst [SEBI Reg. No.: INB/F/E 231079832, INB/F/E 011079838, IN-DP-32-2015, AMFI Reg. No. ARN: 78041, SEBI Research Analyst Reg. No.: INH100005011, CIN -L67120GJ1994PLC115132].

Certifications: The Research Analyst(s), Girish Kumar, who prepared this research report hereby certifies

that the views expressed in this research report accurately reflect the research analyst's personal views about all of the subject issuers and/or securities, that the analyst(s) have no known conflict of interest and no part of the research analyst's compensation was, is, or will be, directly or indirectly, related to the Specific views or recommendations contained in this research report.

### Additional Disclosures of Interest:

1. The Research Analyst, SISL, or its associates or relatives of the research analyst does not have any Financial interest in the company(ies) covered in this report.
2. The Research Analyst, SISL or its associates or relatives of the research analyst affiliates do not Hold more than 1% of the securities of the company (ies) covered in this report as of the end of the month immediately preceding the distribution of the research report.

3. The Research Analyst, his/her associate, his/her relative, and SISL, do not have any other material conflict of interest at the time of publication of this research report.
4. The Research Analyst, SISL, and its associates have not received compensation for brokerage Services, investment banking, merchant banking or for any other products or services from the Company(ies) covered in this report, in the past twelve months.
5. The Research Analyst, SISL or as associates have not managed or co-managed, in the previous twelve months, a private or public offering of securities for the company (ies) covered in this report.
6. The Research Analyst, SISL or its associates have not received compensation or other benefits from the company(ies) covered in this report or from any third party, in connection with the research report.
7. The Research Analyst has not served as an Officer, Director, or employee of the company (ies) covered in the Research report.
8. The Research Analyst and SISL has not been engaged in market making activity for the company(ies) covered in the Research report.

**Suitability and Risks.** This research report is for informational purposes only and is not tailored to the specific investment objectives, financial situation or particular requirements of any individual Recipient hereof. Certain securities may give rise to substantial risks and may not be suitable for certain investors. Each investor must make its own determination as to the appropriateness of any Securities referred to in this research report based upon the legal, tax and accounting considerations Applicable to such investor and its own investment objectives or strategy, its financial situation and its Investing experience. The value of any security may be positively or adversely affected by changes in Foreign exchange or interest rates, as well as by other financial, economic, or political factors.

**Sources, Completeness and Accuracy:** The material herein is based upon information obtained from sources that SISL and the research analyst believe to be reliable, but neither SISL nor the research analyst represents or guarantees that the information contained herein is accurate or complete and it should not be relied upon as such. Opinions expressed herein are current opinions as of the date appearing on this material and are subject to change without notice. Furthermore, SISL is under no obligation to update or keep the information current. Without limiting any of the foregoing, in no event shall SISL, any of its affiliates/employees or any third party involved in or related to computing or compiling the information have any liability for any damages of any kind including but not limited to any direct or consequential loss or damage, however arising, from the use of this report.

**Copyright:** The copyright in this research report belongs exclusively to SISL. All rights are reserved. Any unauthorised use or disclosure is prohibited. No reprinting or reproduction, in whole or in part, is permitted without the SISL's prior consent, except that a recipient may reprint it for internal circulation only and only if it is reprinted in its entirety.

**Caution:** Risk of loss in trading/investment can be substantial and even more than the amount / margin given by you. Investment in securities market are subject to market risks, you are requested to read all the related documents carefully before investing. You should carefully consider whether trading investment is appropriate for you in light of your experience, objectives, financial resources and other relevant circumstances. SISL and any of its employees, directors, associates, group entities, or affiliates shall not be liable for losses, if any, incurred by you. You are further cautioned that trading/investments in financial markets are subject to market risks and are advised to seek independent third-party trading/investment advice outside SISL/group/associates/affiliates/directors/employees before and during your trading/investment. There is no guarantee/assurance as to returns or profits or capital protection or appreciation. SISL and any of its employees, directors, associates, and/ or employees, directors, associates of SISL's group entities or affiliates is not inducing you for trading investing in the financial market(s). Trading/Investment decision is your sole responsibility. You must also read the Risk Disclosure Document and Do's and Don'ts before investing.

This report is not directed or intended for distribution to, or use by, any person or entity who is a citizen or resident of or located in any locality, state, country or other jurisdiction, where such distribution, publication, availability or use would be contrary to law, regulation or which would subject SISL and affiliates to any registration or licensing requirement within such jurisdiction. The Profits or capital protection or appreciation. SISL and any of its employees, directors, associates, and/or employees, directors, associates of SISL's group entities or affiliates is not inducing you for Trading/investing in the financial market(s). Trading/Investment decision is your sole responsibility.

You must also read the Risk Disclosure Document and Do's and Don'ts before investing.

This report is not directed or intended for distribution to, or use by, any person or entity who is a citizen or resident of or located in any locality, state, country or other jurisdiction, where such distribution, publication, availability or use would be contrary to law, regulation or which would subject SISL and affiliates to any registration or licensing requirement within such jurisdiction. The securities described herein may or may not be eligible for sale in all jurisdictions or to certain category of investors. Persons in whose possession this document may come are required to inform themselves off and to observe such restriction. For Detailed Disclaimer, please visit our website [www.shareindia.com](http://www.shareindia.com).